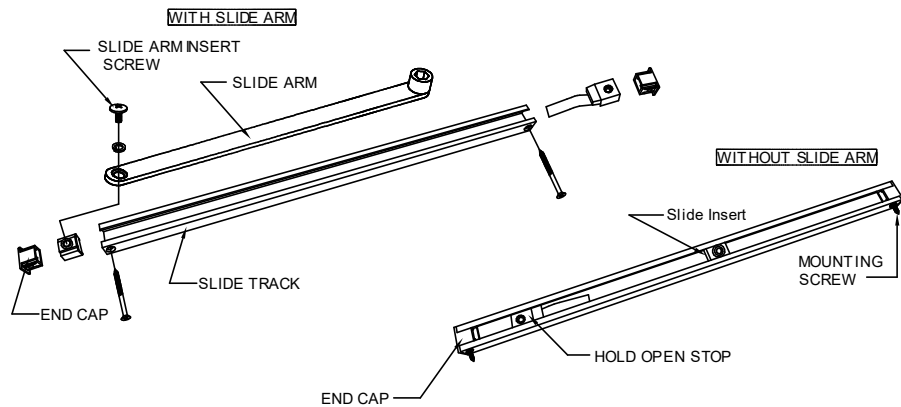


TDC40-T TRACK ARM INSTALLATION INSTRUCTIONS

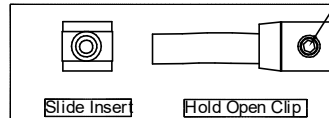
PARTS



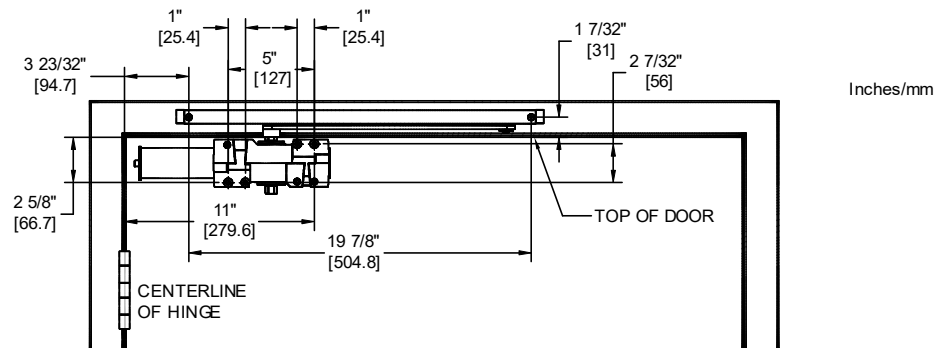
POWER ADJUSTMENT CHART

SIZE	MAX. DOOR WIDTH		ADJUSTING CYCLES
	EXTERIOR DOOR	INTERIOR DOOR	
1	---	---	-5 TURNS
2	8.5lb-#	34" [864]	-3 TURNS
3	30" [762]	38" [962]	0 TURNS
4	36" [914]	48" [1219]	15 TURNS C.W.

ADJUSTMENT SCREW



INSTALL TRACK ARM - PULL SIDE MOUNTING APPLICATION (RIGHT HAND SHOWN) 120° TEMPLATE

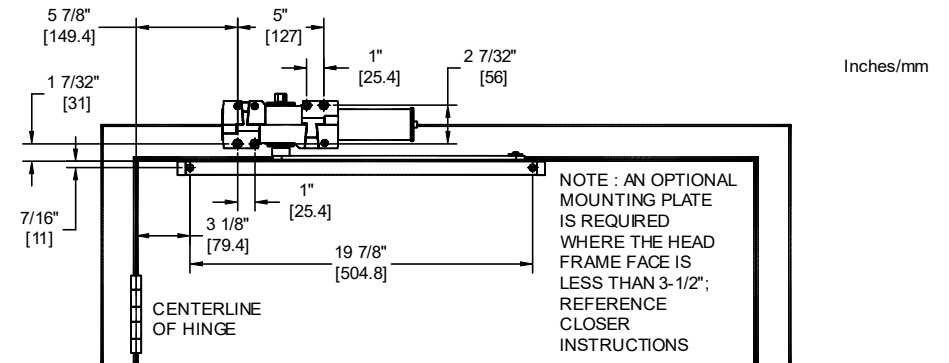


Installation Sequence:

1. Use template above to locate mounting holes on door and frame. Drill 1/8" pilot holes for the self tapping screws.
2. Determine door width, adjust spring power of closer by referencing above listed power adjustment chart.
3. Fasten slide track to frame face with power adjustment nut away from hinge.
4. Fasten slide track to door face with open side facing down and with hold open stop end toward hinge edge of door.
5. Place arm to closer at pre-load position of 30° from door frame.
6. Secure arm with arm washer and arm screw.
7. Push arm towards door to pretension closer then secure other end of slide arm to track by screwing it to the slide insert. Open door to required opening angle. Then slide stop only/hold open stop up against slider insert and tighten down the stop only/hold open stop via set screw.

TDC40-T TRACK ARM INSTALLATION INSTRUCTIONS

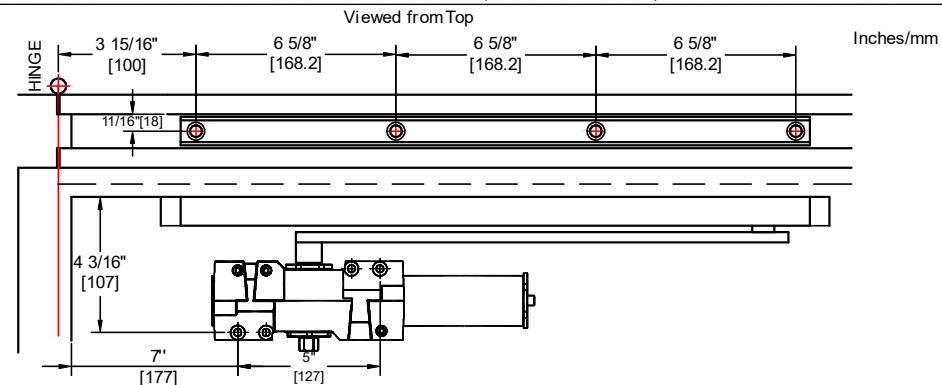
INSTALL TRACK ARM - PULL SIDE (TOP JAMB) MOUNTING APPLICATION (RIGHT HAND SHOWN) 120°



Installation Sequence:

1. Use template to locate holes on door and frame. Drill 1/8" pilot holes for the self tapping screws.
2. Determine door width, adjust spring power of closer by referencing power adjustment chart.
3. Fasten closer body to frame with power adjustment nut away from hinge.
4. Fasten slide track to door face with open side facing up and with hold open stop end toward hinge edge of door.
5. Place arm to closer at pre-load position of 30° from door frame.
6. Secure arm with arm washer and arm screw.
7. Secure other end of slide arm to track by screwing it to the slide insert. Open door to required opening angle. Then slide stop only/hold open stop up against slider insert and tighten down the stop only/hold open stop via set screw.

INSTALL TRACK ARM - PUSH SIDE APPLICATION MOUNTING (LEFT HAND SHOWN) 90°



Installation Sequence:

1. Use template above to locate mounting holes on pocket wall and mount closer according to pull side application template. Drill 1/8" pilot holes for the self tapping screws.
2. Determine door width, adjust spring power of closer by referencing power adjustment chart.
3. Fasten closer body to door with power adjustment nut away from hinge.
4. Fasten slide track to pocket wall face with open side facing down and with hold open stop end away from hinge edge of door.
5. Place arm to closer at pre-load position of 30° from door frame.
6. Secure arm with arm washer and arm screw.
7. Push arm towards door to pretension closer then secure other end of slide arm to track by screwing it to the slide insert. Open door to required opening angle. Then slide stop only/hold open stop up against slider insert and tighten down the stop only/hold open stop via set screw.