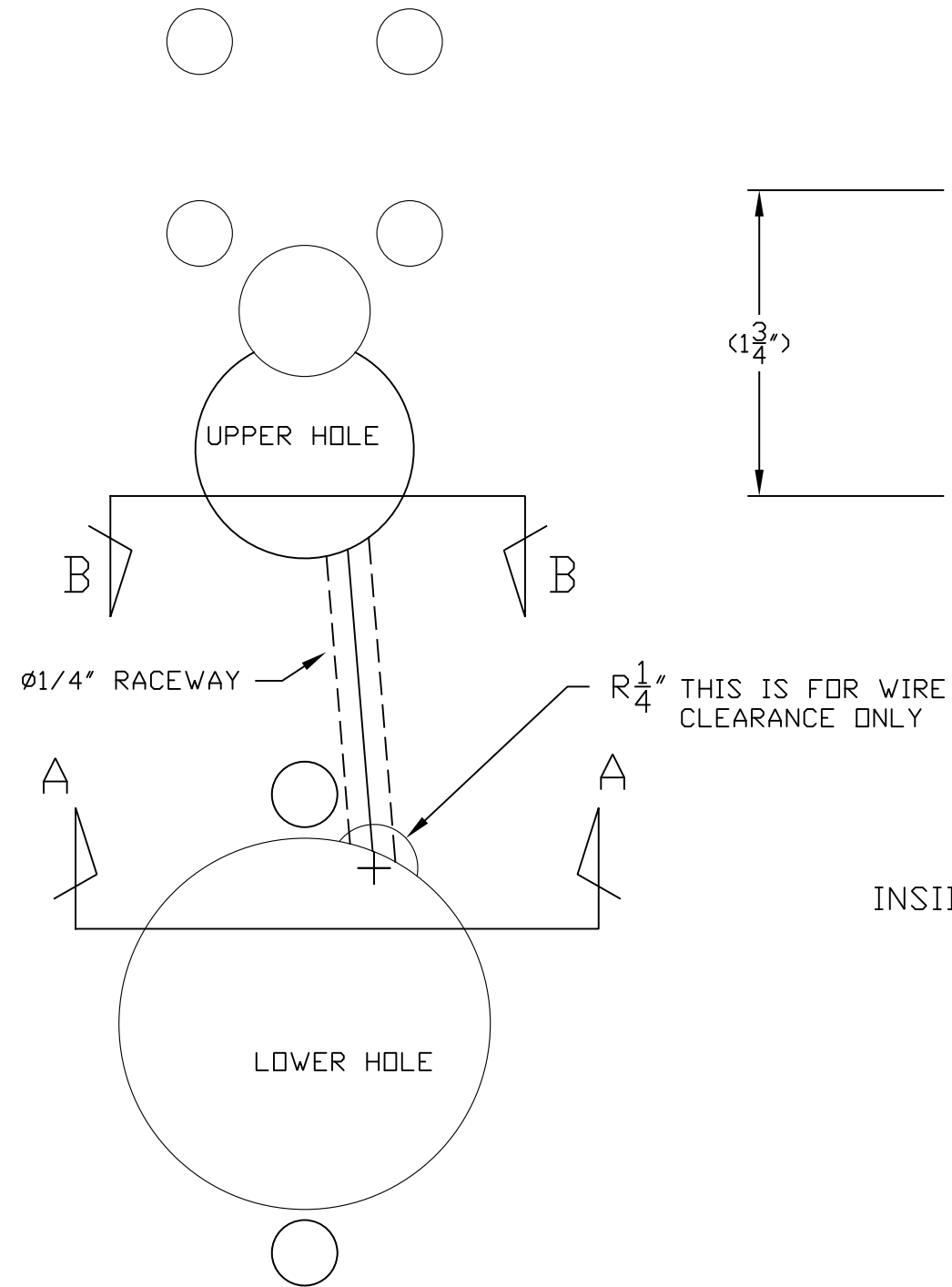
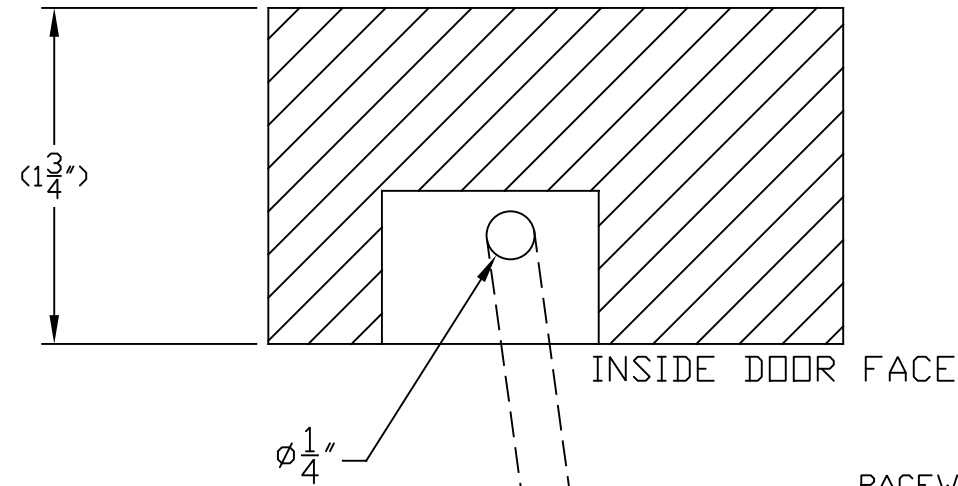


XTRXL TEMPLATE RIGHT HAND

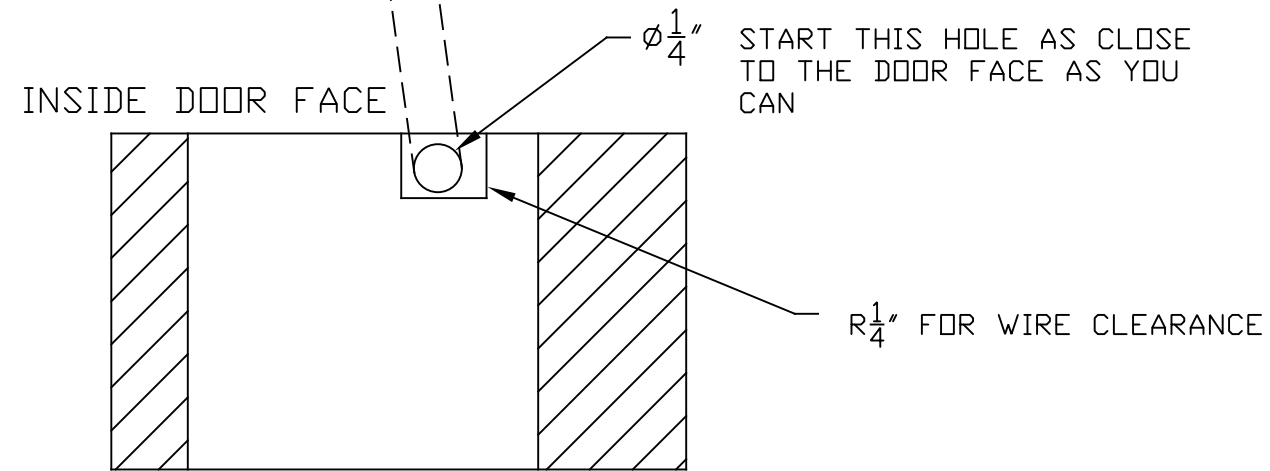
INSIDE RIGHT HAND RACEWAY DETAIL



SECTION B-B



RACEWAY- JUST NEED TO CONNECT LOWER AND UPPER HOLES, ANGLE NOT IMPORTANT.



SECTION A-A

DRILLING THE RACEWAY:

The raceway is $\phi 1/4"$, can be larger if needed. It is not seen on the face of the door. Drill bit should be 6" or more in length so you can create as much angle as possible to connect the upper and lower holes. Start at the lower hole and drill with the drill motor as close to the face of the door as possible. Drill to connect the holes. Angle doesn't matter as long as it goes from 1 hole to the other.