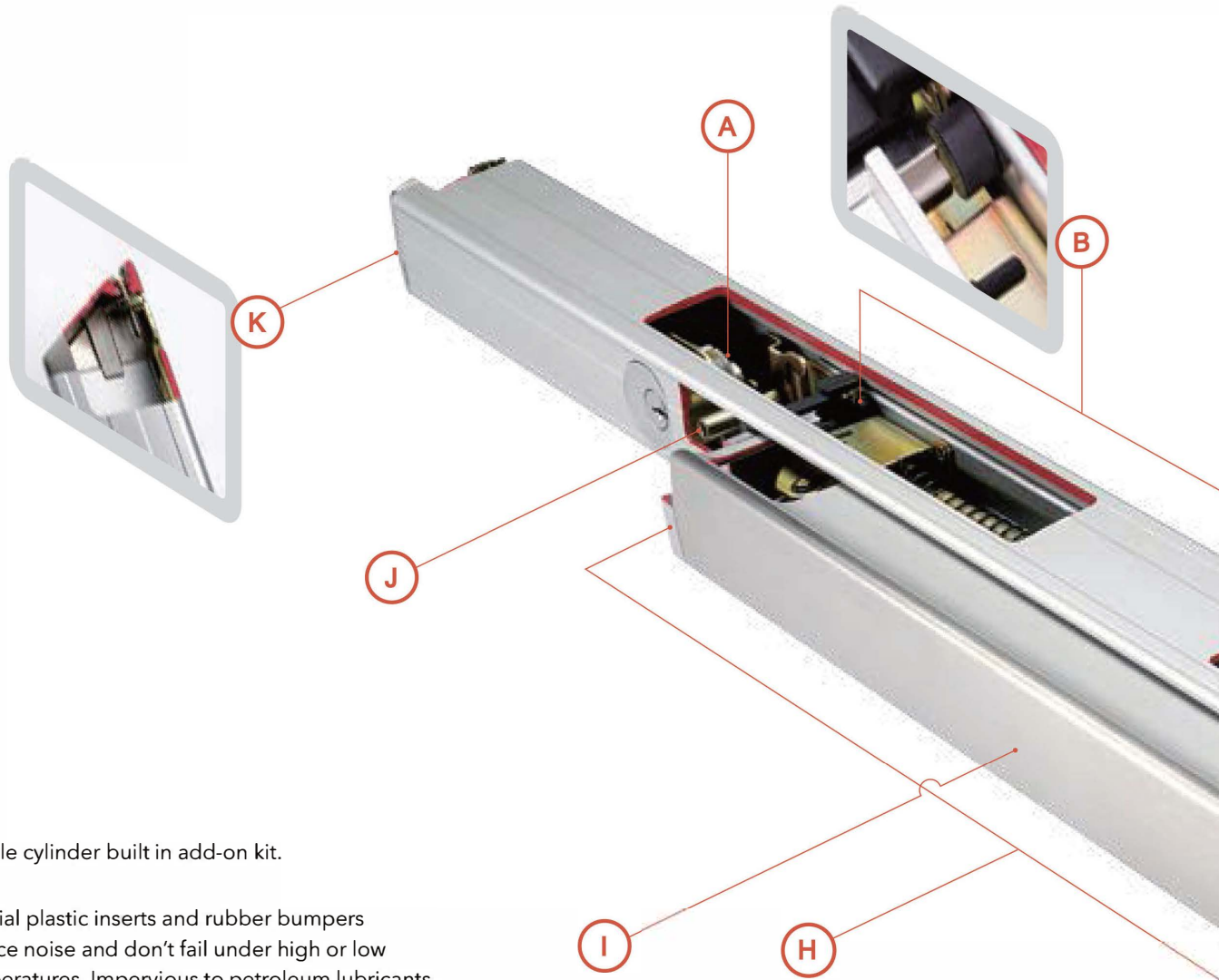


Features



A Simple cylinder built in add-on kit.

B Special plastic inserts and rubber bumpers reduce noise and don't fail under high or low temperatures. Impervious to petroleum lubricants.

C Detachable center case allows switching between mechanical and electrical options which replaces the need of buying two complete sets.

D Replaceable cam breaks at predetermined load to prevent further damage of the trim mechanism. Handing change is simple and easy, just remove screw and cam from mechanism and rotate lever to desired position, then replace cam and fasten the screw.

E Stainless steel latch and deadlatching blade add perceived value.

F Center Case with maximum versatility, Surface and Concealed Vertical Rods can be adjusted inside the center case with an ingenious rod holder design.

G Double Cylinder devices are used as classroom intruder locks, allowing the teacher to lock the outside trim without opening the door.

H Integrated End Cap and pivot add push pad stability and make the bar move smoothly regardless of where the pressure is applied on push bad.

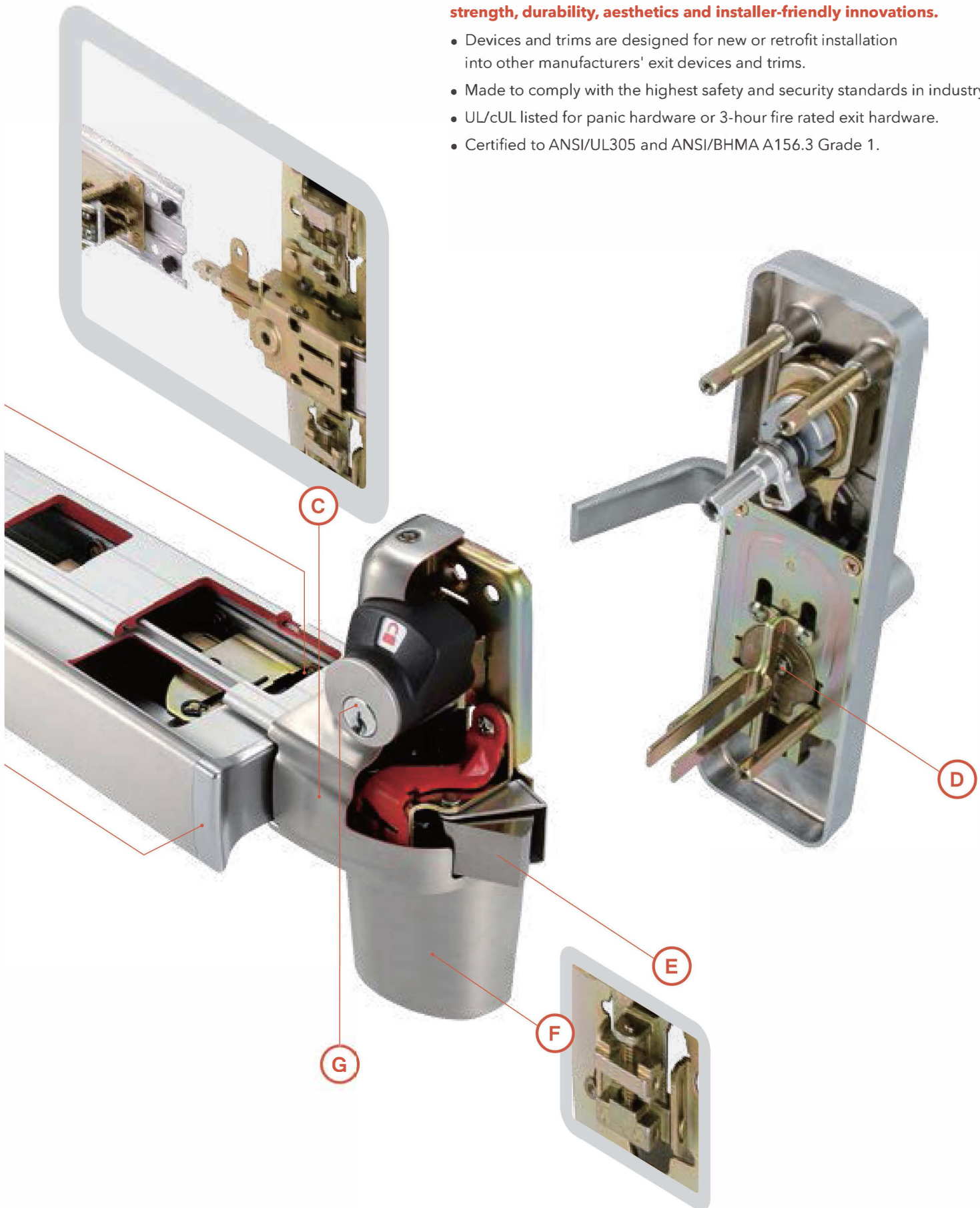
I Push Bar is smoothly surfaced. Reduced projection minimizes catch hazard.

J Dogging can be done with an allen wrench, a small flat key or a flat blade screwdriver.

K Flush End Cap design.

The 1000 Series Exit Devices are fabricated and blended with simplicity, strength, durability, aesthetics and installer-friendly innovations.

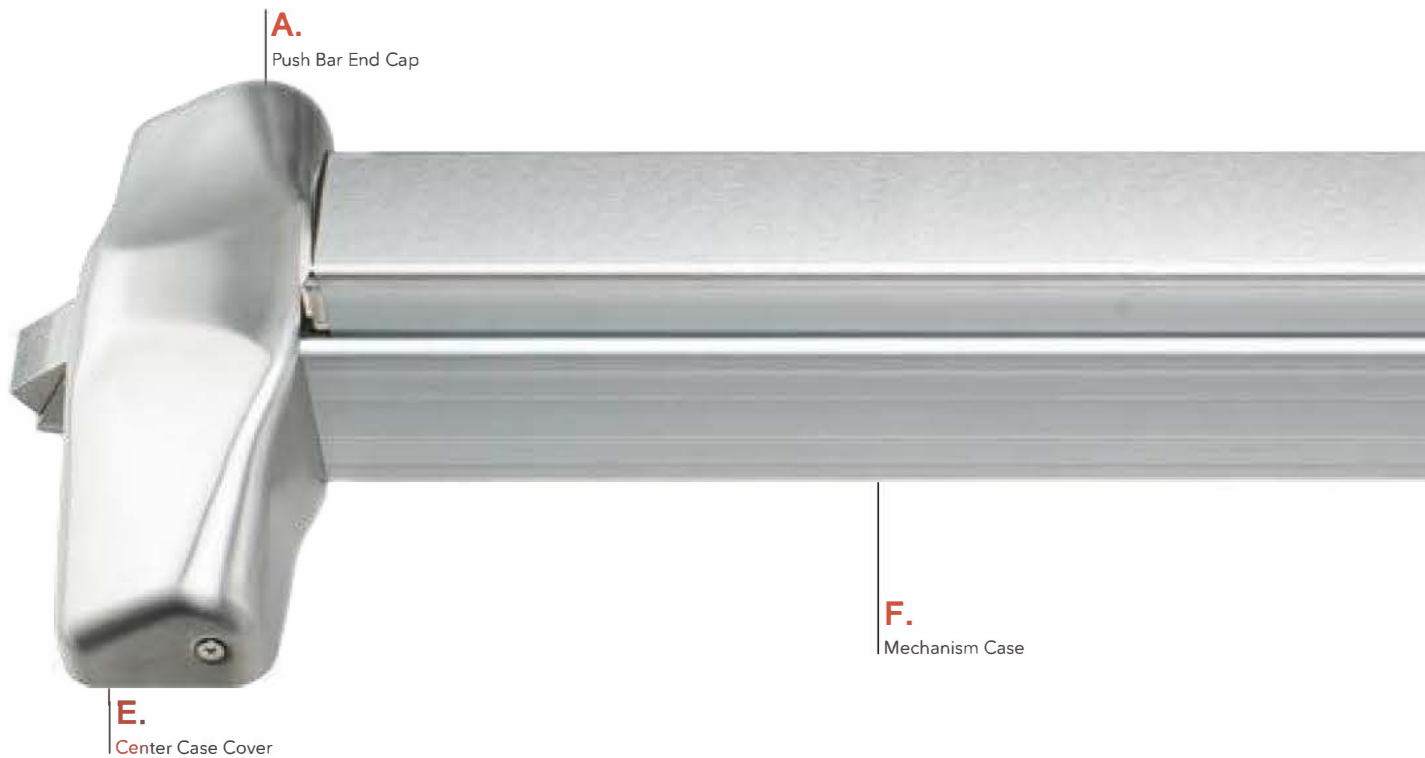
- Devices and trims are designed for new or retrofit installation into other manufacturers' exit devices and trims.
- Made to comply with the highest safety and security standards in industry.
- UL/cUL listed for panic hardware or 3-hour fire rated exit hardware.
- Certified to ANSI/UL305 and ANSI/BHMA A156.3 Grade 1.



General Overview

Device Material

1000 Series is furnished standard with grooved case. Smooth surface style is available. The two styles are mechanically and dimensionally identical and come with a wide selection of finishes.



Finishes

COLOR	ANSI/BHMA	US	B.E.G.	A.D.	C.F.H.
Polished Brass	605	3	Brass, Polished	Plated	Buffed Anodized
Satin Brass	606	4	Brass, Satin	Plated	Anodized
Polished Bronze	611	9	Bronze, Polished	Plated	Buffed Anodized
Satin Bronze	612	10	Bronze, Satin	Plated	Anodized
Dark Oxidized Satin Bronze	613	10B	Bronze, Satin; Dark Oxidized	Plated	Anodized
Polished Chrome	625	26	Brass, Polished & Plated	Plated	Buffed Anodized
Satin Chrome	626	26D	Brass, Satin & Plated	Plated	Anodized
Satin Stainless Steel	630	32D	St. Steel, Satin	Plated	Anodized

Other finishes consult factory.

Push Bar Trim Options:

- Embossed "PUSH"
- Braille, embossed "CAUTION STAIRWELL"
- Red silk screen lettered "EMERGENCY EXIT ONLY - PUSH TO OPEN & SOUND ALARM"

Mechanism Case Options



Smooth



Grooved

B.
Push Bar Trim

C.
Cover Plate



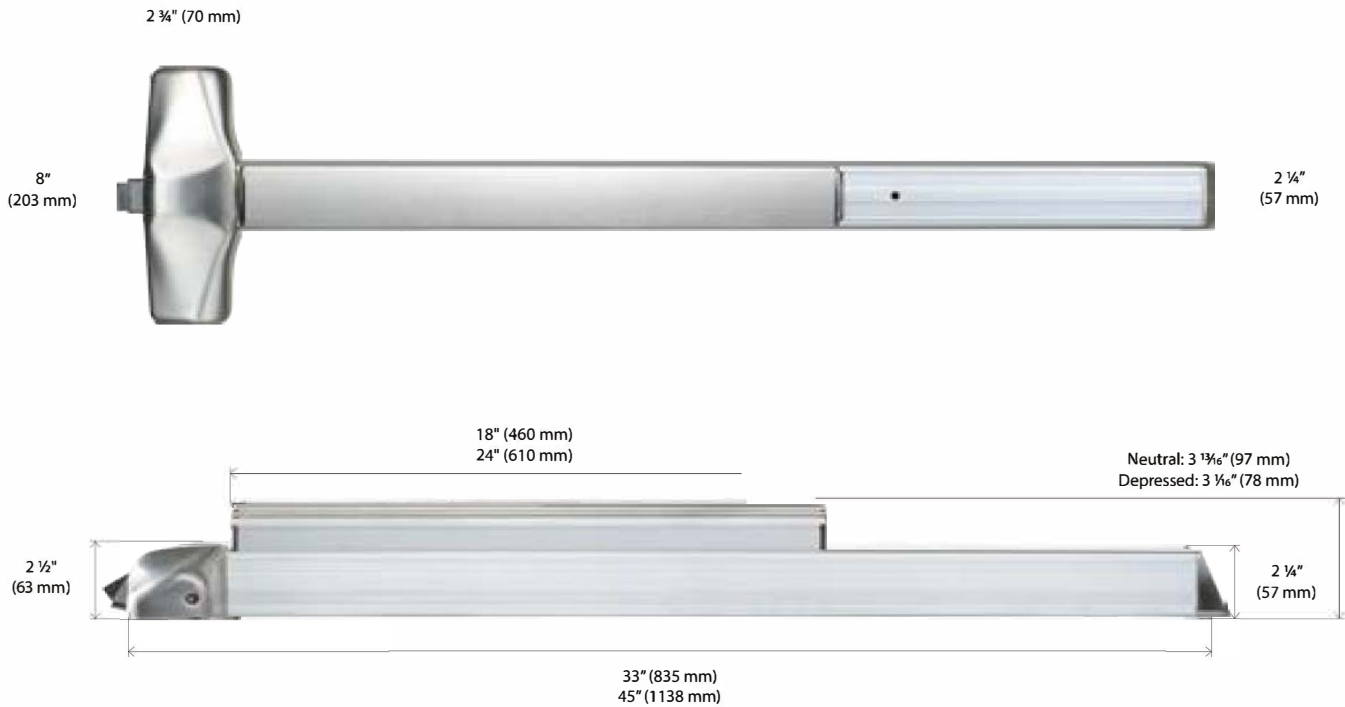
Optional for 1200,1500 (Not Shown)

G. Latch Cover for Surface Vertical Rods

H. Vertical Rods

D.
Mechanism End Cap

Dimensions



Fasteners/Sex bolts (SNB)



	Devices No.	Specification	Qty.
Without Trim	1100	1024 SNB (No.10-24)	8
	1200	1024 SNB (No.10-24)	6
		4120 SNB (No.1/4-20)	4
	1300/1400	1024 SNB (No.10-24)	6
	1500	1024 SNB (No.10-24)	8
		4120 SNB (No.1/4-20)	4
With Trim	1100	1024 SNB (No.10-24)	2
	1200	1024 SNB (No.10-24)	2
		4120 SNB (No.1/4-20)	4
	1300/1400	1024 SNB (No.10-24)	2
	1500	1024 SNB (No.10-24)	2
		4120 SNB (No.1/4-20)	4

Furnished standard with machine screws. Specify sheet metal screws or wood screws when/if required. Specify Sex Bolts (SNB) where recommended or required by the door manufacturer.

Sex Nuts and Bolts (SNB) are furnished with 1024 SNB (No.10-24) for Device or 4120 SNB (No. 1/4-20) for Top Rod Latch and Bottom Rod Latch.

ED1300 / ED1300F Concealed Vertical Rod Devices

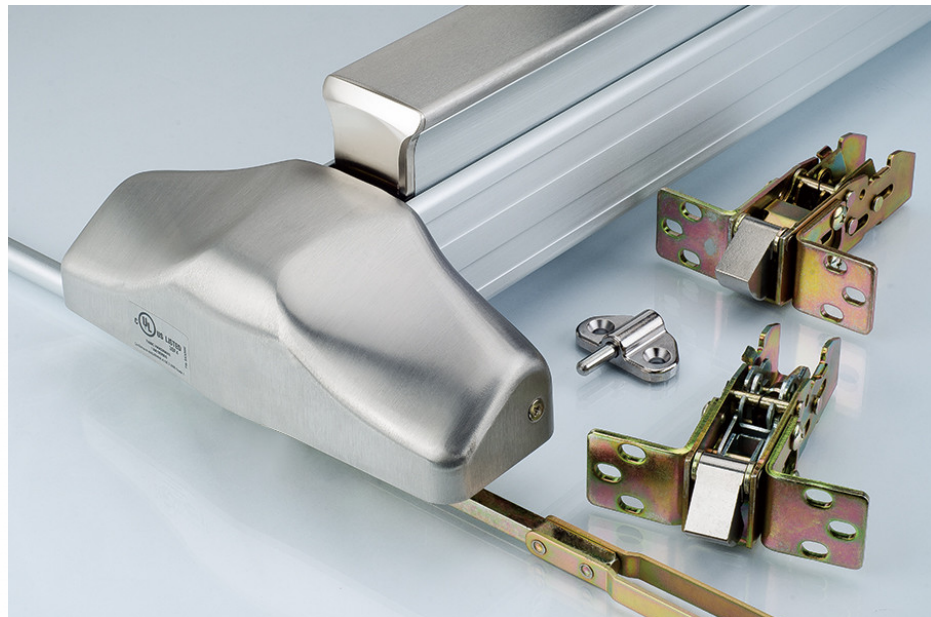
CVR

Applications

- Offices, schools, banks, assisted living facilities and other institutions or commercial buildings.

Doors & Preparations

- For all types of single and double doors.
- For new or retrofit installation into other manufacturers' devices.
- For doors 1-3/4" to 2-1/4" thick, up to 4' wide opening and up to 10' high; for thicker doors, consult factory.
- Furnished Standard for 1-3/4" thick, 3' wide opening and 7' high doors.



SPECIFICATIONS

Certification/Compliance	<ul style="list-style-type: none"> • Panic devices UL/cUL listed for UL305 and ANSI/BHMA A156.3 Grade 1 Panic Hardware. • UL/cUL Fire rated for 3-hour Fire Exit Hardware, conforms to UL10C and UBC7-2. Also complies with NFPA 80 Fire doors and windows. • Exit devices, levers, trims and pulls comply with American Disability Act (ADA) and NFPA 101 life safety code. 		
Center Case	<ul style="list-style-type: none"> • Heavy wrought steel assembly with top and bottom rod adjusters. • Adjustment accessible through center case after installation. 		
Vertical Rods	<ul style="list-style-type: none"> • 1/2" round tubing, standard rods accommodate 7' (2134mm) door. • Top rod length is 37" (940mm), Bottom rod length is 31-3/4" (805mm) standard. • Top rod length 49" (1245mm) is available for 8' (2438mm) door. • Extension rod available 23-7/8" (605mm) for doors ranging between 8' and 10' high. Specify when ordering. 		
Top Latch Bolt	<ul style="list-style-type: none"> • Stainless Steel, Pullman type deadlocking, 5/8" (16mm) throw. 		
Bottom Bolt	<ul style="list-style-type: none"> • Stainless Steel, Pullman type deadlocking, independent action 5/8" (16mm) throw. • Round Slide Bolt optional. 		
Top & Bottom Latch Case	<ul style="list-style-type: none"> • 4-1/2" x 2-1/8" x 1-1/2" (114mm x 54mm x 38mm). 		
Door Undercut	<ul style="list-style-type: none"> • 1/4" (6mm). 		
Strikes	<table border="0"> <tr> <td style="vertical-align: top;"> Panic Top: P/N. 216 Bottom: P/N. 227 </td> <td style="vertical-align: top; padding-left: 20px;"> Fire Top: P/N. 216 Bottom: P/N. 227F </td> </tr> </table>	Panic Top: P/N. 216 Bottom: P/N. 227	Fire Top: P/N. 216 Bottom: P/N. 227F
Panic Top: P/N. 216 Bottom: P/N. 227	Fire Top: P/N. 216 Bottom: P/N. 227F		
Dogging	<ul style="list-style-type: none"> • NOT available on Fire Exit Hardware. • Dogging options available for LD, CD, ED (ELR). • Flat/Hex key dogging standard. 		
Fasteners	<ul style="list-style-type: none"> • Machine screws and wood screws are furnished standard. 		
Sex Bolts (SNB)	<ul style="list-style-type: none"> • Required when used with wood, composite or non-reinforced hollow metal doors. For Exit Only device, specify 6-1024 SNB (No. 10-24). 		
Electric Functions	<p>Can be interfaced with building security systems:</p> <ul style="list-style-type: none"> • AL Alarm Exit • DE Delayed Egress Device • ELR Electric Latch Retraction • LM Latch Bolt Monitoring • RX Request to Exit • SS Signal Switch 		
Device Centerline from Finished Floor	<ul style="list-style-type: none"> • 39-5/8" (1006mm). 		
Fire Bolt (LBR)	<ul style="list-style-type: none"> • Available for door openings up to 8' wide x 10' high. Specify suffix "LBR". • Fire bolt is heat activated - used in less bottom rod (LBR) option for fire exit devices. 		
Handing	<ul style="list-style-type: none"> • Trim field reversible. • Device non-handed. 		
Cylinders	<ul style="list-style-type: none"> • NOT furnished standard, specify when required. 		

How to Order

Unless specified, 1000 Series Exit Device can be ordered as indicated below:

Optional Items: As sequenced below.

Device	Ordering example							
	ELR	ED 1500	LD	RBL	626	307	AAF	SMDF
Prefix for Electric Options								
AL	Alarm Exit							
DE	Delayed Egress Device							
E	Electric Mortise Lock							
ELR	Electric Latch Retraction							
LM	Latch Bolt Monitoring							
RX	Request to Exit							
SS	Signal Switch							
Blank	For Regular (Non-electric) Device							
Device Number and Rating								
Panic	ED 1100	RIM	Fire	ED 1100F	RIM			
	ED 1200	SVR		ED 1200F	SVR			
	ED 1300	CVR		ED 1300F	CVR			
	ED 1400	MORTISE		ED 1400F	MORTISE			
	ED 1500	3PT		ED 1500F	3PT			
Dogging (see page J-31)								
CD	Cylinder Dogging		LD	Less Dogging				
ED	Electric Dogging (ELR)		Blank	Flat/Hex Key Dogging				
Bottom Rod and Latch Options								
LBR	Less Bottom Rod		PL	Pullman Latch				
RBL	Round Bottom Latch							
Finish (see page J-8)								
605 (US3)	611 (US9)	613 (US10B)	626 (US26D)					
606 (US4)	612 (US10)	625 (US26)	630 (US32D)					
Device and Door Size								
36x84	3' Device for 2'4"~3'x7' (Standard)			4'	Device for 2'10"~4'x7'			
36x96	3' Device for 2'4"~3'x8'			4'	Device for 2'10"~4'x8'			
36x120	3' Device for 2'4"~3'x10'			4'	Device for 2'10"~4'x10'			
Strike Options (see page J-24)								
A	106 RIM Strike		F	224 VR Bottom Strike		L	336 Mortise Strike	
B	108 RIM Strike		G	225 VR Bottom Strike		M	337 Mortise Open Back Strike	
C	136 RIM Pair Door Strike		H	226 VR Bottom Strike		N	338 Mortise Open Back Strike	
D	215 SVR Top Strike		J	227/227F VR Bottom Strike				
E	216 CVR Top Strike		K	306 Mortise Strike				
Handing for Double Cylinder Device (see page J-28)								
LHR	Left Hand Reverse Bevel		Blank	For Regular Device				
RHR	Right Hand Reverse Bevel							
Other Miscellaneous Door Information								
SMDF	Single Hollow Metal Door and Frame			PMDF	Pair Hollow Metal Door and Frame			
SWDF	Single Wood Door and Frame			PWDF	Pair Wood Door and Frame			
SWMF	Single Wood Door and Hollow Metal Frame			PWMF	Pair Wood Door and Hollow Metal Frame			