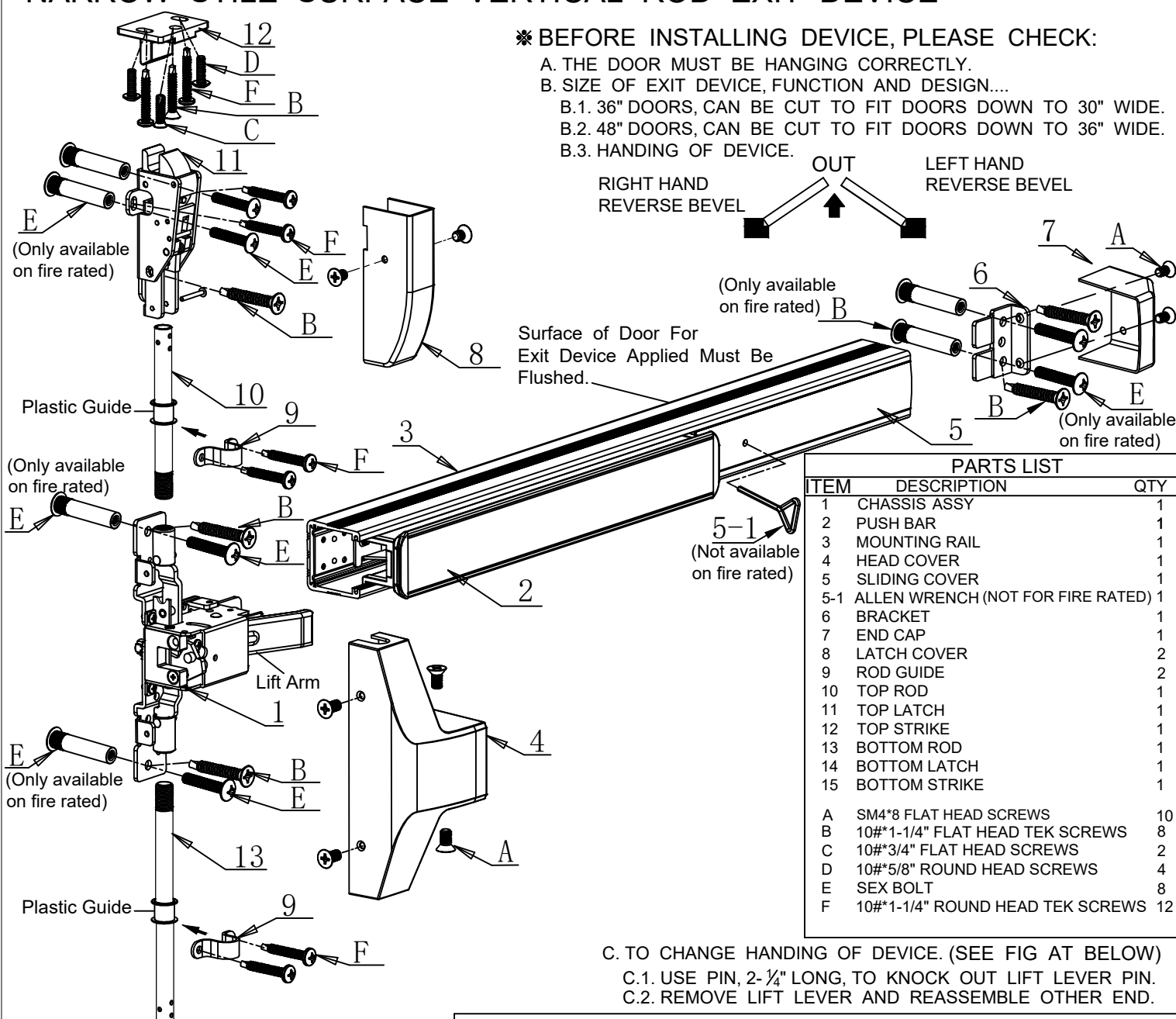


# INSTALLATION INSTRUCTIONS FOR HEAVY DUTY NARROW STILE SURFACE VERTICAL ROD EXIT DEVICE



## \* BEFORE INSTALLING DEVICE, PLEASE CHECK:

- A. THE DOOR MUST BE HANGING CORRECTLY.
- B. SIZE OF EXIT DEVICE, FUNCTION AND DESIGN...
  - B.1. 36" DOORS, CAN BE CUT TO FIT DOORS DOWN TO 30" WIDE.
  - B.2. 48" DOORS, CAN BE CUT TO FIT DOORS DOWN TO 36" WIDE.
  - B.3. HANDING OF DEVICE.



### PARTS LIST

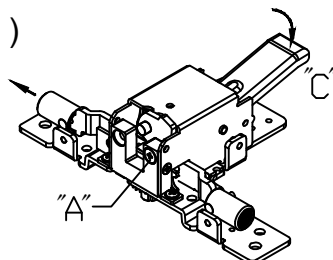
ITEM	DESCRIPTION	QTY
1	CHASSIS ASSY	1
2	PUSH BAR	1
3	MOUNTING RAIL	1
4	HEAD COVER	1
5	SLIDING COVER	1
5-1	ALLEN WRENCH (NOT FOR FIRE RATED)	1
6	BRACKET	1
7	END CAP	1
8	LATCH COVER	2
9	ROD GUIDE	2
10	TOP ROD	1
11	TOP LATCH	1
12	TOP STRIKE	1
13	BOTTOM ROD	1
14	BOTTOM LATCH	1
15	BOTTOM STRIKE	1
A	SM4*8 FLAT HEAD SCREWS	10
B	10#*1-1/4" FLAT HEAD TEK SCREWS	8
C	10#*3/4" FLAT HEAD SCREWS	2
D	10#*5/8" ROUND HEAD SCREWS	4
E	SEX BOLT	8
F	10#*1-1/4" ROUND HEAD TEK SCREWS	12

## C. TO CHANGE HANDING OF DEVICE. (SEE FIG AT BELOW)

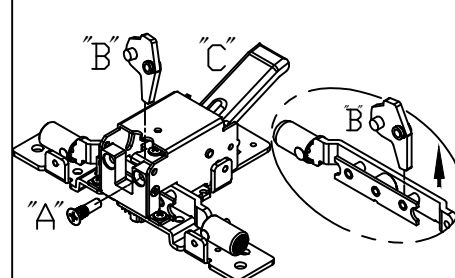
- C.1. USE PIN, 2- 1/4" LONG, TO KNOCK OUT LIFT LEVER PIN.
- C.2. REMOVE LIFT LEVER AND REASSEMBLE OTHER END.

## TO CHANGE HANDING OF DEVICE ( FOR EXAMPLE: FROM LHR to RHR )

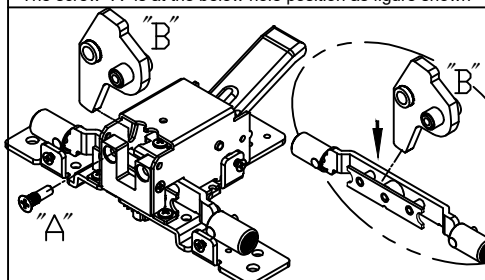
( LHR )



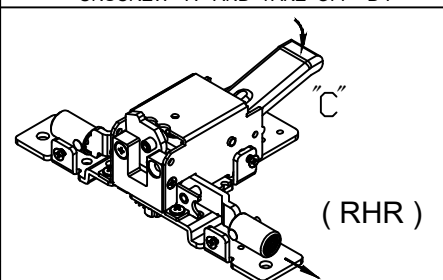
PRESS LIFT ARM "C" AND ENSURE THE DIRECTION.  
The screw "A" is at the below hole position as figure shown



UNSCREW "A" AND TAKE OFF "B".



TURN "B" 180° AND PUT IT BACK AS FIGURE SHOWN  
THEN, FASTEN "A" AT ABOVE SCREW HOLE.



( RHR )

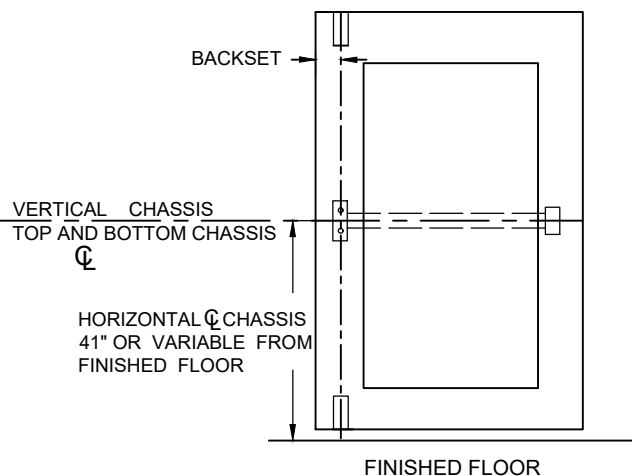
OPERATE LIFT ARM "C" TO ENSURE THE  
PROCESSING DIRECTION IS REVERSED.

## 1. MARK VERTICAL AND HORIZONTAL REFERENCE LINES ON DOOR.

DETERMINE BACKSET TO LOCATE VERICAL REFERENCE LINE.

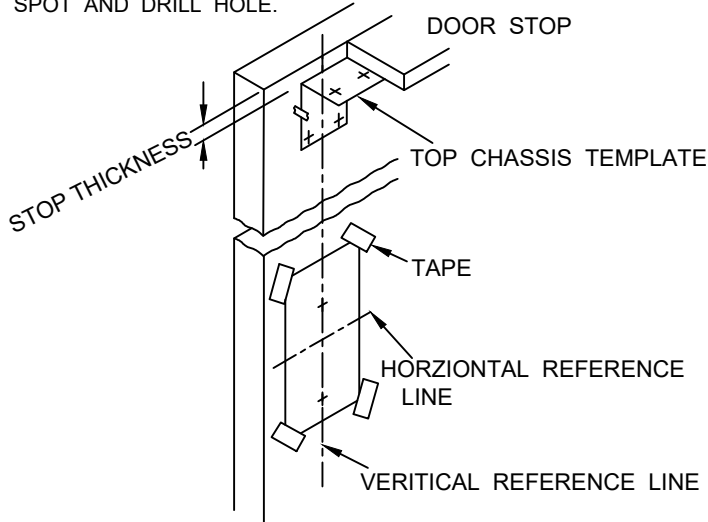
A. IF LOCK STILE IS 4-1/2" WIDE OR WIDER BACKSET IS 1-15/16".

B. IF LOCK STILE IS LESS THAN 4-1/2" WIDE, BACKSET IS HALF OF THE EXPOSED WIDTH OF LOCK STILE.



## 2. DOOR PREPARATION

TAPE TEMPLATE ON INSIDE OF DOOR ALONG REFERENCE LINE. SPOT AND DRILL HOLE.



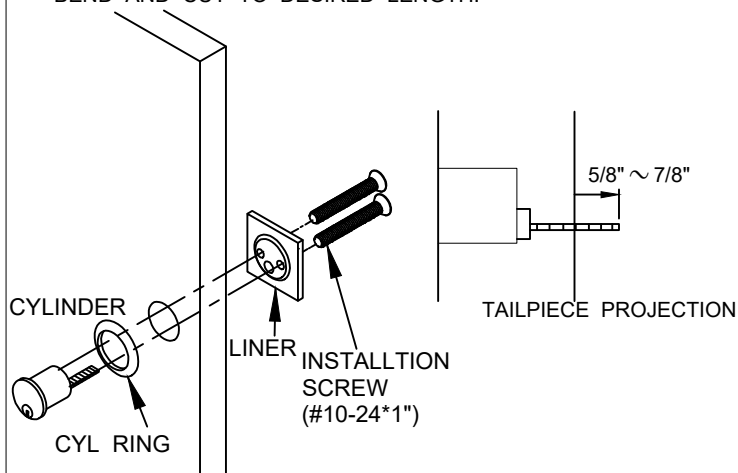
## 3. INSTALL CYLINDER

A. INSERT THE CYLINDER THROUGH CYL RING HOLE ON THE DOOR.

B. KEEP THE TAILPIECE HORIZONTALLY.

C. MOUNT LINER ON INSIDE OF DOOR.

D. TAILPIECE PROJECTION OVER INSIDE OF DOOR IS SUGGESTED IN THE RANGE "5/8 ~ 7/8". IF NECESSARY, USE A PLIER TO BEND AND CUT TO DESIRED LENGTH.



## 4. ATTACH TOP AND BOTTOM CHASSIS



A. MOUNT TOP STRIKE PER LOCATION IN 2ND STEP.

B. SCREW TOP ROD INTO MAIN SLIDE.

C. SLIDE GUIDE AND COVER ON TO TOP ROD CHASSIS BY INSERTING ADJ PIN. THRU RETRACTOR AND MIDDLE HOLE IN ROD. (SEE FIG AT RIGHT)

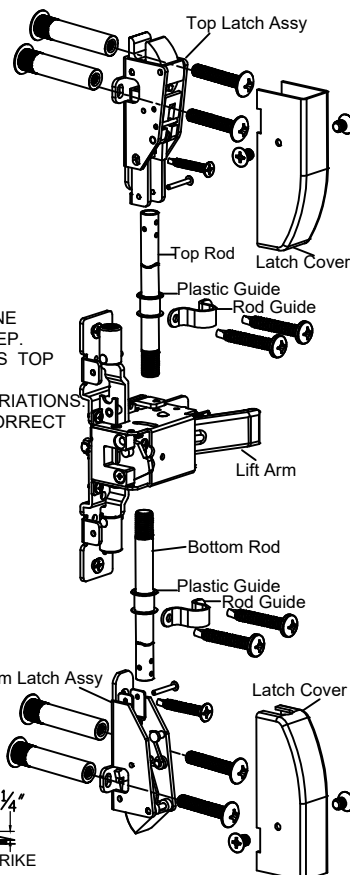
ADJ TOP CHASSIS MOUNTING HOLES LINE UP WITH LOCATION MARKED IN 2ND STEP.

D. MOUNT BOTTOM CHASSIS SAME WAY AS TOP CHASSIS (SEE FIG AT RIGHT)

E. AS TO BOTTOM STRIKE APPLICATION VARIATIONS PLEASE REFER FIG BELOW FOR THE CORRECT MARRIAGE.

F. FASTEN GUIDE.

IF SHORTER ROD REQUIRED, CUT TO LENGTH AND DRILL 1/8" Ø HOLE THRU.

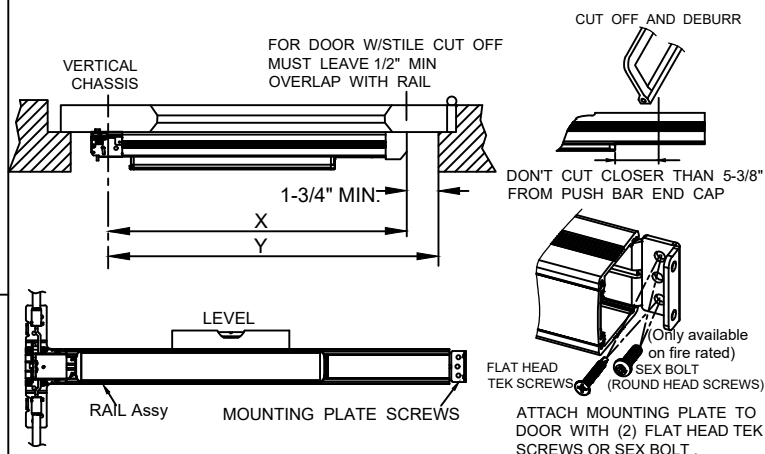


## 5. APPLY RAIL ASSEMBLY

A. CHECK THE SIZE OF DEVICE, IF CUTTING IS REQUIRED.

B. DETERMINE CUT OFF LENGTH "X" BY SUBTRACTING 1-3/4" FROM "Y". MARK CUT OFF POINT ON MOUNTING RAIL.

C. DREPRESS ARM INTO RAIL OPENING AND SLIDE RAIL ONTO CHASSIS. LEVEL RAIL AND FASSTEN CHASSIS AND MOUNTING PLATE.



## 6. APPLY COVERS

CHECK THE DEVICE IS OPERATING NORMALLY, AND FASTEN COVERS WITH SCREWS AS BELOW.

