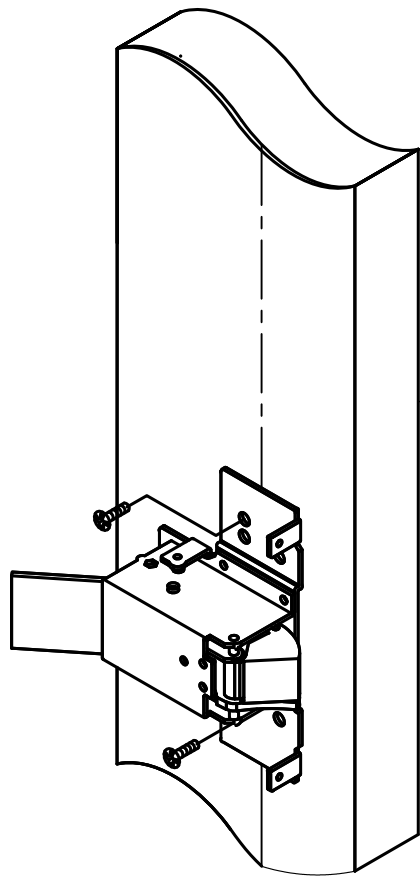
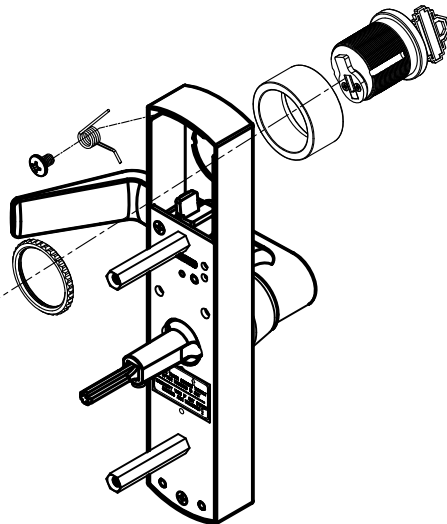


INSTRUCTION FOR NARROW STILE ESCUTCHEON LEVER TRIM

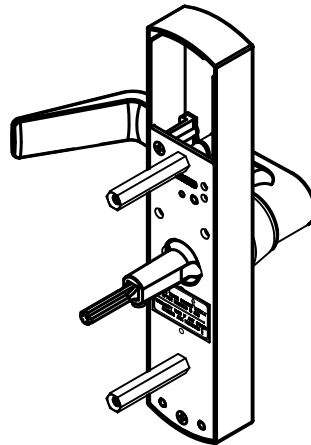


(ANSI Function 08)



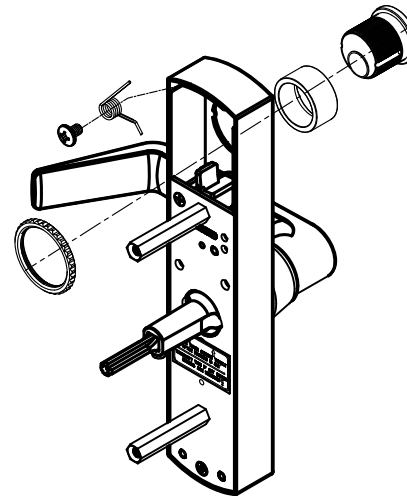
Entrance -
Key Locks/Unlocks Lever

(ANSI Function 14)



Passage - No Cylinder
Lever Always Active

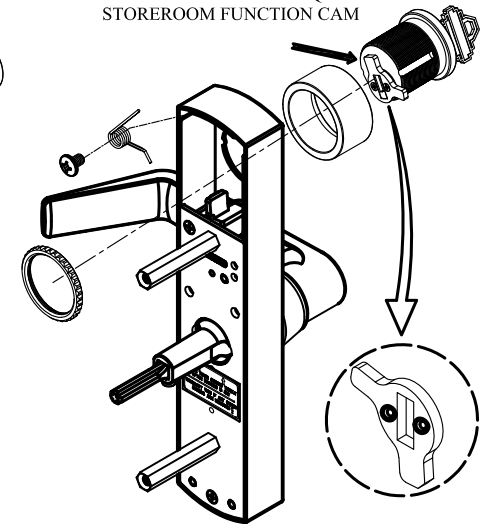
(ANSI Function 02)



Dummy -
With Dummy Cylinder

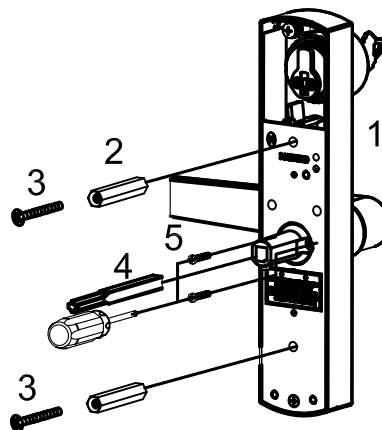
(ANSI Function 03)

PROPER OPERATION REQUIRES
STOREROOM FUNCTION CAM



Storeroom -
Key Unlocks Lever

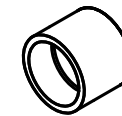
Parts List		
No	Parts	Q'ty
1	Trim	1
2	Thru. bolts	2
3	M5x25 Screw	2
4	Spindle	1
5	M5x12 screw	2
6	Installation	1
7	Template	1



※ NOTE: 03 & 08 function - Standard collar height fits 1- $\frac{1}{4}$ " Mortise Cylinder only , other Mortise Cylinder height should use proper size collar.

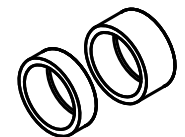


Standard collar



Higher collar (optional)

or

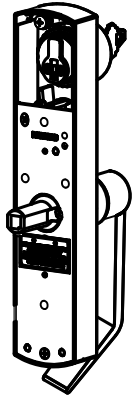


Extention collar (optional)

INSTRUCTION FOR SETTING HAND OF LEVER (EXAMPLE FOR RH)

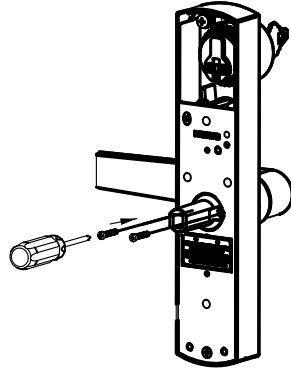
Page 2 of 2

Step 1.
Trim shipped with lever in the neutral
(non-handed) position.



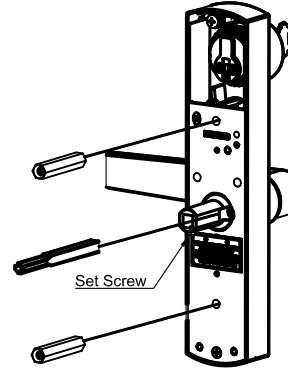
(Neutral Position)

Step 2.
Rotate lever to desired hand. Insert (2) lever
handing hex screws together before tighten.
Tighten these (2) screws with hex wrench.



(RH)

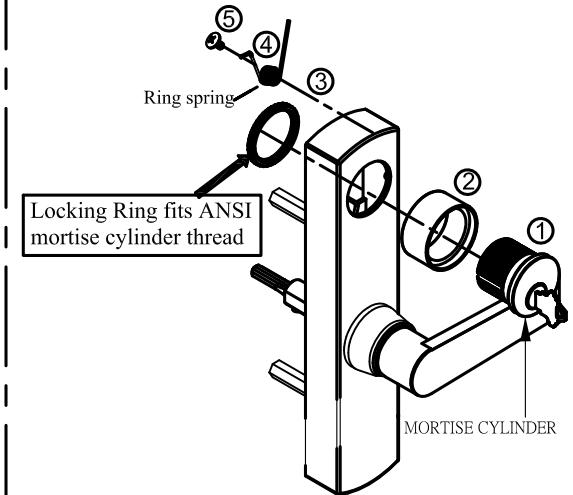
Step 3.
Install (2) thru-bolts. Insert spindle base on
door thickness and fix set screw.
※ Suitable for door thickness
1- $\frac{3}{4}$ "~2- $\frac{3}{8}$ " (45~60mm)



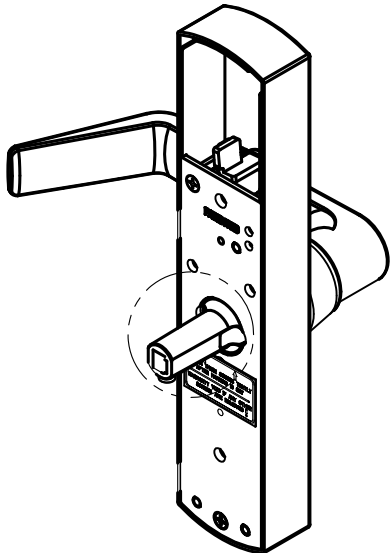
(RH)

※After setting, please ensure the (2)
lever handing screws are tighten to
avoid lever operating problems.

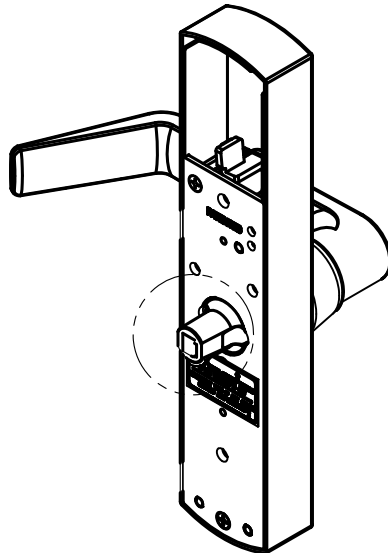
Cylinder installation:
(follow ①→②→③→④→⑤)
※ Standard collar height fits
1- $\frac{1}{4}$ "~1- $\frac{3}{8}$ " mortise cylinder.



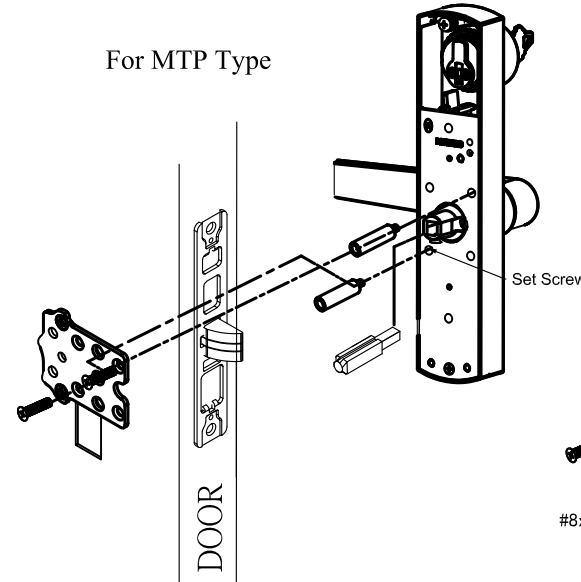
Standard Type



For CVR / MTP Type



For MTP Type



For CVR Type

