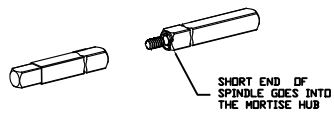


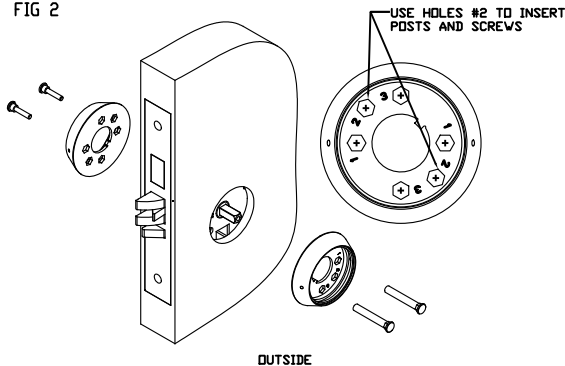
FIG 1

SPINDLE INSTALLATION



SPINDLES ARE INSERTED INTO THE MORTISE LOCK HUBS, THERE IS A SCREW CLIPPED INTO 1 SPINDLE FOR SCREWING INTO THE OTHER SPINDLE AND HOLDING THEM IN PLACE.

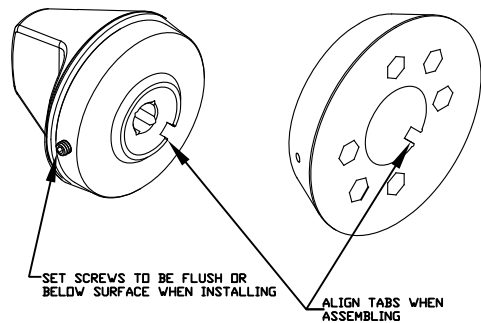
FIG 2



USE HOLES #2 TO INSERT POSTS AND SCREWS

OUTSIDE

FIG 3



SET SCREWS TO BE FLUSH OR BELOW SURFACE WHEN INSTALLING

ALIGN TABS WHEN ASSEMBLING

FIG 4

AFTER SECURING ROSES ON THE DOOR, PLACE KNOB ASSEMBLY IN ROSE. THERE ARE 2 HOLES IN THE ROSE. INSERT A 5/64TH ALLEN WRENCH IN THE SET SCREW THROUGH THE HOLE IN ROSE AND SECURE KNOB ASSEMBLY BY TURNING COUNTER-CLOCKWISE (TO REMOVE ROTATE CLOCKWISE).

NOTE: WHEN TIGHTENING BALANCE BOTH SET SCREWS (TIGHTEN EVENLY) OR BINDING MAY OCCUR.

TURN COUNTER-CLOCKWISE TO TIGHTEN.



REV

DESCRIPTION

DATE

RX KNOB INSTALLATION GUIDE FOR TOWNSTEEL MORTISES

1. INSTALL SPINDLES IN MORTISE PER FIG 1. INSTALL I/S & O/S ESCUTCHEONS ON THE DOOR AS SHOWN, SECURE WITH ESCUTCHEON MOUNTING SCREWS. DO NOT TIGHTEN UNTIL STEP 5.
2. PLACE THE 2 INSIDE MOUNTING POSTS THROUGH HOLE NUMBER AS DESIGNATED ON THE ROSE- SEE FIG 2.
3. HOLDING THE 2 POSTS IN POSITION SLIDE ONTO THE MORTISE WITH POSTS GOING THROUGH THE MORTISE THROUGH HOLES. SEE FIG 2. NOTE- CAN INSTALL THE KNOB ASSEMBLY ON THE OUTSIDE PER STEP 7 AND THIS WILL HOLD THE POSTS IN POSITION.
4. ON THE OPPOSITE SIDE- PUT THE 2 MOUNTING SCREWS THROUGH HOLES (SEE TABLE) AS DESIGNATED ON THE ROSE- SEE FIG 2. ALIGN THE SCREWS WITH THE POSTS AND TIGHTEN.
5. INSTALL THE KNOB ASSEMBLY INTO THE ROSE- ALIGN TABS. SET SCREWS HAVE TO BE FLUSH OR BELOW THE SURFACE TO ALLOW CLEARANCE. SEE FIG 3. TIGHTEN ESCUTCHEON MTG SCREWS.

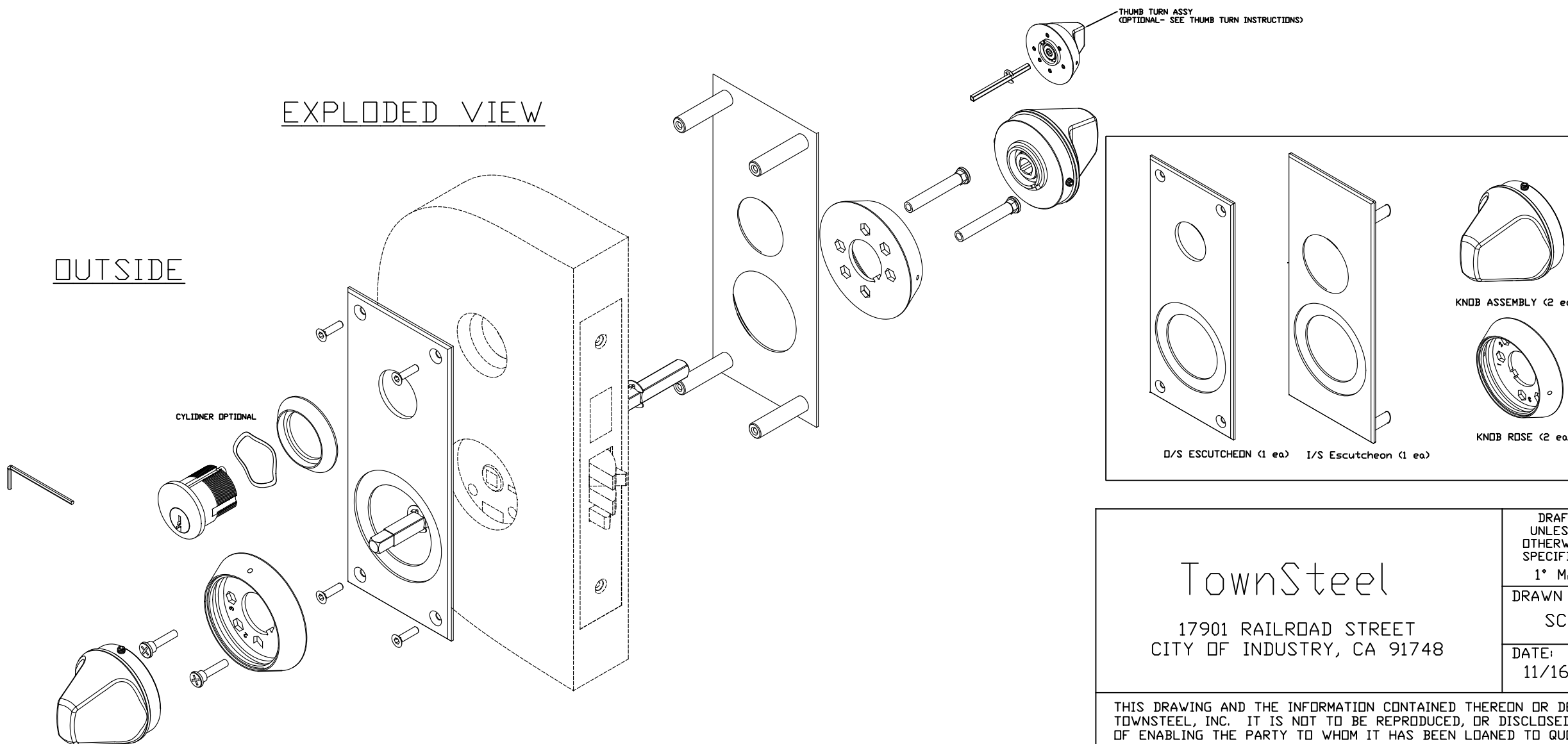
NOTE: ONCE THE KNOB ASSEMBLY IS SET ON BOTH SIDES- ROTATE THE KNOB ON BOTH SIDES TO ENSURE THE MORTISE LATCH RETRACTS AND THERE IS NO BINDING. IF THE LATCH OR KNOB BINDS REMOVE THE KNOB ASSEMBLY FROM THE MOUNTING SCREW SIDE AND LOOSEN THE MOUNTING SCREWS AND ALIGN THE ROSE WITH THE CENTER OF THE HUBS AS MUCH AS POSSIBLE UNTIL NO BINDING OCCURS. TIGHTEN THE SCREWS (INCLUDING ESCUTCHEON MOUNTING SCREWS) AND RETRY.

6. INSERT THE ALLEN WRENCH THROUGH EACH HOLE (2 IN EACH ROSE) TO ENGAGE THE SET SCREW AND SECURE THE KNOB ASSEMBLY. ROTATE COUNTERCLOCKWISE TO TIGHTEN IN THE ASSEMBLY AND ROTATE CLOCKWISE TO LOOSEN. SEE FIG 4. NOTE: WHEN TIGHTENING BALANCE BOTH SET SCREWS (TIGHTEN EVENLY) OR BINDING MAY OCCUR.

7. CHECK LOCK FOR CORRECT OPERATION BEFORE CLOSING THE DOOR.

EXPLODED VIEW

OUTSIDE



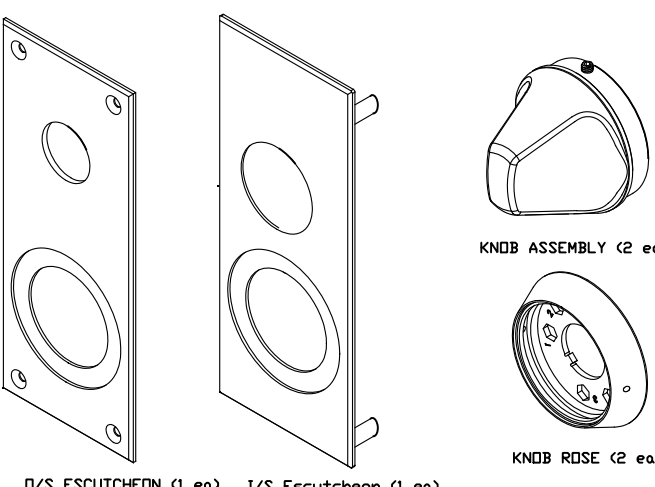
CYLINDER OPTIONAL

THUMB TURN ASSY (OPTIONAL- SEE THUMB TURN INSTRUCTIONS)

HOSPITAL LOCK PARTS LIST

SCREW PACK BAG			
SPINDLE CLIP (2 ea) (Installed on spindles)		1	
INSIDE MOUNTING SCREW (2 ea)			
OUTSIDE MOUNTING POST (2 ea)			
5/64 ALLEN WRENCH (1 ea)			

SCREW PACK BAG			
SPINDLE (1 ea)		4	
SPINDLE (1 ea)			



D/S ESCUTCHEON (1 ea) I/S Escutcheon (1 ea) KNOB ASSEMBLY (2 ea) KNOB ROSE (2 ea)

<p>TownSteel</p> <p>17901 RAILROAD STREET CITY OF INDUSTRY, CA 91748</p>	<p>DRAFT UNLESS OTHERWISE SPECIFIED: 1° MAX</p>	<p>TOLERANCES UNLESS OTHERWISE SPECIFIED:</p> <p>X.X (METRIC) = ±0.4</p> <p>X.XX (METRIC) = ±0.15</p> <p>FRACTIONS = ±.8</p> <p>ANGLES = ±1/2°</p> <p>© .12</p> <p>MACHINED SURFACES 125/</p> <p>THIRD ANGLE</p>	<p>MATERIAL: NOTED</p>
	<p>DATE: 11/16/17</p>		<p>HEAT TREAT: NA</p>
	<p>DRAWN BY: SC</p>		<p>FINISH: NA</p>
<p>TITLE: LIGATURE RESISTANT KNOB, ESCUTCHEON, ASSY INST.</p>		<p>PART#: MRX-E-K</p>	

THIS DRAWING AND THE INFORMATION CONTAINED THEREON OR DERIVED THEREFROM ARE THE CONFIDENTIAL PROPERTY OF TOWNSTEEL, INC. IT IS NOT TO BE REPRODUCED, OR DISCLOSED TO OTHERS, AND MAY BE USED ONLY FOR THE PURPOSE OF ENABLING THE PARTY TO WHOM IT HAS BEEN LOANED TO QUOTE ON OR FILL AN ORDER FOR TOWNSTEEL, INC., OR AS MAY BE OTHERWISE AUTHORIZED BY TOWNSTEEL, INC. IN WRITING.