

FIG 1

SPINDLE SCREW INSTALL

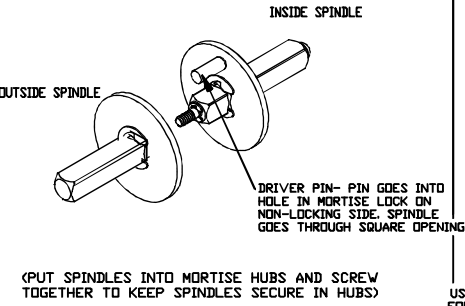


FIG 2

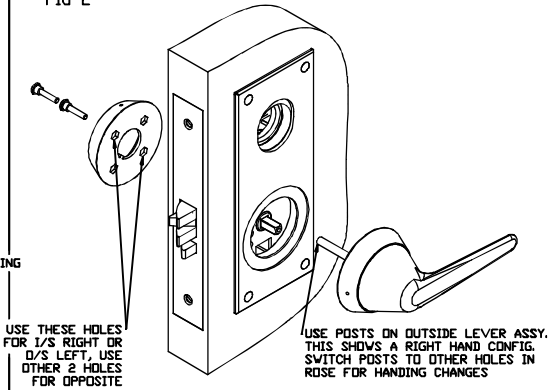


FIG 3

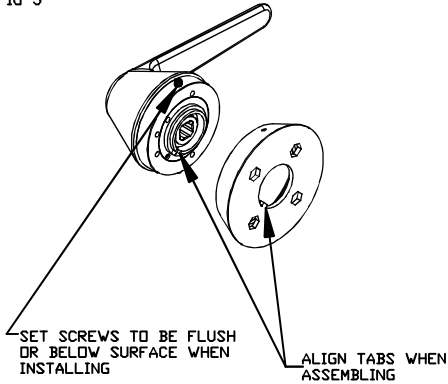
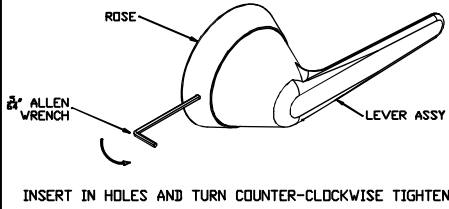


FIG 4

AFTER SECURING ROSES ON THE DOOR, PLACE LEVER ASSEMBLY IN THE ROSE. USE A 5/16" ALLEN WRENCH THROUGH THE HOLES (2) IN ROSE AND SECURE LEVER ASSEMBLY BY TURNING THE SET SCREW COUNTER-CLOCKWISE (TO REMOVE ROTATE CLOCKWISE).



REV

DESCRIPTION

DATE

MRXL-E LOCK PARTS LIST

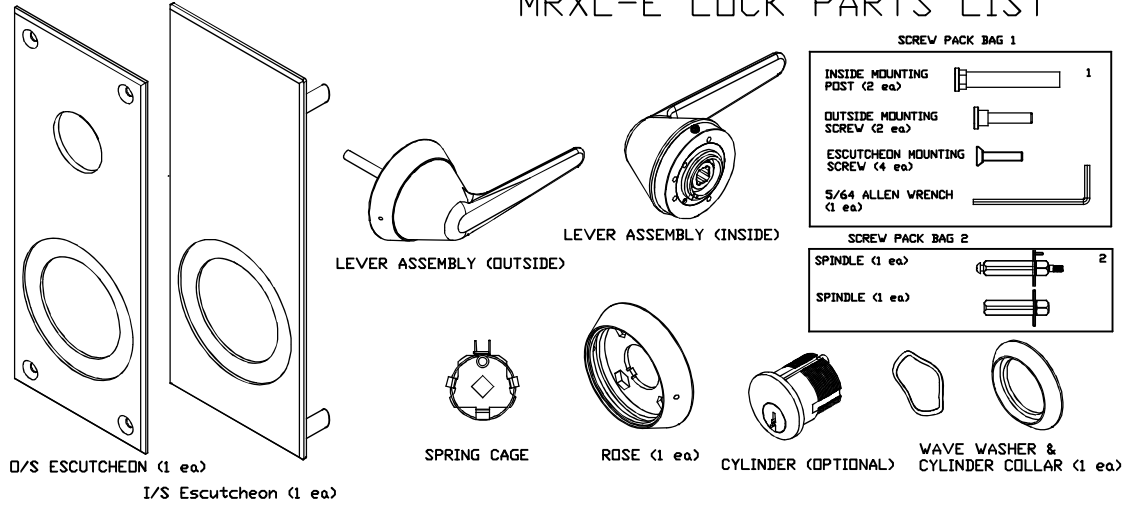
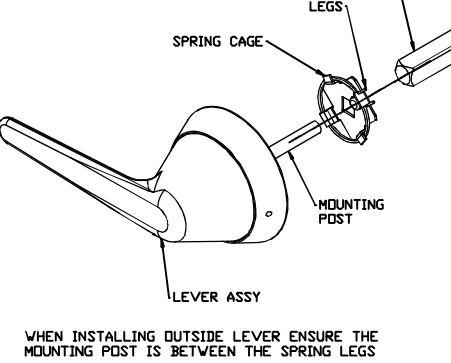
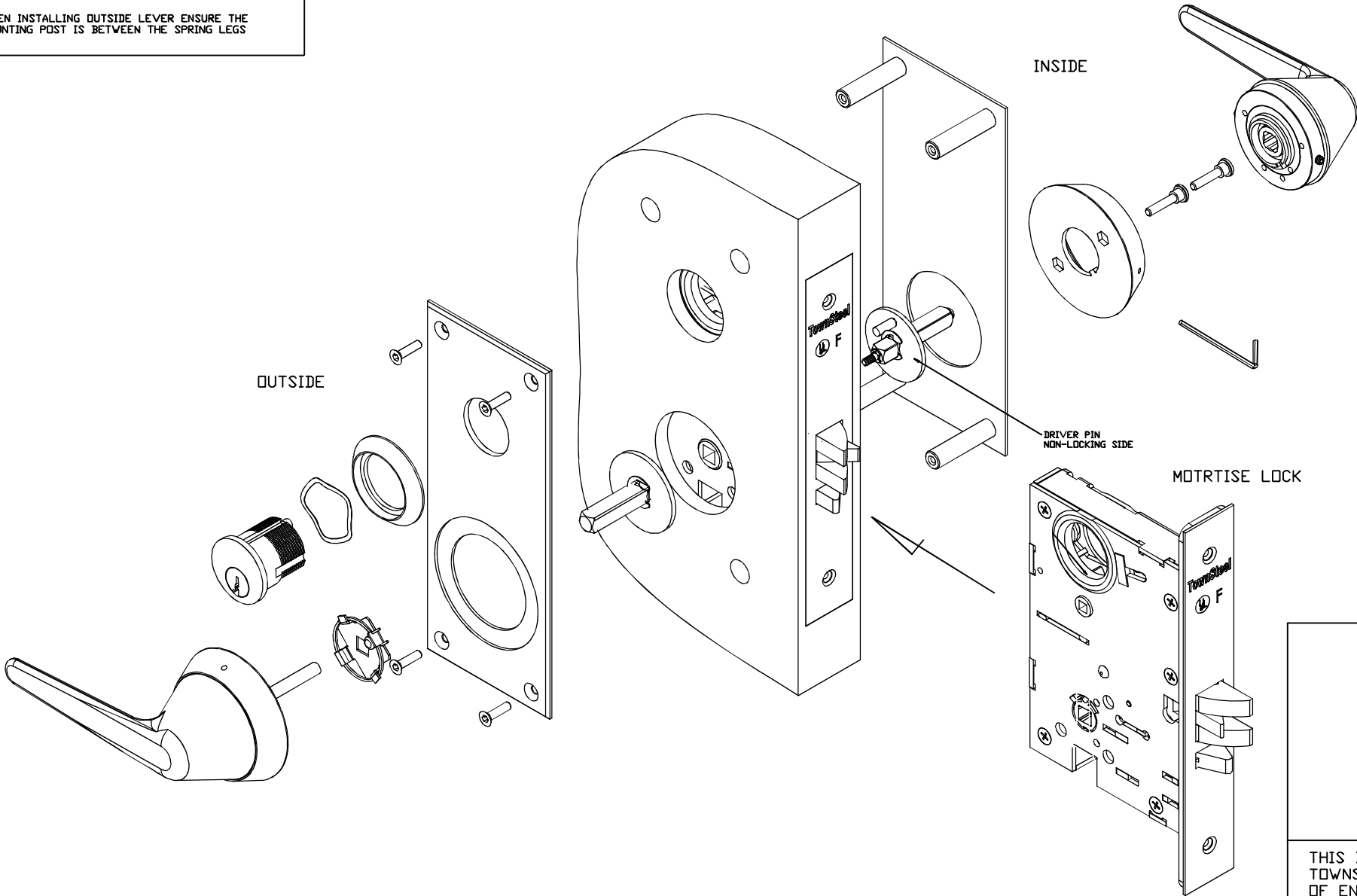


FIG 5

SPRING CAGE INSTALL



EXPLODED VIEW (LEFT HAND SHOWN)



MRXL ESCUTCHEON INSTALLATION GUIDE FOR TOWNSTEEL MORTISES

1. PREPARE DOOR CUTOUT PER TEMPLATE.
 2. INSTALL MORTISE INTO THE PREPARED DOOR (SEE MORTISE INSTRUCTIONS FOR HANDING & CLUTCHING INSTRUCTIONS).
 3. INSTALL SPINDLES IN MORTISE PER FIG 1 & EXPLODED VIEW. NOTE: DRIVER PIN IS ON THE NON-LOCKING SIDE (USUALLY INSIDE).
 4. INSTALL 1/S AND 0/S ESCUTCHEONS, USE THE 4 ESCUTCHEON MOUNTING SCREWS TO ASSEMBLE (LEAVE SCREWS LOOSE SO YOU CAN ADJUST ALIGNMENT- SEE NOTE AFTER STEP 7).
 5. SLIDE THE SPRING CAGE ON THE OUTSIDE SPINDLE (SEE FIG 5). SLIDE OUTSIDE LEVER ASSEMBLY ONTO THE MORTISE WITH POSTS GOING THROUGH THE MORTISE THROUGH HOLES AND LINED UP WITH THE SPRING CAGE LEGS. SEE FIG 2 & FIG. 5.
 6. ON THE OPPOSITE SIDE- PUT THE 2 MOUNTING SCREWS THROUGH HOLES ON THE ROSE- SEE FIG 2. ALIGN THE SCREWS WITH THE POSTS AND TIGHTEN.
 7. INSTALL THE INSIDE LEVER ASSEMBLY INTO THE ROSE- ALIGN TABS. SET SCREWS HAVE TO BE FLUSH OR BELOW THE SURFACE TO ALLOW CLEARANCE. SEE FIG 3.
- NOTE: ONCE THE LEVER ASSEMBLY IS SET ON BOTH SIDES- ROTATE THE LEVER ON BOTH SIDES TO ENSURE THE MORTISE LATCH RETRACTS AND THERE IS NO BINDING. IF THE LATCH OR LEVER BINDS REMOVE THE LEVER ASSEMBLY FROM THE MOUNTING SCREW SIDE AND LOOSEN THE MOUNTING SCREWS AND ALIGN THE ROSE WITH THE CENTER OF THE HUBS AS MUCH AS POSSIBLE UNTIL NO BINDING OCCURS. TIGHTEN THE SCREWS AND RETRY.
8. INSERT THE ALLEN WRENCH THROUGH EACH HOLE (2 IN EACH ROSE) TO ENGAGE THE SET SCREW AND SECURE THE LEVER ASSEMBLY. ROTATE COUNTERCLOCKWISE TO TIGHTEN IN THE ASSEMBLY AND ROTATE CLOCKWISE TO LOOSEN. SEE FIG 4.
 9. INSTALL CYLINDER (COLLAR, WAVE WASHER, CYLINDER) AND SECURE WITH SET SCREW (UNDER MORTISE FACE PLATE).
 10. IMPORTANT: CHECK LOCK FOR CORRECT OPERATION BEFORE CLOSING THE DOOR.
 11. LEVER HANDING- CHANGE MOUNTING POST POSITION TO CHANGE HANDING - SEE FIG 2 FOR RH. SEE MORTISE HANDING CHANGE INSTRUCTIONS TO CHANGE MORTISE HANDING. NOTE: DRIVER PIN IN ON NON-LOCKING SIDE (SEE EXPLODED VIEW).

TownSteel

17901 RAILROAD STREET
CITY OF INDUSTRY, CA 91748

DRAFT
UNLESS
OTHERWISE
SPECIFIED:
1" MAX

DRAWN BY:
SC

DATE:
10/23/15

B

TOLERANCES
UNLESS OTHERWISE
SPECIFIED:

X.X (METRIC) = ±0.4
X.XX (METRIC) = ±0.15
FRACTIONS = ±.8
ANGLES = ±1/2°
◎ .12

MACHINED SURFACES 125/
◎ THIRD ANGLE

MATERIAL: NOTED

HEAT TREAT: NA

FINISH: 32D

TITLE:
MRXL ESCUTCHEON
ASSY INSTRUCTIONS

PART#: MRXL-E

THIS DRAWING AND THE INFORMATION CONTAINED THEREON OR DERIVED THEREFROM ARE THE CONFIDENTIAL PROPERTY OF TOWNSTEEL, INC. IT IS NOT TO BE REPRODUCED, OR DISCLOSED TO OTHERS, AND MAY BE USED ONLY FOR THE PURPOSE OF ENABLING THE PARTY TO WHOM IT HAS BEEN LOANED TO QUOTE ON OR FILL AN ORDER FOR TOWNSTEEL, INC., OR AS MAY BE OTHERWISE AUTHORIZED BY TOWNSTEEL, INC. IN WRITING.