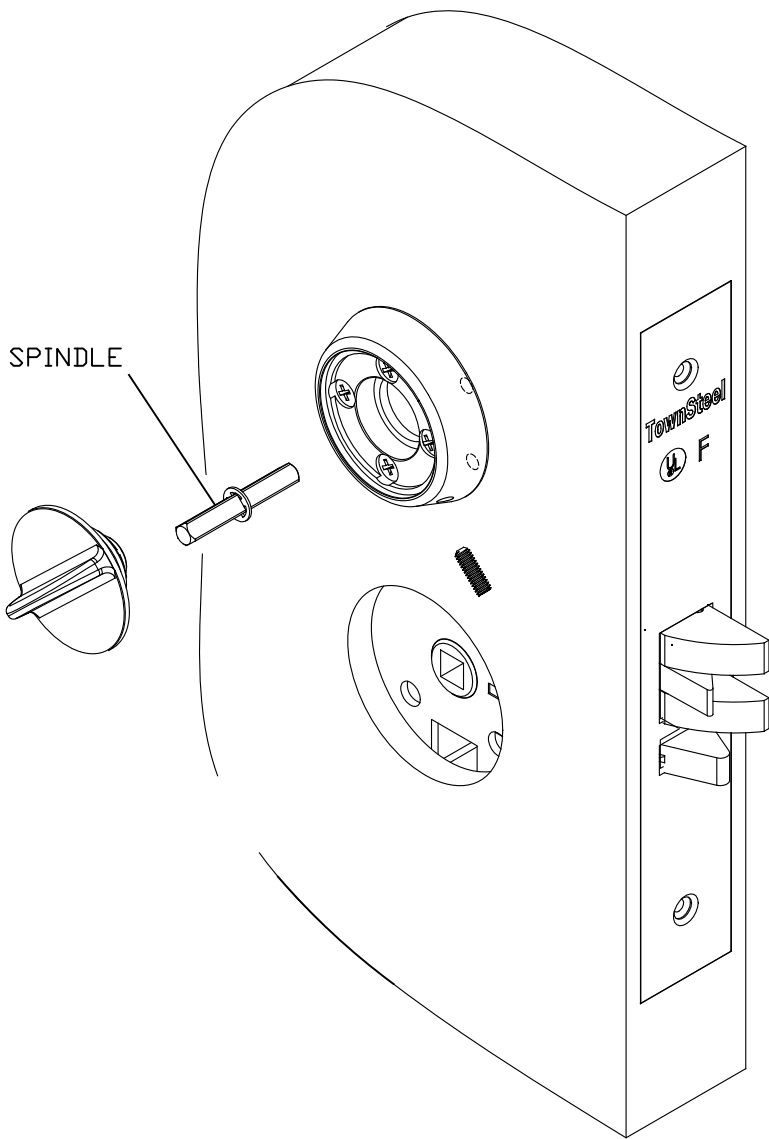
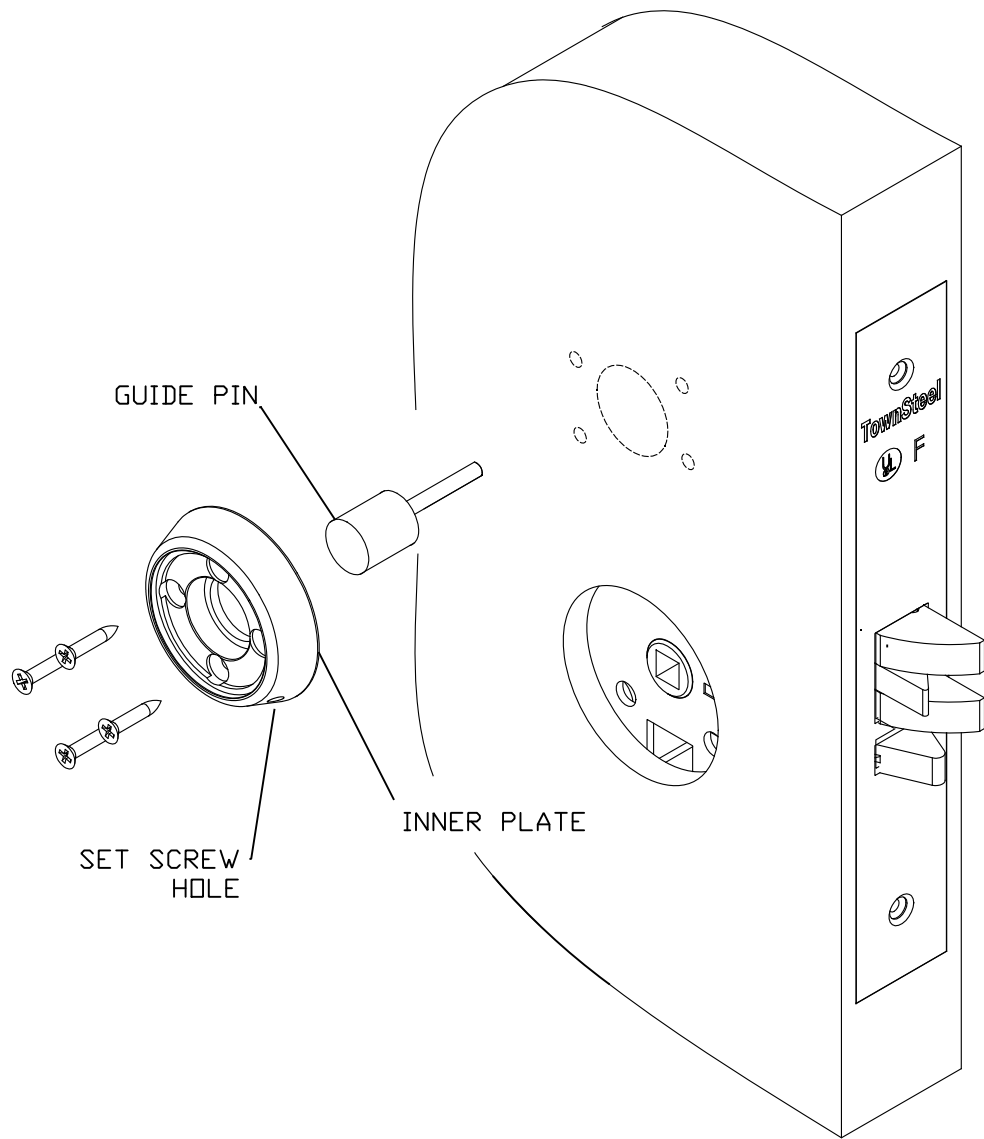


USING GUIDE PIN TO ALIGN INNER
PLATE & INSTALL THUMB TURN



LIGATURE RESISTANT THUMB TURN INSTRUCTIONS

1. PREPARE DOOR PER TEMPLATE. NOTE: ALWAYS LEAVE DOOR OPEN DURING INSTALLATION.
2. USE THE GUIDE PIN TO ALIGN THE INNER PLATE. MATCH DRILL (OR MARK LOCATION AND DRILL) THE 4 HOLES TO MOUNT THE INNER PLATE. PILOT HOLE SIZE FOR #6 SCREW IN A WOOD DOOR IS 5/64". LOCATION OF SET SCREW HOLE TO BE APPROXIMATELY AS SHOWN.
3. MOUNT THE INNER PLATE WITH THE 4 SCREWS AND REMOVE GUIDE PIN.
4. INSTALL THE SPINDLE & THUMB TURN, SCREW IN SET SCREW TO SECURE THE THUMB TURN (DO NOT OVER TIGHTEN).
5. OPERATE THE THUMB TURN TO ENSURE PROPER INSTALLATION, ALIGNMENT AND OPERATION.

<div>TownSteel</div> <div>17901 RAILROAD STREET CITY OF INDUSTRY, CA 91748</div>	DRAFT UNLESS OTHERWISE SPECIFIED: 1° MAX	<div>B</div> <div>TOLERANCES UNLESS OTHERWISE SPECIFIED: X.X (METRIC) =±0.4 X.XX (METRIC) =±0.15 FRACTIONS = ±.8 ANGLES = ±1/2° © .12 MACHINED SURFACES 125/ THIRD ANGLE</div>	MATERIAL: NOTED
	DRAWN BY: SC		HEAT TREAT: N/A
	DATE: 8/14/19		FINISH: 32D
	TITLE: MRXL W LIGATURE RESISTANT T-TURN		
THIS DRAWING AND THE INFORMATION CONTAINED THEREON OR DERIVED THEREFROM ARE THE CONFIDENTIAL PROPERTY OF TOWNSTEEL, INC. IT IS NOT TO BE REPRODUCED, OR DISCLOSED TO OTHERS, AND MAY BE USED ONLY FOR THE PURPOSE OF ENABLING THE PARTY TO WHOM IT HAS BEEN LOANED TO QUOTE ON OR FILL AN ORDER FOR TOWNSTEEL, INC., OR AS MAY BE OTHERWISE AUTHORIZED BY TOWNSTEEL, INC. IN WRITING.			PART#: T-TURN 1001 INSTALL