

NOTES:

Only for 10-30 Vdc units isntalled without a panic device
Locks to be powered with a UL294 or UL603 regulated power supply
Locks to be installed in compliance with NFPA 720 and applicable building codes

TOWNSTEEL TRIM MODEL NUMBERS:

MSS, MSE, XMRXA, XMRX-S-L, XMRX-E-L, XMRX-S-K, XMRX-E-K

TOWNSTEEL MODEL NUMBERS:

- F-30X 10-30 Vdc Fail Safe or Secure
F-30XDB 10-30 VdcFail Safe or Secure, deadbolt
F-30X1DC 10-30 VdcFail Safe or Secure, deadbolt, double cylinder
F-30XC 10-30 VdcFail Safe or Secure, double cylinder
- All devices require a PCU
 - 10 to 30 volts DC input to the PCU
 - All units are field changeable for Fail Safe or Fail Secure (X=1 or 2, 301 is fail safe, 302 is fail secure).
 - May be suffixed by: Different trim (low, regular, square, etc. roses), lever styles, rigid, clutching, deadbolt (D or DB), double locking (C), auto deadbolt (ADB), sensors (PRIV, RQE, MKD, DAJ)

INSTALLATION GUIDE FOR 30X SERIES ELECTRIFIED MORTISES

INSTRUCTIONS

1. PREPARE MORTISE POCKET IN DOOR PER TEMPLATE. ACCESS FOR THE WIRING TO BE PER INSTALLERS REQUIREMENTS. IT IS RECOMMENDED THAT AN ACCESS CHANNEL IS BORED TO PROVIDE CONTACT FROM THE ELECTRIC TRANSFER HINGE OR OTHER MEANS OF TRANSFER TO THE MORTISE POCKET.
2. CONNECT WIRES AS NECESSARY (SOME OPTIONS MAY NOT USED) AND SLIP THE MORTISE INTO THE PREPARED POCKET IN THE DOOR. TAKE CARE TO ENSURE WIRES ARE NOT PINCHED OR DAMAGED. NOTE: IT IS RECOMMENDED THAT ALL WIRING BE DONE BY A LICENSED ELECTRICIAN FAMILIAR WITH THE SUPPORTING EQUIPMENT.
3. ALWAYS ENSURE DOOR OPERATES PROPERLY BEFORE LOCKING.

SPECIFICATIONS:

MOTOR (SPECIFIED BY MODEL NUMBER):

6VDC WIRE SIZE 24-26AWG OPERATE AT 10-30VDC (VOLTAGE TO UNIT IS CONTROLLED BY THE PCU PROVIDED FOR THIS LOCK)

SWITCHES (NO or NC):

30VDC 2A WIRE SIZE 26-28AWG

TERMS

FAIL SAFE- OUTER TRIM IS LOCKED WHEN POWER IS APPLIED. WHEN POWER IS REMOVED THE OUTER TRIM REMAINS UNLOCKED.

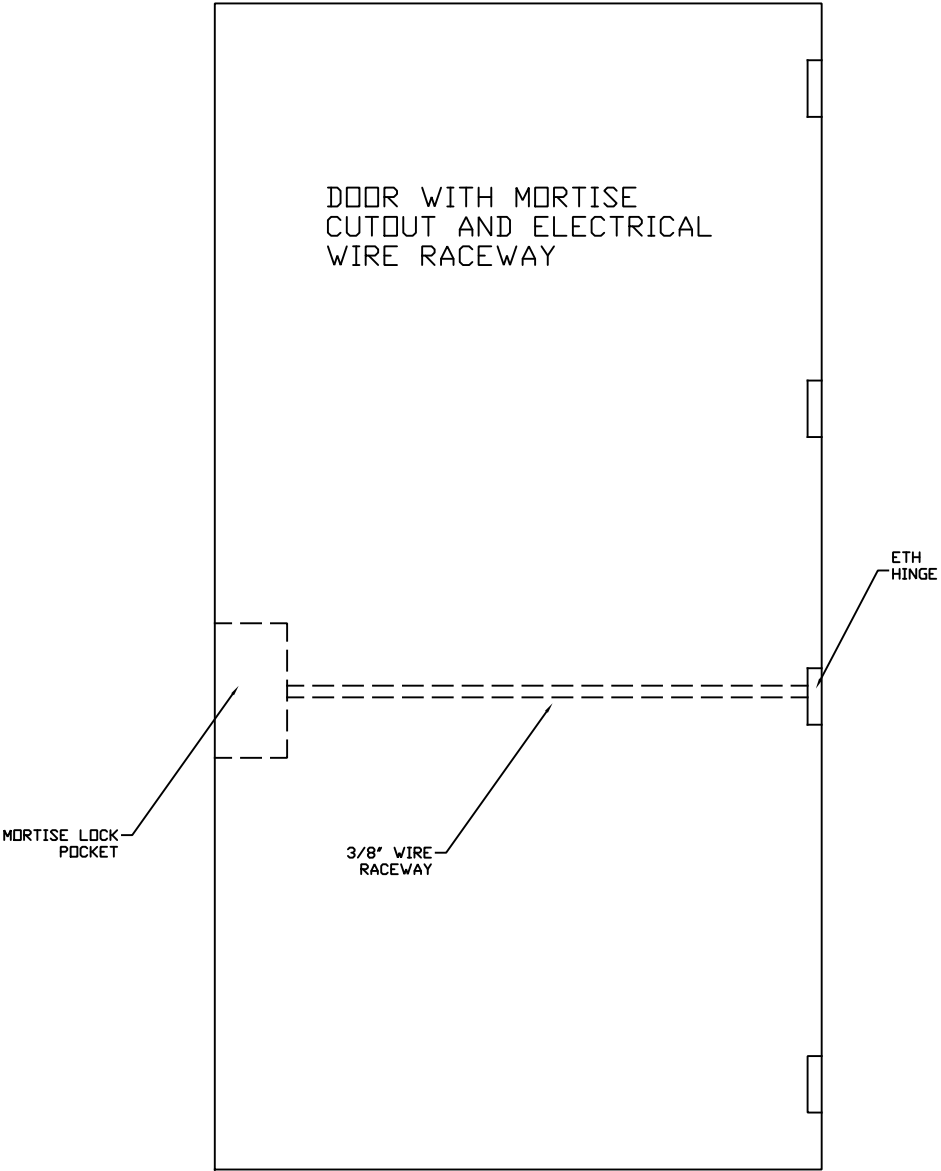
FAIL SECURE- OUTER TRIM IS UNLOCKED WHEN POWER IS APPLIED. WHEN POWER IS REMOVED THE OUTER TRIM REMAINS LOCKED.

DOOR AJAR (DAJ)- MONITORS DOOR POSITION

REQUEST FOR EXIT SWITCH (RQE)- MONITORS INSIDE LEVER POSITION

MKD- MONITORS MECHANICAL KEY OVERRIDE

PRIV- MONITORS PRIVACY (THROWING THE THUMB TURN or DEADBOLT)



MAKE CUTOUT FOR THE MORTISE PER TEMPLATE, DRILL A 3/8" WIRE RACEWAY FROM BACK OF MORTISE POCKET TO THE ELECTRICAL TRANSFER (ETH) HINGE OR DEVICE. ROUT WIRES AS NEEDED THROUGH THE RACEWAY TO THE ETH.

SEE WIRE CHART

WIRE CHART (no sensors)

COLOR	DESC
Grey	Motor -
Red	Motor +

WIRE CHART (w sensors)

COLOR	DESC
White	RQE
Yellow	DAJ
Grey	Motor -
Red	Motor +
Black	Ground
Blue	Priv
Green	MKD

INSTRUCTIONS

DATE: 10/13/21

NAME:
30X SERIES MORTISE
INSTALLATION INFO

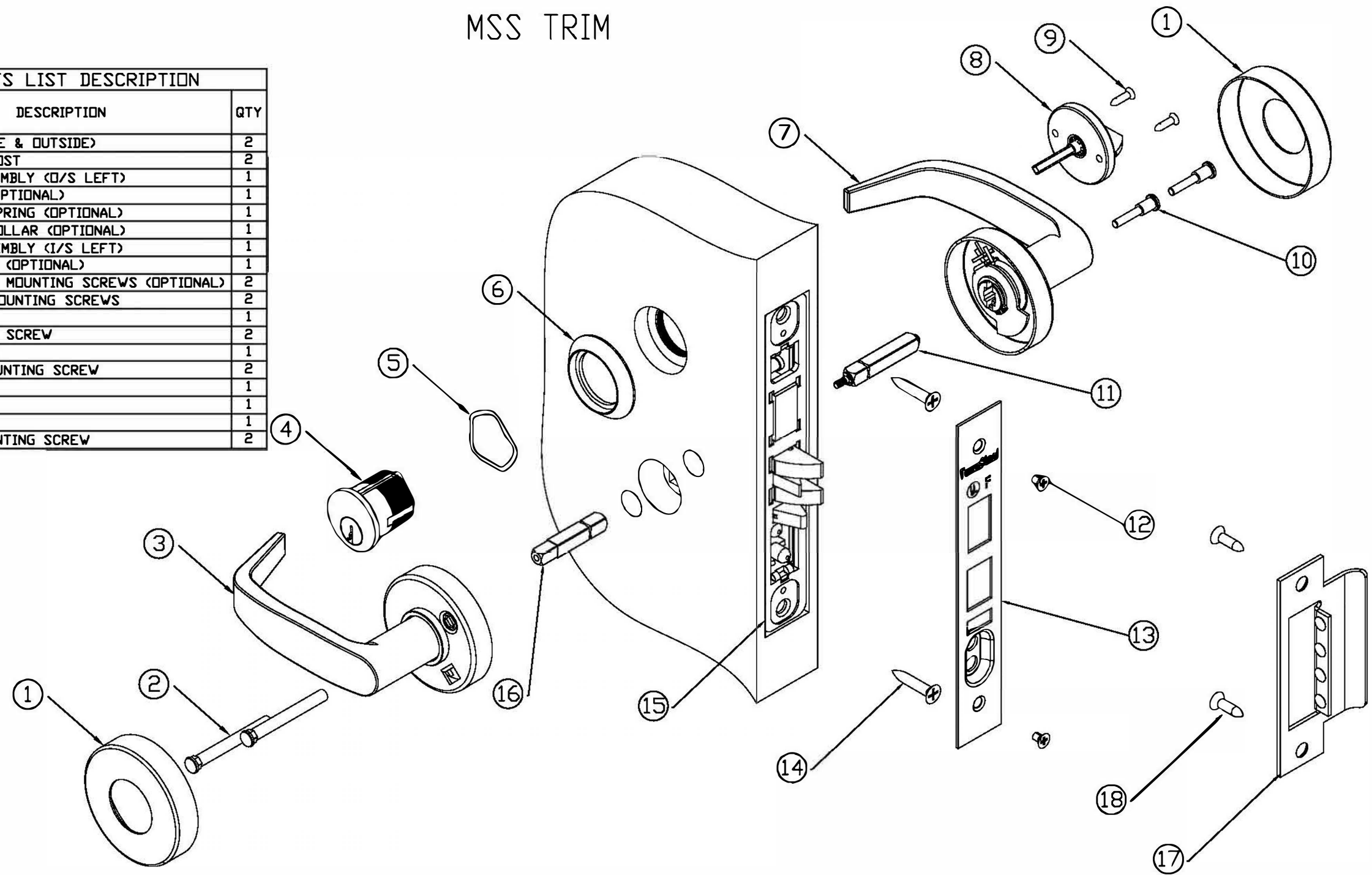
TownSteel

17901 RAILROAD ST
CITY OF INDUSTRY, CA 91748

www.townsteel.com

MSS TRIM

MSS PARTS LIST DESCRIPTION		
ITEM#	DESCRIPTION	QTY
1	ROSE (INSIDE & OUTSIDE)	2
2	MOUNTING POST	2
3	LEVER ASSEMBLY (O/S LEFT)	1
4	CYLINDER (OPTIONAL)	1
5	CYLINDER SPRING (OPTIONAL)	1
6	CYLINDER COLLAR (OPTIONAL)	1
7	LEVER ASSEMBLY (I/S LEFT)	1
8	THUMB TURN (OPTIONAL)	1
9	THUMB TURN MOUNTING SCREWS (OPTIONAL)	2
10	ASSEMBLY MOUNTING SCREWS	2
11	SPINDLE	1
12	FACE PLATE SCREW	2
13	FACE PLATE	1
14	MORTISE MOUNTING SCREW	2
15	MORTISE	1
16	SPINDLE	1
17	STRIKE	1
18	STRIKE MOUNTING SCREW	2



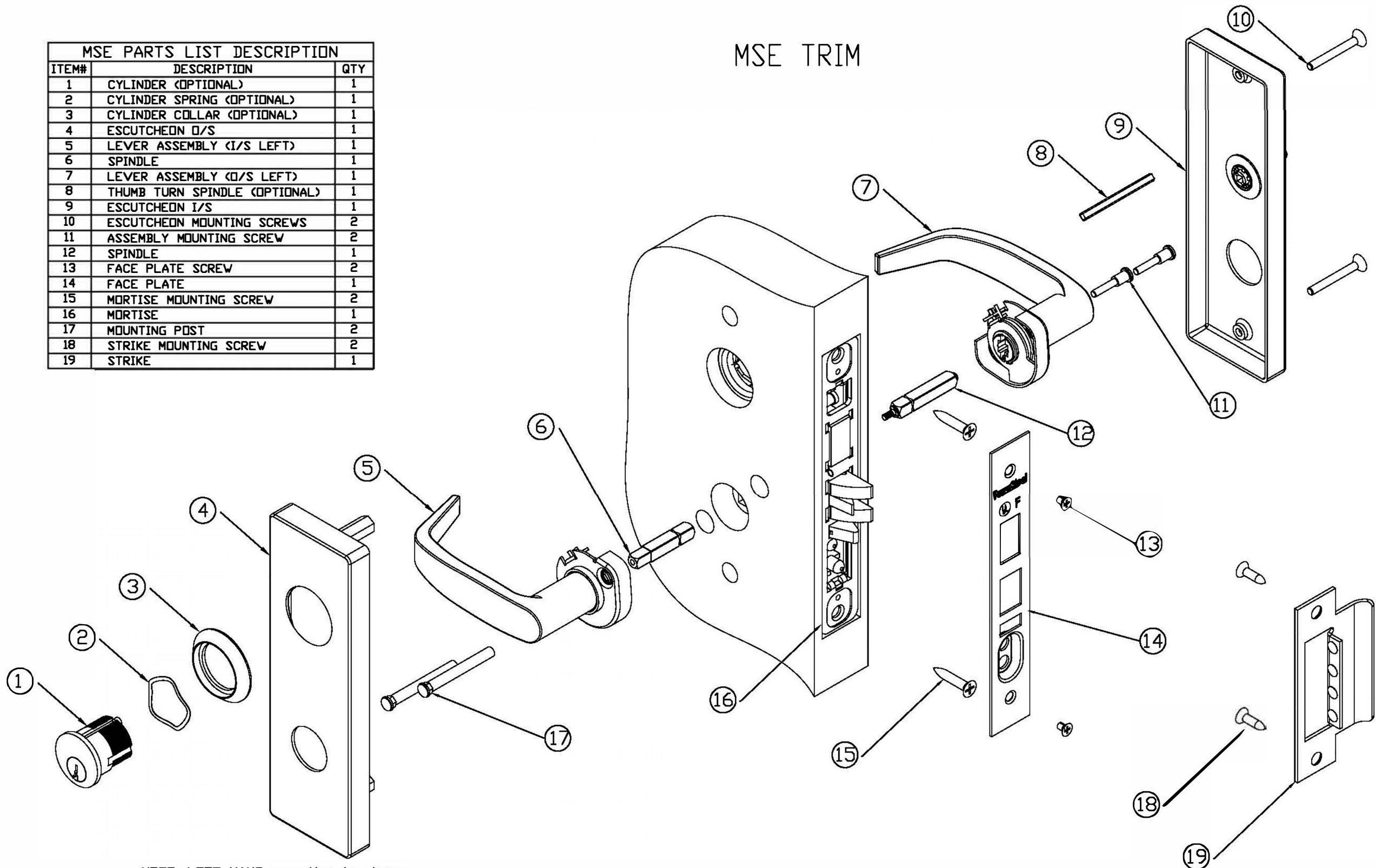
NOTE: LEFT HAND mounting is shown

- Step 1 Prepare door and jamb per supplied template
- Step 2 Install strike (Item 17) onto jamb cutout and fasten with screws (Item 18)
- Step 3 Insert mortise (Item 15) into mortise cutout and fasten to door with screws (Item 14)
- Step 4 Insert inside and outside spindles (Items 11 & 16) into the lock case hub and tighten screw
- Step 5 Insert 2 mounting posts (Item 2) into the outside lever assembly (Item 3)
- Step 6 Press rose (Item 1) onto the outside lever assembly (Item 3)
- Step 7 Position outside (O/S) lever assembly onto the mortise- line up spindle and mounting posts with mortise
- Step 8 Position inside (I/S) lever assembly (Item 7) onto the mortise- line up spindle
- Step 9 Using the 2 mounting screws (Item 10) fasten the I/S lever assembly to the O/S lever assembly
- Step 10 Press rose (Item 1) onto the inside lever assembly (Item 7)
- Step 11 Optional- Screw in cylinder (Item 4) using spring and collar (Items 5 & 6)
- Step 12 Thread cylinder to operational depth and secure with mortise set screw
- Step 13 Fasten face plate (Item 13) on using screws (Item 12)
- Step 14 Install thumb turn (Items 8 & 9) if required
- Step 15 ALWAYS CHECK OPERATION OF LOCK SET PRIOR TO LOCKING/SHUTTING DOOR
- TO CHANGE HANDING: REVERSE INSIDE & OUTSIDE LEVER ASSEMBLIES (Items 3 & 7)

INSTRUCTIONS		TownSteel 17901 RAILROAD ST CITY OF INDUSTRY, CA 91748 www.townsteel.com
DATE:	1/31/19	
NAME: ELECTRIFIED MORTISE INSTALLATION INFO		

MSE PARTS LIST DESCRIPTION		
ITEM#	DESCRIPTION	QTY
1	CYLINDER (OPTIONAL)	1
2	CYLINDER SPRING (OPTIONAL)	1
3	CYLINDER COLLAR (OPTIONAL)	1
4	ESCUTCHEON O/S	1
5	LEVER ASSEMBLY (I/S LEFT)	1
6	SPINDLE	1
7	LEVER ASSEMBLY (O/S LEFT)	1
8	THUMB TURN SPINDLE (OPTIONAL)	1
9	ESCUTCHEON I/S	1
10	ESCUTCHEON MOUNTING SCREWS	2
11	ASSEMBLY MOUNTING SCREW	2
12	SPINDLE	1
13	FACE PLATE SCREW	2
14	FACE PLATE	1
15	MORTISE MOUNTING SCREW	2
16	MORTISE	1
17	MOUNTING POST	2
18	STRIKE MOUNTING SCREW	2
19	STRIKE	1

MSE TRIM



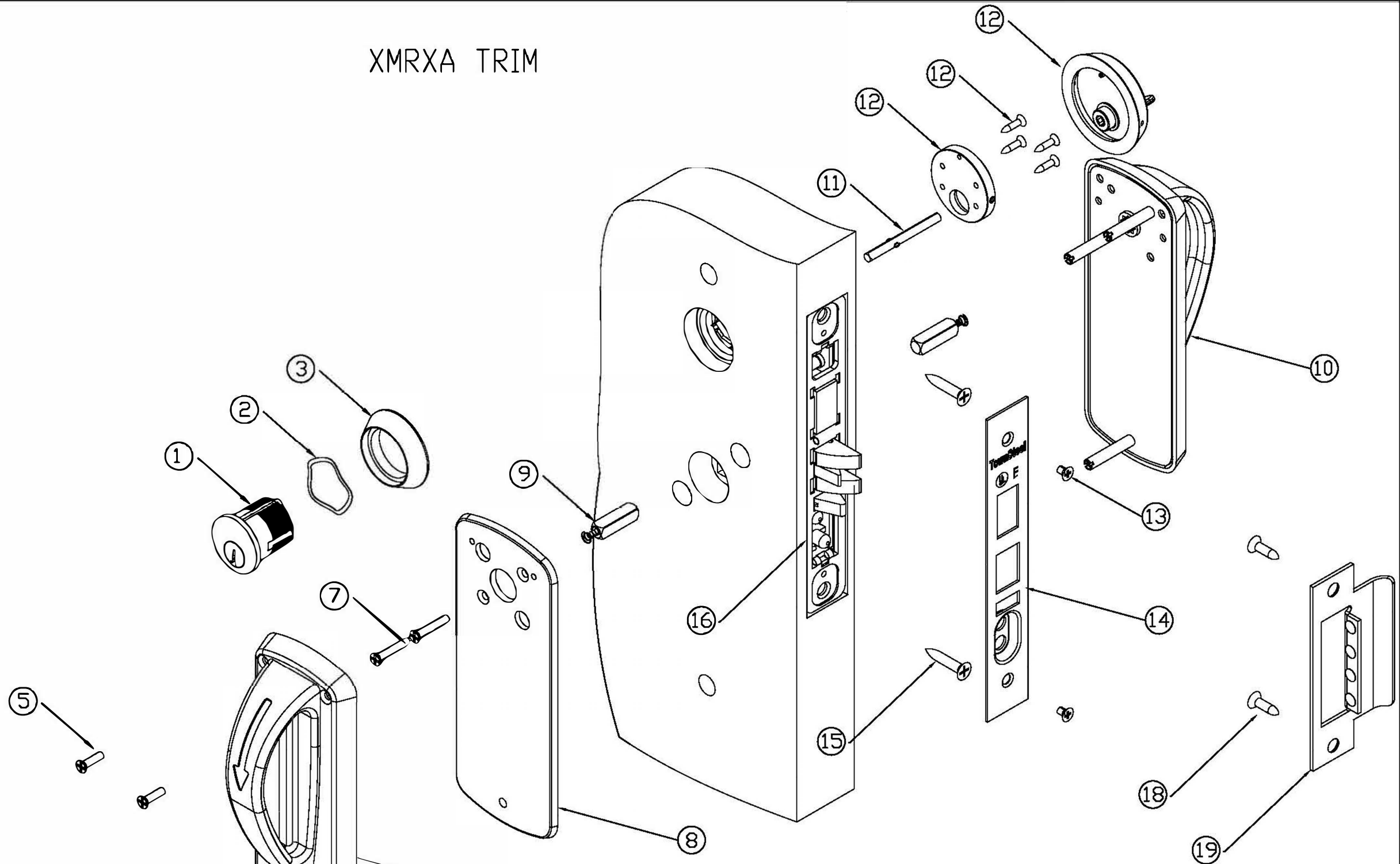
NOTE: LEFT HAND mounting is shown

- Step 1 Prepare door per supplied template
Step 2 Install strike (Item 19) onto jamb cutout and fasten with screws (Item 18)
Step 3 Insert mortise (Item 16) into mortise cutout and fasten to door with screws (Item 15)
Step 4 Insert inside and outside spindles (Items 6 & 12) into the lock case hub and tighten screw
Step 5 Insert 2 mounting posts (Item 17) into the outside lever assembly (Item 5)
Step 6 Position outside (O/S) lever assembly (Item 5) onto the mortise- line up spindle and mounting posts with mortise
Step 7 Position inside (I/S) lever assembly (Item 7) onto the mortise- line up spindle.
Step 8 Using the 2 mounting screws (Item 11) fasten the I/S lever assembly to the O/S lever assembly.
Step 9 Position thumb turn spindle (Item 8), if required, as shown between escutcheon and mortise- line up with mortise
Step 10 Install O/S & I/S Escutcheons (Items 4 & 9) over lever assemblies and fasten with screws (Item 10)
Step 11 Optional- Screw in cylinder (Item 1) using spring and collar (Items 2 & 3)
Step 12 Thread cylinder to operational depth and secure with mortise set screw
Step 13 Fasten face plate (Item 14) on using screws (Item 13)
Step 14 ALWAYS CHECK OPERATION OF LOCK SET PRIOR TO LOCKING/SHUTTING DOOR
TO CHANGE HANDING: REVERSE INSIDE & OUTSIDE LEVER ASSEMBLIES (Items 5 & 7)

INSTRUCTIONS	
DATE: 1/31/19	TownSteel
NAME: ELECTRIFIED MORTISE INSTALLATION INFO	17901 RAILROAD ST CITY OF INDUSTRY, CA 91748 www.townsteel.com

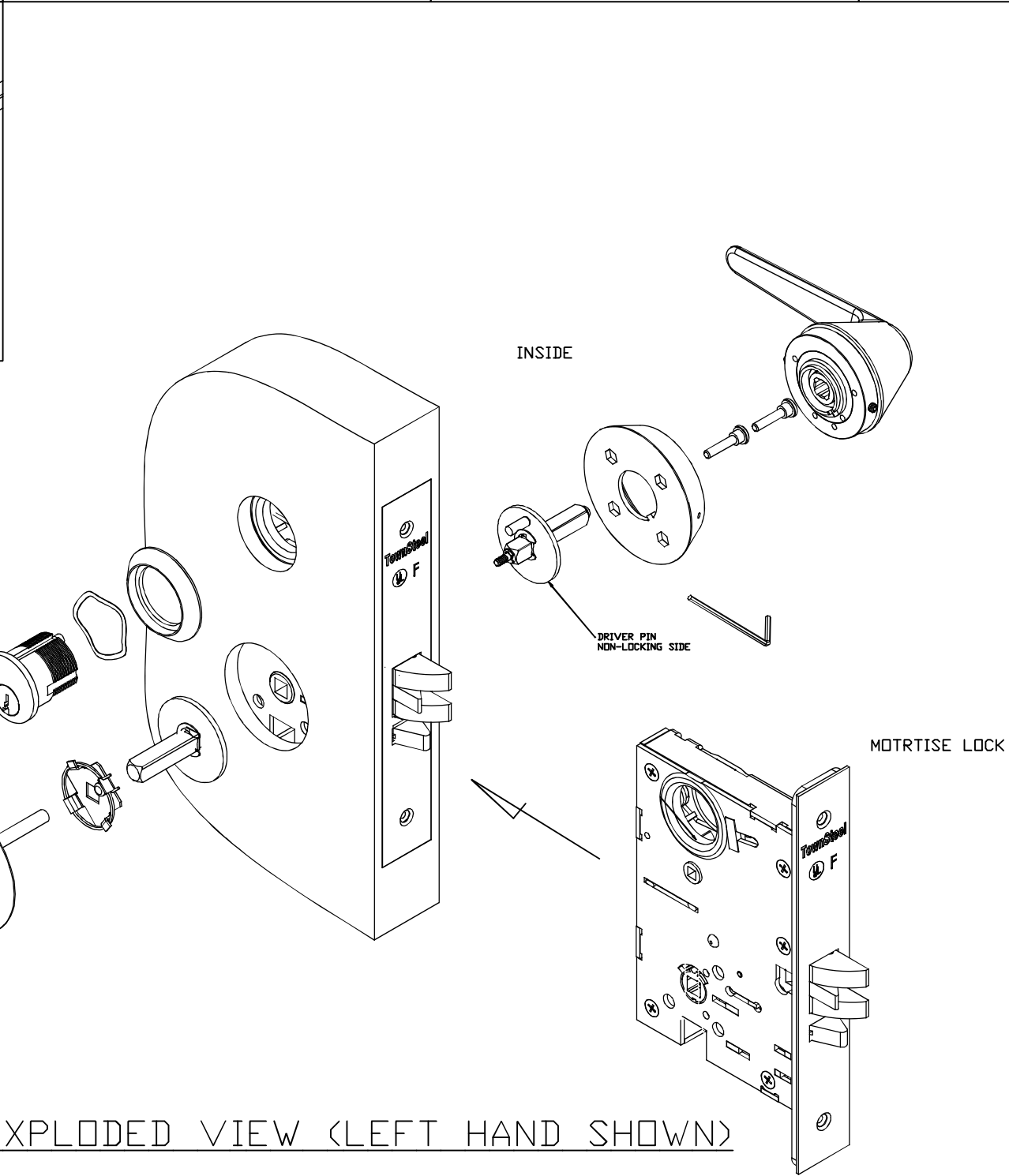
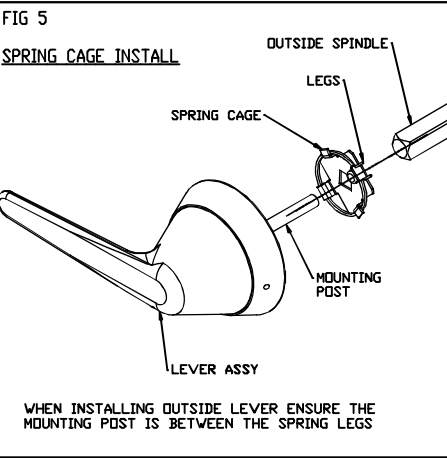
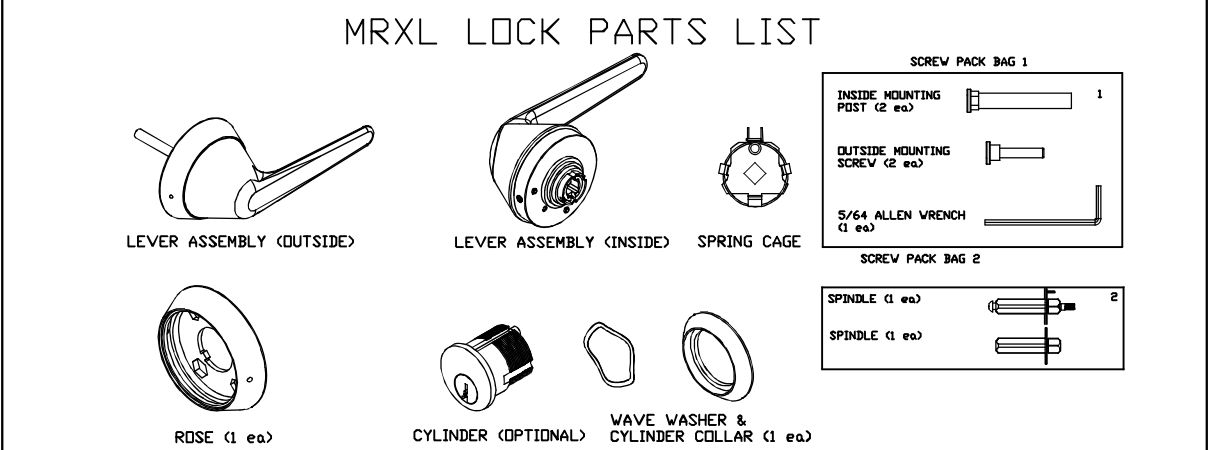
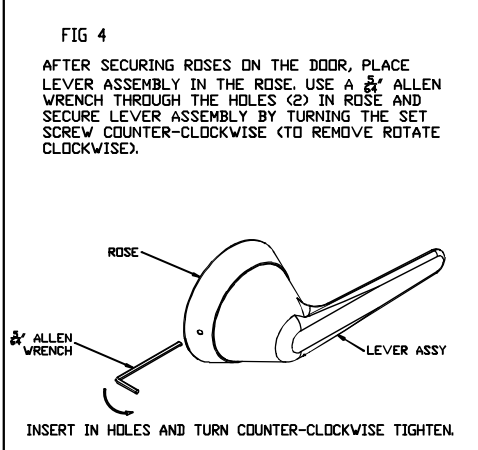
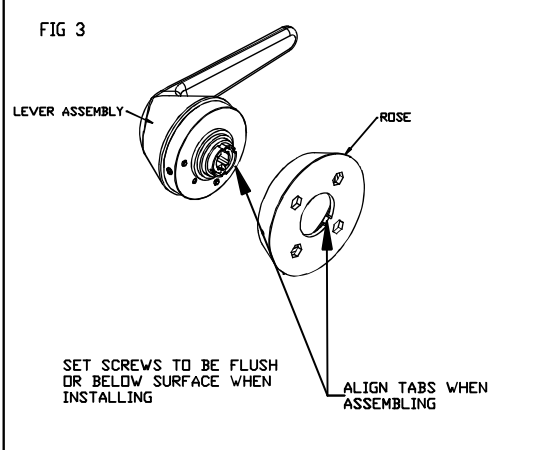
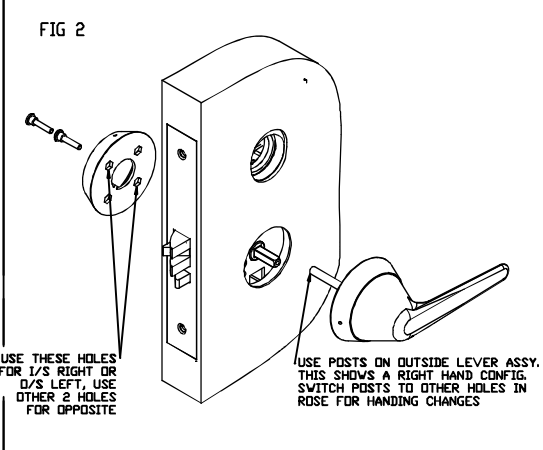
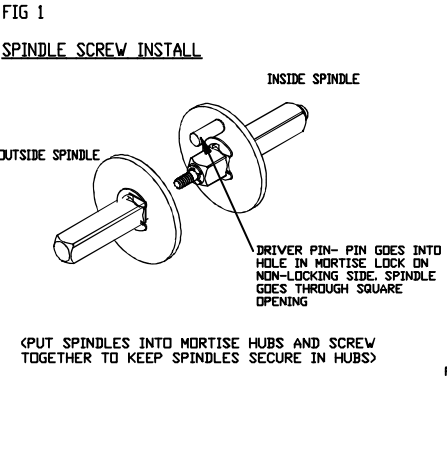
XMRXA PARTS LIST DESCRIPTION		
ITEM#	DESCRIPTION	QTY
1	CYLINDER (OPTIONAL)	1
2	CYLINDER SPRING (OPTIONAL)	1
3	CYLINDER COLLAR (OPTIONAL)	1
4	BOTTOM MOUNTING SCREW	1
5	UPPER MOUNTING SCREW	2
6	OUTER LEVER/PADDLE ASSY	1
7	PLATE MOUNTING SCREW	2
8	MOUNTING PLATE	1
9	SPINDLE	2
10	INNER LEVER/PADDLE ASSY	1
11	THUMBTURN SPINDLE (OPTIONAL)	1
12	THUMBTURN ASSY (OPTIONAL)	1
13	FACE PLATE SCREW	2
14	FACE PLATE	1
15	MORTISE MOUNTING SCREW	2
16	MORTISE	1
17	MOUNTING POST	2
18	STRIKE MOUNTING SCREW	2
19	STRIKE	1

XMRXA TRIM



- NOTE: LEFT HAND mounting is shown
- Step 1 Prepare door per supplied template
 - Step 2 Install strike (Item 19) onto jamb cutout and fasten with screws (Item 18)
 - Step 3 Insert mortise (Item 16) into mortise cutout and fasten to door with screws (Item 15)
 - Step 4 Insert inside and outside spindles (Item 9) into the lock case hub
 - Step 5 Position the inner lever/paddle assy (Item 10) onto the door- posts go thru the mortise thru holes
 - Step 6 Position mounting plate on outside (Item 8)- line up as shown- use 2 plate mounting screws (Item 7) to secure to the inner assy
 - Step 7 Position outer lever/paddle assy (Item 6) as shown- use bottom screw and upper mounting screws (Items 4 & 5) to secure
 - Step 8 Optional- Install thumbturn (Item 12) and thumbturn spindle (Item 11) as shown
 - Step 9 Optional- Screw in cylinder (Item 1) using spring and collar (Items 2 & 3)
 - Step 10 Thread cylinder to operational depth and secure with mortise set screw
 - Step 11 Fasten face plate (Item 14) on using screws (Item 13)
 - Step 12 ALWAYS CHECK OPERATION OF LOCK SET PRIOR TO LOCKING/SHUTTING DOOR
- THIS TRIM IS HANDED

INSTRUCTIONS		TownSteel 17901 RAILROAD ST CITY OF INDUSTRY, CA 91748 www.townsteel.com
DATE:	1/31/19	
NAME:		
ELECTRIFIED MORTISE INSTALLATION INFO		



MRXL SECTIONAL INSTALLATION GUIDE

1. PREPARE DOOR CUTOUT PER TEMPLATE.
 2. INSTALL MORTISE INTO THE PREPARED DOOR <SEE MORTISE INSTRUCTIONS FOR HANDING & CLUTCHING INSTRUCTIONS>.
 3. INSTALL SPINDLES IN MORTISE PER FIG 1 & EXPLODED VIEW. NOTE: DRIVER PIN IS ON THE NON-LOCKING SIDE <USUALLY INSIDE>.
 4. SLIDE THE SPRING CAGE ON THE OUTSIDE SPINDLE <SEE FIG 5>. SLIDE OUTSIDE LEVER ASSEMBLY ONTO THE MORTISE WITH POSTS GOING THROUGH THE MORTISE THROUGH HOLES AND LINED UP WITH THE SPRING CAGE LEGS. SEE FIG 2 & FIG. 5.
 5. ON THE OPPOSITE SIDE- PUT THE 2 MOUNTING SCREWS THROUGH HOLES ON THE ROSE- SEE FIG 2. ALIGN THE SCREWS WITH THE POSTS AND TIGHTEN.
 6. INSTALL THE INSIDE LEVER ASSEMBLY INTO THE ROSE- ALIGN TABS. SET SCREWS HAVE TO BE FLUSH OR BELOW THE SURFACE TO ALLOW CLEARANCE. SEE FIG 3.
- NOTE: ONCE THE LEVER ASSEMBLY IS SET ON BOTH SIDES- ROTATE THE LEVER ON BOTH SIDES TO ENSURE THE MORTISE LATCH RETRACTS AND THERE IS NO BINDING. IF THE LATCH OR LEVER BINDS REMOVE THE LEVER ASSEMBLY FROM THE MOUNTING SCREW SIDE AND LOOSEN THE MOUNTING SCREWS AND ALIGN THE ROSE WITH THE CENTER OF THE HUBS AS MUCH AS POSSIBLE UNTIL NO BINDING OCCURS. TIGHTEN THE SCREWS AND RETRY.
7. INSERT THE ALLEN WRENCH THROUGH EACH HOLE (2 IN EACH ROSE) TO ENGAGE THE SET SCREW AND SECURE THE LEVER ASSEMBLY. ROTATE COUNTERCLOCKWISE TO TIGHTEN IN THE ASSEMBLY AND ROTATE CLOCKWISE TO LOOSEN. SEE FIG 4.
 8. INSTALL CYLINDER <COLLAR, WAVE WASHER, CYLINDER> AND SECURE WITH SET SCREW <UNDER MORTISE FACE PLATE>.
 9. IMPORTANT: CHECK LOCK FOR CORRECT OPERATION BEFORE CLOSING THE DOOR.
 10. LEVER HANDING- CHANGE MOUNTING POST POSITION TO CHANGE HANDING - SEE FIG 2 FOR RH. SEE MORTISE HANDING CHANGE INSTRUCTIONS TO CHANGE MORTISE HANDING. NOTE: DRIVER PIN IN ON NON-LOCKING SIDE <SEE EXPLODED VIEW>.

TownSteel	DRAFT UNLESS OTHERWISE SPECIFIED:	B	TOLERANCES UNLESS OTHERWISE SPECIFIED:	MATERIAL: NOTED
	1° MAX		X.X (METRIC) =±0.4	HEAT TREAT: NA
	DRAWN BY:	SC	X.XX (METRIC) =±0.15	FINISH: NA
	DATE:	10/23/15	FRACTIONS = ±.8	TITLE:
			ANGLES = ±1/2°	MRXL SECTIONAL ASSY INSTRUCTIONS
			© .12	PART#: MRXL-S
			MACHINED SURFACES 125/	
			THIRD ANGLE	

THIS DRAWING AND THE INFORMATION CONTAINED THEREON OR DERIVED THEREFROM ARE THE CONFIDENTIAL PROPERTY OF TOWNSTEEL, INC. IT IS NOT TO BE REPRODUCED, OR DISCLOSED TO OTHERS, AND MAY BE USED ONLY FOR THE PURPOSE OF ENABLING THE PARTY TO WHOM IT HAS BEEN LOANED TO QUOTE ON OR FILL AN ORDER FOR TOWNSTEEL, INC., OR AS MAY BE OTHERWISE AUTHORIZED BY TOWNSTEEL, INC. IN WRITING.

FIG 1

SPINDLE SCREW INSTALL

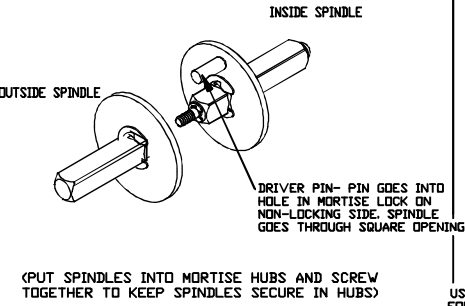


FIG 2

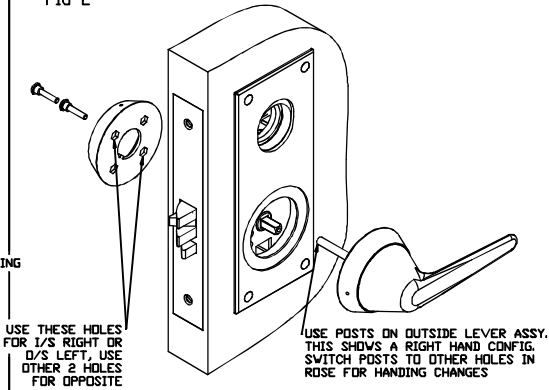


FIG 3

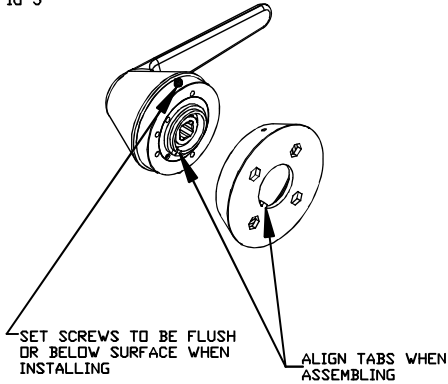
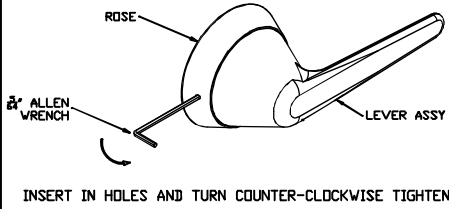


FIG 4

AFTER SECURING ROSES ON THE DOOR, PLACE LEVER ASSEMBLY IN THE ROSE. USE A 5/16" ALLEN WRENCH THROUGH THE HOLES (2) IN ROSE AND SECURE LEVER ASSEMBLY BY TURNING THE SET SCREW COUNTER-CLOCKWISE (TO REMOVE ROTATE CLOCKWISE).



REV

DESCRIPTION

DATE

MRXL-E LOCK PARTS LIST

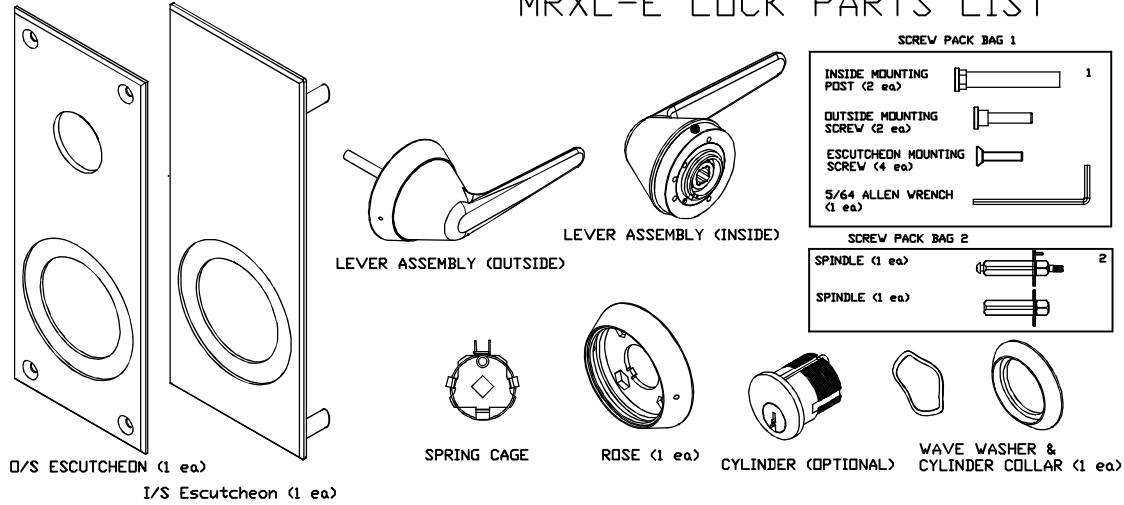
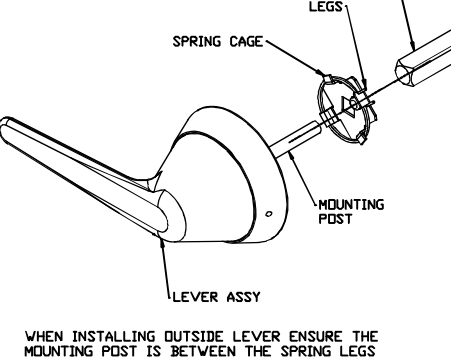
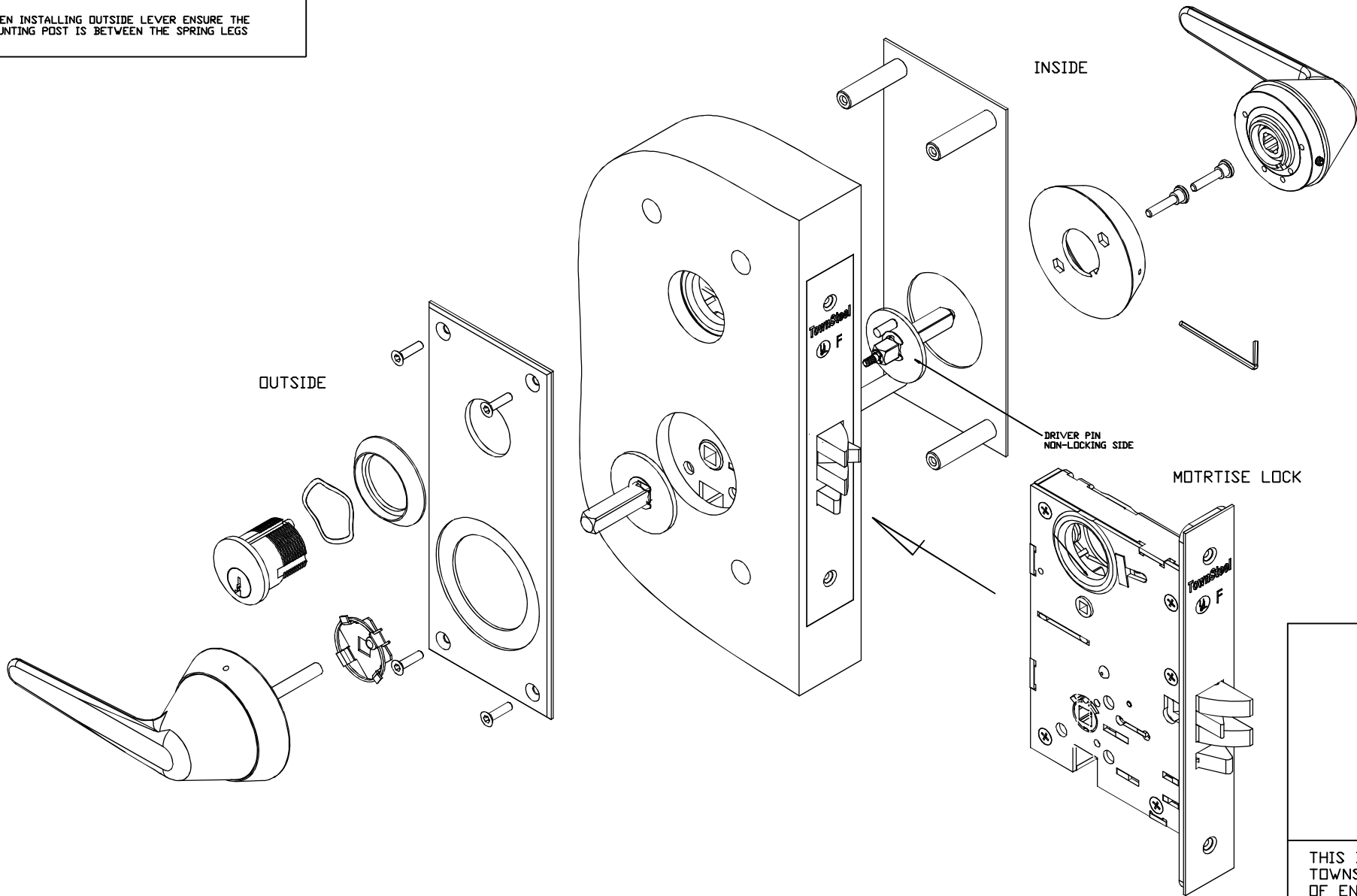


FIG 5

SPRING CAGE INSTALL



EXPLODED VIEW (LEFT HAND SHOWN)



MRXL ESCUTCHEON INSTALLATION GUIDE FOR TOWNSTEEL MORTISES

1. PREPARE DOOR CUTOUT PER TEMPLATE.
 2. INSTALL MORTISE INTO THE PREPARED DOOR (SEE MORTISE INSTRUCTIONS FOR HANDING & CLUTCHING INSTRUCTIONS).
 3. INSTALL SPINDLES IN MORTISE PER FIG 1 & EXPLODED VIEW. NOTE: DRIVER PIN IS ON THE NON-LOCKING SIDE (USUALLY INSIDE).
 4. INSTALL 1/S AND 0/S ESCUTCHEONS, USE THE 4 ESCUTCHEON MOUNTING SCREWS TO ASSEMBLE (LEAVE SCREWS LOOSE SO YOU CAN ADJUST ALIGNMENT- SEE NOTE AFTER STEP 7).
 5. SLIDE THE SPRING CAGE ON THE OUTSIDE SPINDLE (SEE FIG 5). SLIDE OUTSIDE LEVER ASSEMBLY ONTO THE MORTISE WITH POSTS GOING THROUGH THE MORTISE THROUGH HOLES AND LINED UP WITH THE SPRING CAGE LEGS. SEE FIG 2 & FIG. 5.
 6. ON THE OPPOSITE SIDE- PUT THE 2 MOUNTING SCREWS THROUGH HOLES ON THE ROSE- SEE FIG 2. ALIGN THE SCREWS WITH THE POSTS AND TIGHTEN.
 7. INSTALL THE INSIDE LEVER ASSEMBLY INTO THE ROSE- ALIGN TABS. SET SCREWS HAVE TO BE FLUSH OR BELOW THE SURFACE TO ALLOW CLEARANCE. SEE FIG 3.
- NOTE: ONCE THE LEVER ASSEMBLY IS SET ON BOTH SIDES- ROTATE THE LEVER ON BOTH SIDES TO ENSURE THE MORTISE LATCH RETRACTS AND THERE IS NO BINDING. IF THE LATCH OR LEVER BINDS REMOVE THE LEVER ASSEMBLY FROM THE MOUNTING SCREW SIDE AND LOOSEN THE MOUNTING SCREWS AND ALIGN THE ROSE WITH THE CENTER OF THE HUBS AS MUCH AS POSSIBLE UNTIL NO BINDING OCCURS. TIGHTEN THE SCREWS AND RETRY.
8. INSERT THE ALLEN WRENCH THROUGH EACH HOLE (2 IN EACH ROSE) TO ENGAGE THE SET SCREW AND SECURE THE LEVER ASSEMBLY. ROTATE COUNTERCLOCKWISE TO TIGHTEN IN THE ASSEMBLY AND ROTATE CLOCKWISE TO LOOSEN. SEE FIG 4.
 9. INSTALL CYLINDER (COLLAR, WAVE WASHER, CYLINDER) AND SECURE WITH SET SCREW (UNDER MORTISE FACE PLATE).
 10. IMPORTANT: CHECK LOCK FOR CORRECT OPERATION BEFORE CLOSING THE DOOR.
 11. LEVER HANDING- CHANGE MOUNTING POST POSITION TO CHANGE HANDING - SEE FIG 2 FOR RH. SEE MORTISE HANDING CHANGE INSTRUCTIONS TO CHANGE MORTISE HANDING. NOTE: DRIVER PIN IN ON NON-LOCKING SIDE (SEE EXPLODED VIEW).

TownSteel

17901 RAILROAD STREET
CITY OF INDUSTRY, CA 91748

DRAFT
UNLESS
OTHERWISE
SPECIFIED:
1" MAX

DRAWN BY:
SC

DATE:
10/23/15

B

TOLERANCES
UNLESS OTHERWISE
SPECIFIED:

X.X (METRIC) = ±0.4
X.XX (METRIC) = ±0.15
FRACTIONS = ±.8
ANGLES = ±1/2°
◎ .12

MACHINED SURFACES 125/
◎ THIRD ANGLE

MATERIAL: NOTED

HEAT TREAT: NA

FINISH: 32D

TITLE:
MRXL ESCUTCHEON
ASSY INSTRUCTIONS

PART#: MRXL-E

THIS DRAWING AND THE INFORMATION CONTAINED THEREON OR DERIVED THEREFROM ARE THE CONFIDENTIAL PROPERTY OF TOWNSTEEL, INC. IT IS NOT TO BE REPRODUCED, OR DISCLOSED TO OTHERS, AND MAY BE USED ONLY FOR THE PURPOSE OF ENABLING THE PARTY TO WHOM IT HAS BEEN LOANED TO QUOTE ON OR FILL AN ORDER FOR TOWNSTEEL, INC., OR AS MAY BE OTHERWISE AUTHORIZED BY TOWNSTEEL, INC. IN WRITING.

FIG 1

SPINDLE INSTALLATION

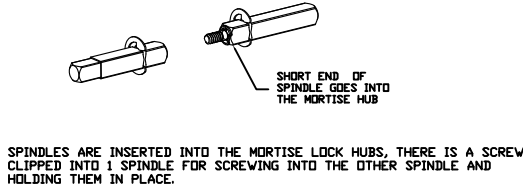


FIG 2

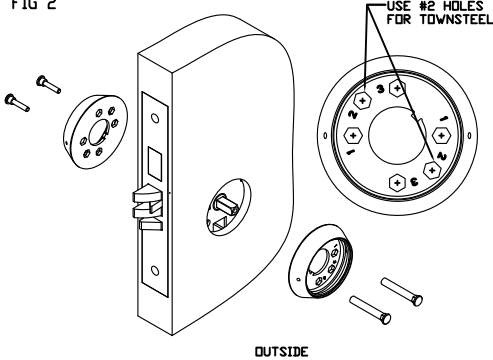


FIG 3

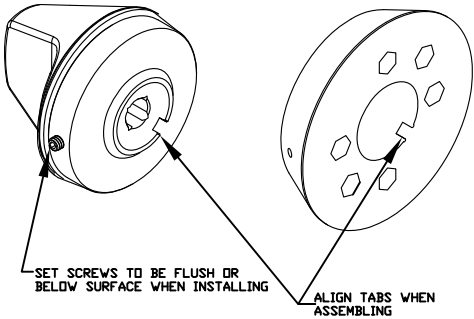
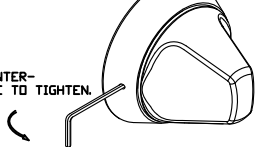


FIG 4

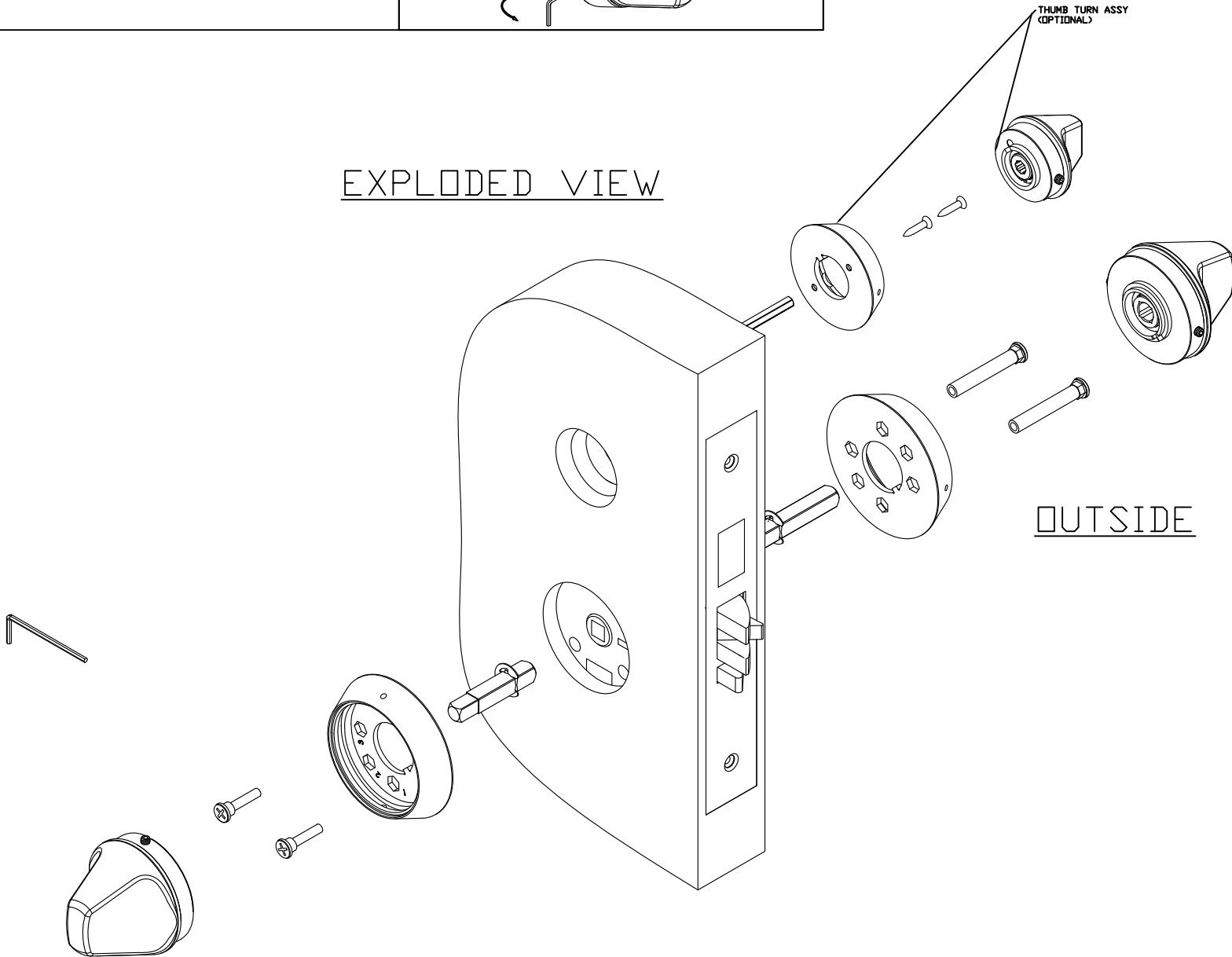
AFTER SECURING ROSES ON THE DOOR, PLACE KNOB ASSEMBLY IN ROSE. THERE ARE 2 HOLES IN THE ROSE. INSERT A 5/64TH ALLEN WRENCH IN THE SET SCREW THROUGH THE HOLE IN ROSE AND SECURE KNOB ASSEMBLY BY TURNING COUNTER-CLOCKWISE (TO REMOVE ROTATE CLOCKWISE).

NOTE: WHEN TIGHTENING BALANCE BOTH SET SCREWS (TIGHTEN EVENLY) OR BINDING MAY OCCUR.

TURN COUNTER-CLOCKWISE TO TIGHTEN.



EXPLODED VIEW



MRXK KNOB INSTALLATION GUIDE FOR TOWNSTEEL MORTISES

1. PREPARE DOOR CUTOUT PER TEMPLATE.
2. INSTALL MORTISE INTO THE PREPARED DOOR (SEE MORTISE INSTRUCTIONS FOR HANDING & INSTRUCTIONS).
3. INSTALL SPINDLES IN MORTISE PER FIG 1.
4. PLACE THE 2 INSIDE MOUNTING POSTS THROUGH HOLE NUMBER 2 AS DESIGNATED ON THE ROSE- SEE FIG 2.
5. HOLDING THE 2 POSTS IN POSITION SLIDE ONTO THE MORTISE WITH POSTS GOING THROUGH THE MORTISE THROUGH HOLES. SEE FIG 2. NOTE- CAN INSTALL THE KNOB ASSEMBLY ON THE OUTSIDE PER STEP 7 AND THIS WILL HOLD THE POSTS IN POSTION.
6. ON THE OPPOSITE SIDE- PUT THE 2 MOUNTING SCREWS THROUGH HOLES NUMBER 2 AS DESIGNATED ON THE ROSE- SEE FIG 2. ALIGN THE SCREWS WITH THE POSTS AND TIGHTEN.
7. INSTALL THE KNOB ASSEMBLY INTO THE ROSE- ALIGN TABS. SET SCREWS HAVE TO BE FLUSH OR BELOW THE SURFACE TO ALLOW CLEARANCE. SEE FIG 3.
8. NOTE: ONCE THE KNOB ASSEMBLY IS SET ON BOTH SIDES- ROTATE THE KNOB ON BOTH SIDES TO ENSURE THE MORTISE LATCH RETRACTS AND THERE IS NO BINDING. IF THE LATCH OR KNOB BINDS REMOVE THE KNOB ASSEMBLY FROM THE MOUNTING SCREW SIDE AND LOOSEN THE MOUNTING SCREWS AND ALIGN THE ROSE WITH THE CENTER OF THE MORTISE HUBS AS MUCH AS POSSIBLE UNTIL NO BINDING OCCURS. TIGHTEN THE SCREWS AND RETRY.
9. INSERT THE ALLEN WRENCH THROUGH EACH HOLE (2 IN EACH ROSE) TO ENGAGE THE SET SCREW AND SECURE THE KNOB ASSEMBLY. ROTATE COUNTERCLOCKWISE TO TIGHTEN IN THE ASSEMBLY AND ROTATE CLOCKWISE TO LOOSEN. SEE FIG 4. NOTE: WHEN TIGHTENING BALANCE BOTH SET SCREWS (TIGHTEN EVENLY) OR BINDING MAY OCCUR.
10. CHECK LOCK FOR CORRECT OPERATION BEFORE CLOSING THE DOOR.

MRXK LOCK PARTS LIST

SCREW PACK BAG	
SPINDLE CLIP (2 ea) (Installed on spindles)	1
INSIDE MOUNTING SCREW (2 ea)	
OUTSIDE MOUNTING POST (2 ea)	
5/64 ALLEN WRENCH (1 ea)	
SCREW PACK BAG	
SPINDLE (1 ea)	4
SPINDLE (1 ea)	
KNOB ROSE (2 ea)	

TownSteel 17901 RAILROAD STREET CITY OF INDUSTRY, CA 91748	DRAFT UNLESS OTHERWISE SPECIFIED: 1" MAX	B	TOLERANCES UNLESS OTHERWISE SPECIFIED: X.X (METRIC) =±0.4 X.XX (METRIC) =±0.15 FRACTIONS = ±.8 ANGLES = ±1/2° © .12 MACHINED SURFACES 125/ THIRD ANGLE	MATERIAL: NOTED
	DRAWN BY: CM			HEAT TREAT: NA
	DATE: 7/24/13			FINISH: 32D
				TITLE: MRXK ASSY INSTRUCTIONS
				PART#: MRX-S-K

THIS DRAWING AND THE INFORMATION CONTAINED THEREON OR DERIVED THEREFROM ARE THE CONFIDENTIAL PROPERTY OF TOWNSTEEL, INC. IT IS NOT TO BE REPRODUCED, OR DISCLOSED TO OTHERS, AND MAY BE USED ONLY FOR THE PURPOSE OF ENABLING THE PARTY TO WHOM IT HAS BEEN LOANED TO QUOTE ON OR FILL AN ORDER FOR TOWNSTEEL, INC., OR AS MAY BE OTHERWISE AUTHORIZED BY TOWNSTEEL, INC. IN WRITING.

FIG 1

SPINDLE INSTALLATION

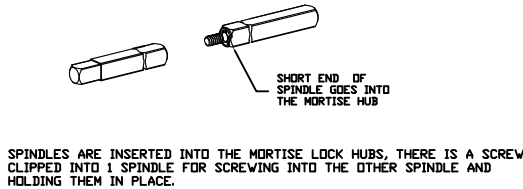


FIG 2

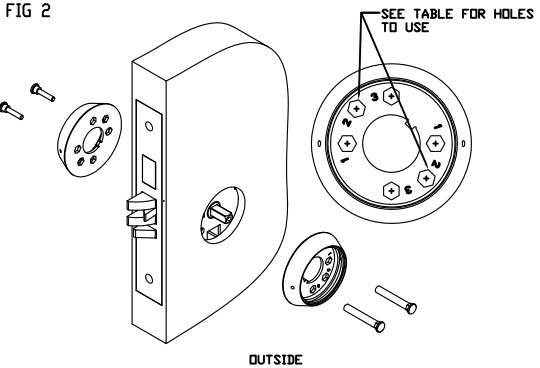


FIG 3

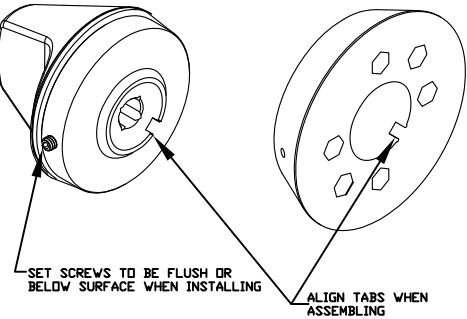
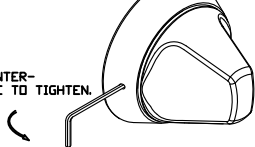


FIG 4

AFTER SECURING ROSES ON THE DOOR, PLACE KNOB ASSEMBLY IN ROSE. THERE ARE 2 HOLES IN THE ROSE. INSERT A 5/64TH ALLEN WRENCH IN THE SET SCREW THROUGH THE HOLE IN ROSE AND SECURE KNOB ASSEMBLY BY TURNING COUNTER-CLOCKWISE (TO REMOVE ROTATE CLOCKWISE).

NOTE: WHEN TIGHTENING BALANCE BOTH SET SCREWS (TIGHTEN EVENLY) OR BINDING MAY OCCUR.

TURN COUNTER-CLOCKWISE TO TIGHTEN.



RX KNOB INSTALLATION GUIDE FOR TOWNSTEEL MORTISES

1. INSTALL SPINDLES IN MORTISE PER FIG 1. INSTALL I/S & O/S ESCUTCHEONS ON THE DOOR AS SHOWN, SECURE WITH ESCUTCHEON MOUNTING SCREWS. DO NOT TIGHTEN UNTIL STEP 5.
2. PLACE THE 2 INSIDE MOUNTING POSTS THROUGH HOLE NUMBER AS DESIGNATED ON THE ROSE- SEE FIG 2 & TABLE FOR CORRECT HOLES.
3. HOLDING THE 2 POSTS IN POSITION SLIDE ONTO THE MORTISE WITH POSTS GOING THROUGH THE MORTISE THROUGH HOLES. SEE FIG 2. NOTE- CAN INSTALL THE KNOB ASSEMBLY ON THE OUTSIDE PER STEP 7 AND THIS WILL HOLD THE POSTS IN POSITION.
4. ON THE OPPOSITE SIDE- PUT THE 2 MOUNTING SCREWS THROUGH HOLES (SEE TABLE) AS DESIGNATED ON THE ROSE- SEE FIG 2. ALIGN THE SCREWS WITH THE POSTS AND TIGHTEN.
5. INSTALL THE KNOB ASSEMBLY INTO THE ROSE- ALIGN TABS. SET SCREWS HAVE TO BE FLUSH OR BELOW THE SURFACE TO ALLOW CLEARANCE. SEE FIG 3.

NOTE: ONCE THE KNOB ASSEMBLY IS SET ON BOTH SIDES- ROTATE THE KNOB ON BOTH SIDES TO ENSURE THE MORTISE LATCH RETRACTS AND THERE IS NO BINDING. IF THE LATCH OR KNOB BINDS REMOVE THE KNOB ASSEMBLY FROM THE MOUNTING SCREW SIDE AND LOOSEN THE MOUNTING SCREWS AND ALIGN THE ROSE WITH THE CENTER OF THE HUBS AS MUCH AS POSSIBLE UNTIL NO BINDING OCCURS. TIGHTEN THE SCREWS (INCLUDING ESCUTCHEON MOUNTING SCREWS) AND RETRY.

6. INSERT THE ALLEN WRENCH THROUGH EACH HOLE (2 IN EACH ROSE) TO ENGAGE THE SET SCREW AND SECURE THE KNOB ASSEMBLY. ROTATE COUNTERCLOCKWISE TO TIGHTEN IN THE ASSEMBLY AND ROTATE CLOCKWISE TO LOOSEN. SEE FIG 4. NOTE: WHEN TIGHTENING BALANCE BOTH SET SCREWS (TIGHTEN EVENLY) OR BINDING MAY OCCUR.

7. CHECK LOCK FOR CORRECT OPERATION BEFORE CLOSING THE DOOR.

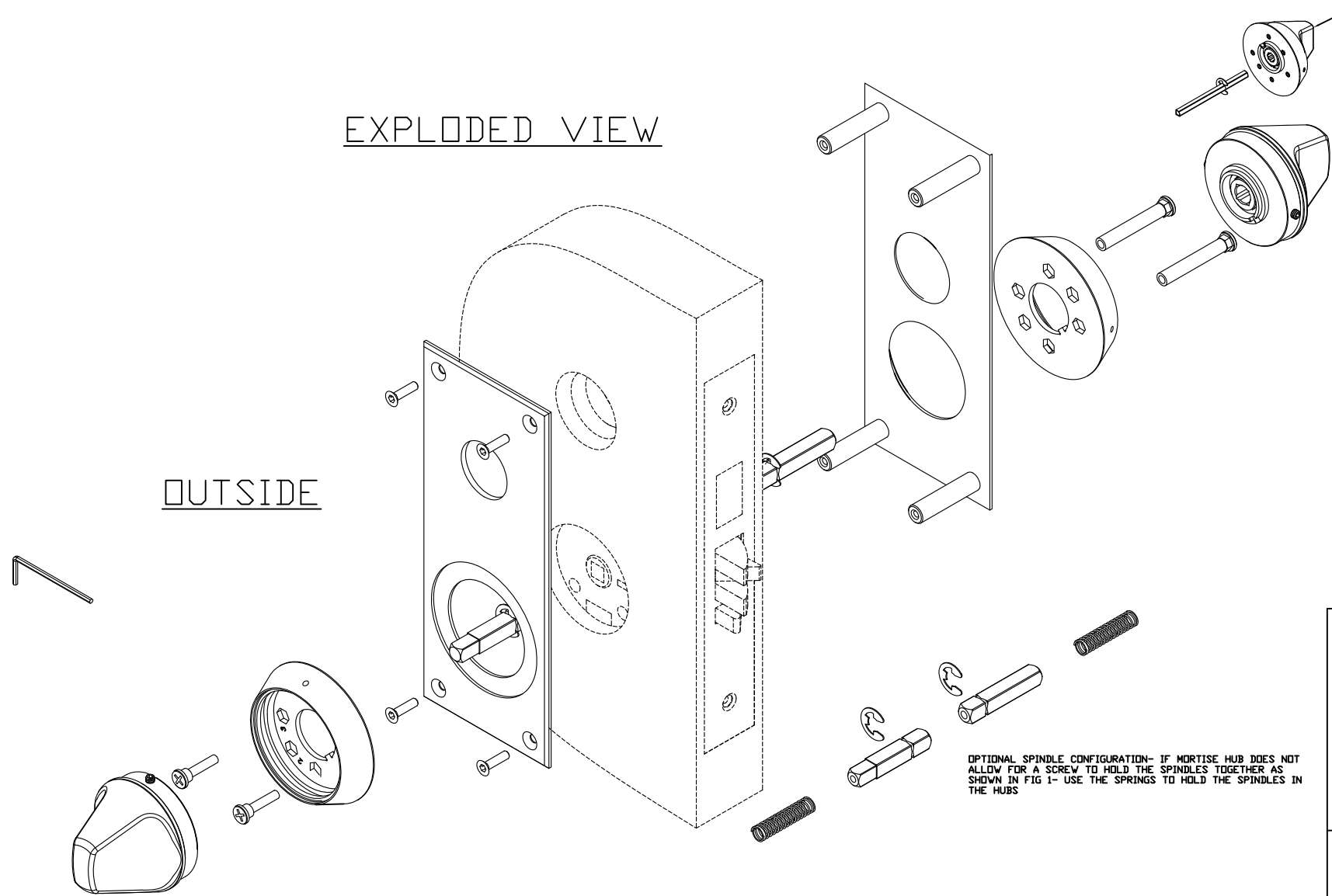
DESCRIPTION DATE

TABLE

LOCK MANUFACTURE	NUMBER ON ROSE INSERT	SCREW PACK BAG NUMBER
SCHLAGE	1	BAG 4
CORBIN	1	BAG 2
ARROW	1	BAG 2
PDQ	1	BAG 2
SARGENT	1	BAG 4
TOWNSTEEL	2	BAG 4
FALCON *	2	BAG 4
MARKS	2	BAG 4
BEST	2	BAG 4
YALE 8700	3	BAG 3
YALE 8800	3	BAG 3

* FOR FALCON LOCKS USE 2 EACH BUSHINGS (FROM THE SCREW PACK)

EXPLODED VIEW



HOSPITAL LOCK PARTS LIST

SCREW PACK BAG 1	SCREW PACK BAG 2
ESCUTCHEON MOUNTING SCREW (4 ea)	SPINDLE THREADED (1 ea)
5/64 ALLEN WRENCH (1 ea)	SPINDLE THRU HOLE (1 ea)
SPINDLE CLIP (2 ea)	
BUSHING (2 ea)	SCREW PACK BAG 3 (YALE ONLY)
INSIDE MOUNTING SCREW (2 ea)	OUTSIDE MOUNTING POST, YALE (2 ea)
OUTSIDE MOUNTING POST (2 ea)	SPINDLE THRU HOLE (1 ea)
SPINDLE SPRING (2 ea)	SPINDLE THREADED (1 ea)
SPINDLE SCREW (1 ea)	
	SCREW PACK BAG 4
	SPINDLE THREADED (1 ea)
	SPINDLE THRU HOLE (1 ea)

D/S ESCUTCHEON (1 ea) I/S Escutcheon (1 ea)

KNOB ASSEMBLY (2 ea)

KNOB ROSE (2 ea)

TownSteel

707 N. BARRANCA AVE #6
COVINA, CALIF 91723

DRAFT UNLESS OTHERWISE SPECIFIED: 1" MAX
DRAWN BY: SC
DATE: 10/19/12

TOLERANCES UNLESS OTHERWISE SPECIFIED:
X.X (METRIC) =±0.4
X.XX (METRIC) =±0.15
FRACTIONS = ±.8
ANGLES = ±1/2°
© .12
MACHINED SURFACES 125/
THIRD ANGLE

MATERIAL: NOTED
HEAT TREAT: NA
FINISH: NA
TITLE: RX REJUVENATOR, KNOB, ESCUTCHEON, ASSY INST.
PART#: RRX-E-K

THIS DRAWING AND THE INFORMATION CONTAINED THEREON OR DERIVED THEREFROM ARE THE CONFIDENTIAL PROPERTY OF TOWNSTEEL, INC. IT IS NOT TO BE REPRODUCED, OR DISCLOSED TO OTHERS, AND MAY BE USED ONLY FOR THE PURPOSE OF ENABLING THE PARTY TO WHOM IT HAS BEEN LOANED TO QUOTE ON OR FILL AN ORDER FOR TOWNSTEEL, INC., OR AS MAY BE OTHERWISE AUTHORIZED BY TOWNSTEEL, INC. IN WRITING.