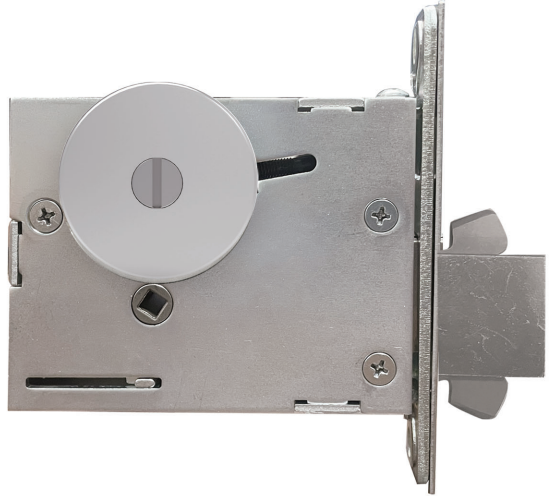


BDD Series

Barn Door Mortise Deadbolt Locks

BDD Series is a security barn door mortise deadbolt that provides a positive deterrent to forced entry. Designed for maximum security, the cylinder resists blows attempting to move the lock.



Specifications

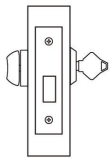
Door Thickness	1-3/8" to 2"
Backset	2-3/4" standard
Deadbolt	1" throw, stainless steel deadbolt, Anti-Saw deadbolts with hardened pins
Finish	622, 626 or special finish upon request
Cylinder	Schlage C keyway standard, or special cylinder upon request.
Handing	Non-Handed

Code Compliances

- Meets or exceeds ANSI/BHMA A156.36 Grade 1
- UL 10C 3-hour Listed

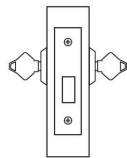
Functions

BDD 13 Single Cylinder with Thumb Turn



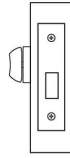
-Deadbolt projected by key from outside and thumb turn from inside

BDD 16 Double Cylinder



-Deadbolt operated from either side by key
-Use only on rooms with more than one exit

BDD 19 Thumb Turn with Blank Plate



-Deadbolt operated by thumb turn from inside and emergency release from outside.



Warranty

Limited 10 Year Warranty

How To Order	
Series	BDD: Barn Door Mortise Deadbolt Locks
Function	13: Single Cylinder with Thumb Turn 16: Double Cylinder 19: Thumb Turn with Blank Plate
Finish	622 / US19 / Flat Black 626 / US26D / Satin Chrome Or special color upon request
Cylinder	Schlage C keyway standard, or special cylinder upon request

Function Cylinder

BDD - 13 - 626 - SC

Series Finish