


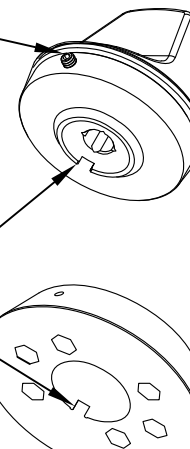
FIG 1

## SPINDLE INSTALLATION



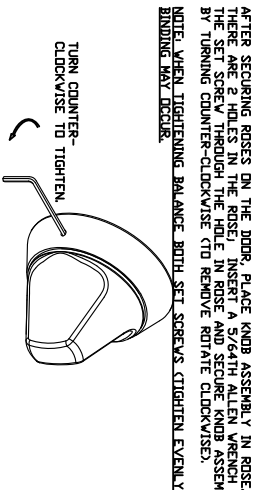
SPINDLES ARE INSERTED INTO THE MORTISE LOCK HUBS. THERE IS A SCREW CLIPPED INTO 1 SPINDLE FOR SCREWING INTO THE OTHER SPINDLE AND HOLDING THEM IN PLACE.

FIG 3



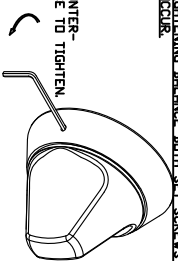
SET SCREWS TO BE FLUSH OR BELOW SURFACE WHEN INSTALLING. ALIGN TABS WHEN ASSEMBLING.

FIG 4



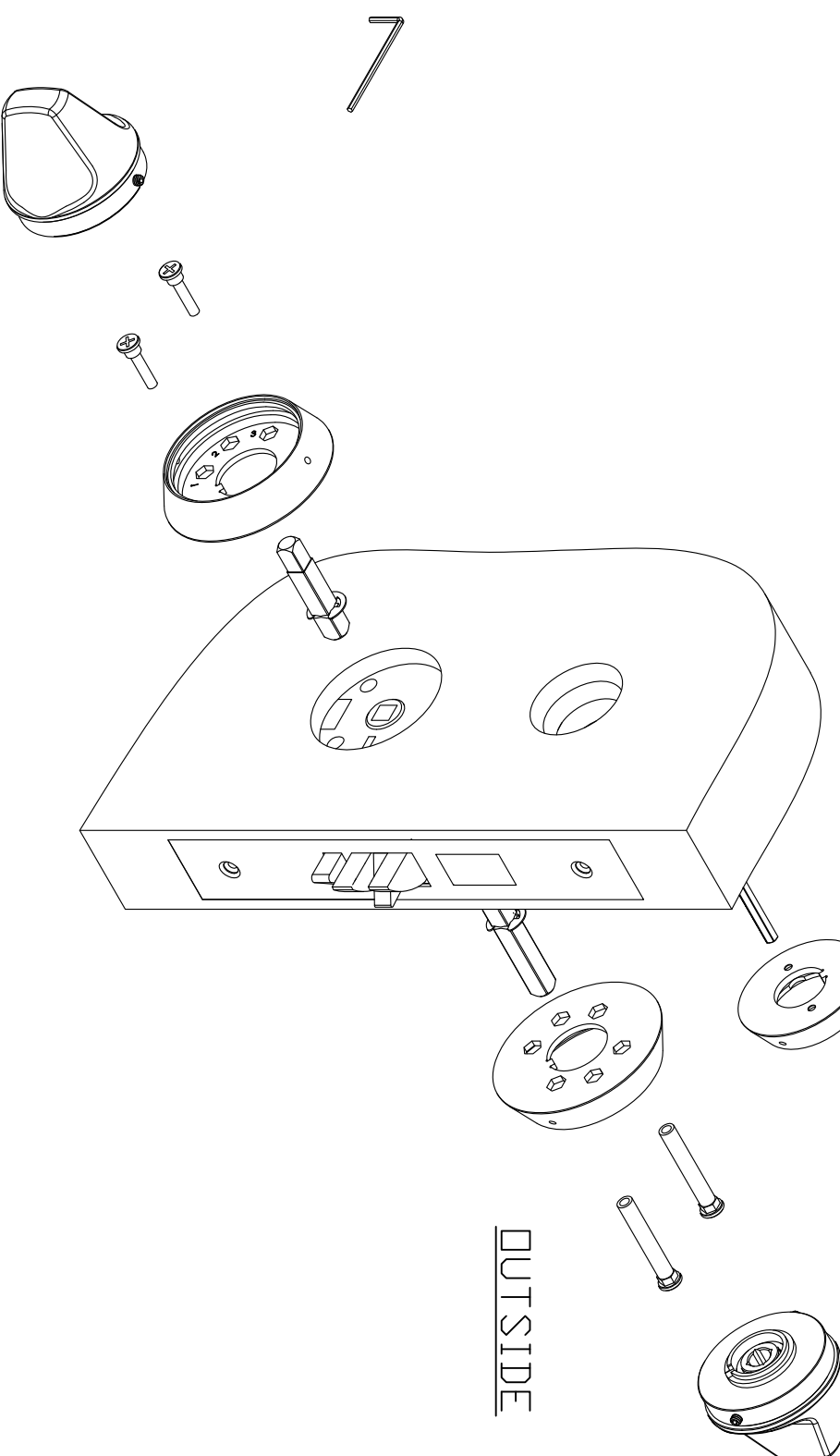
AFTER SECURING ROSES ON THE DOOR, PLACE KNOB ASSEMBLY IN ROSE. THERE ARE 2 HOLES IN THE ROSE. INSERT A 5/64TH ALLEN WRENCH IN THE SET SCREW THROUGH THE HOLE IN ROSE AND SECURE KNOB ASSEMBLY BY TURNING COUNTER-CLOCKWISE TO REMOVE ROTATE CLOCKWISE). NOTE: WHEN TIGHTENING BALANCE BOTH SET SCREWS TIGHTEN EVENLY OR BINDING MAY OCCUR.

TURN COUNTER-CLOCKWISE TO TIGHTEN



THUMB TURN ASSY (OPTIONAL)

## EXPLODED VIEW



|REV|

DESCRIPTION

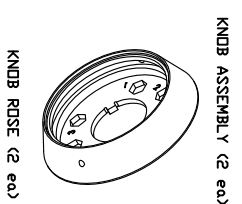
DATE

## MRXX KNOB INSTALLATION GUIDE FOR TOWNSTEEL MORTISES

1. PREPARE DOOR CUTOUP PER TEMPLATE.
2. INSTALL MORTISE INTO THE PREPARED DOOR (SEE MORTISE INSTRUCTIONS FOR HANDING & INSTRUCTIONS).
3. INSTALL SPINDLES IN MORTISE PER FIG 1.
4. PLACE THE 2 INSIDE MOUNTING POSTS THROUGH HOLE NUMBER 2 AS DESIGNATED ON THE ROSE- SEE FIG 2.
5. HOLDING THE 2 POSTS IN POSITION, SLIDE ONTO THE MORTISE WITH POSTS GOING THROUGH THE MORTISE THROUGH HOLES. SEE FIG 2. NOTE- CAN INSTALL THE KNOB ASSEMBLY ON THE OUTSIDE PER STEP 7 AND THIS WILL HOLD THE POSTS IN POSITION.
6. ON THE OPPOSITE SIDE- PUT THE 2 MOUNTING SCREWS THROUGH HOLES NUMBER 2 AS DESIGNATED ON THE ROSE- SEE FIG 2. ALIGN THE SCREWS WITH THE POSTS AND TIGHTEN.
7. INSTALL THE KNOB ASSEMBLY INTO THE ROSE- ALIGN TABS. SET SCREWS HAVE TO BE FLUSH OR BELOW THE SURFACE TO ALLOW CLEARANCE. SEE FIG 3.
8. NOTE: ONCE THE KNOB ASSEMBLY IS SET ON BOTH SIDES- ROTATE THE KNOB ON BOTH SIDES TO ENSURE THE MORTISE LATCH RETRACTS AND THERE IS NO BINDING. IF THE LATCH OR KNOB BINDS REMOVE THE KNOB ASSEMBLY FROM THE MOUNTING SCREW SIDE AND LOOSEN THE MOUNTING SCREWS AND ALIGN THE ROSE WITH THE CENTER OF THE MORTISE HUBS AS MUCH AS POSSIBLE UNTIL NO BINDING OCCURS. TIGHTEN THE SCREWS AND RETRY.
9. INSERT THE ALLEN WRENCH THROUGH EACH HOLE (2 IN EACH ROSE) TO ENGAGE THE SET SCREW AND SECURE THE KNOB ASSEMBLY. ROTATE COUNTERCLOCKWISE TO TIGHTEN IN THE ASSEMBLY AND ROTATE CLOCKWISE TO LOOSEN. SEE FIG 4. NOTE: WHEN TIGHTENING BALANCE BOTH SET SCREWS (TIGHTEN EVENLY) OR BINDING MAY OCCUR.
10. CHECK LOCK FOR CORRECT OPERATION BEFORE CLOSING THE DOOR.

## MRXX LOCK PARTS LIST

SCREW PACK BAG	
1	SPINDLE CLIP (2 ea) (Installed on spindles)
1	INSIDE MOUNTING SCREW (2 ea)
1	OUTSIDE MOUNTING POST (2 ea)
1	5/64 ALLEN WRENCH
4	SPINDLE (1 ea)
4	SPINDLE (1 ea)



KNOB ASSEMBLY (2 ea)

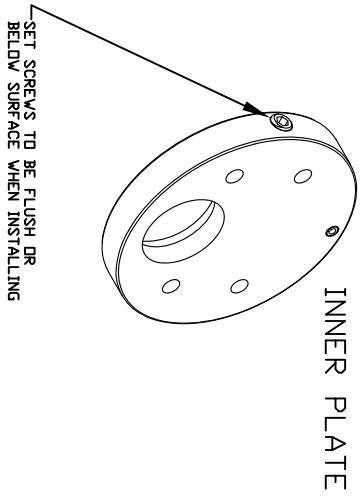
KNOB ROSE (2 ea)

B		TOLERANCES UNLESS OTHERWISE SPECIFIED:		MATERIAL NOTED	
DRAFT UNLESS OTHERWISE SPECIFIED:	1° MAX	XX (METRIC) = ±0.4	XX (METRIC) = ±0.15	HEAT TREAT:	NA
DRAWN BY:	CM	FRACTIONS = ±.8	ANGLES = ±1/2°	FINISH:	32D
DATE:	7/24/13	MACHINED SURFACES 125/	.12	TITLE:	MRXX ASSY INSTRUCTIONS
		THIRD ANGLE		PART#:	MRX-S-K

TownSteel  
17901 RAILROAD STREET  
CITY OF INDUSTRY, CA 91748

THIS DRAWING AND THE INFORMATION CONTAINED THEREON OR DERIVED THEREFROM ARE THE CONFIDENTIAL PROPERTY OF TOWNSTEEL, INC. IT IS NOT TO BE REPRODUCED, OR DISCLOSED TO OTHERS, AND MAY BE USED ONLY FOR THE PURPOSE OF ENABLING THE PARTY TO WHOM IT HAS BEEN LOANED TO QUOTE ON OR FILL AN ORDER FOR TOWNSTEEL, INC., OR AS MAY BE OTHERWISE AUTHORIZED BY TOWNSTEEL, INC. IN WRITING.

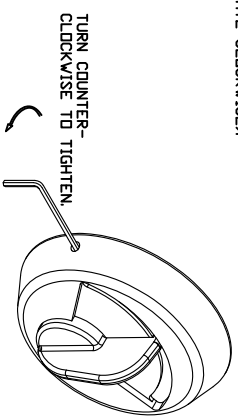
FIG 1



INNER PLATE

FIG 2

IN BOTH HOLES IN THE THUMB TURN, PLACE A 5/64TH ALLEN WRENCH (PROVIDED) THROUGH THE HOLE IN THE SET SCREW IN THE INNER PLATE AND SECURE THE THUMB TURN BY TURNING COUNTER-CLOCKWISE (TO REMOVE ROTATE CLOCKWISE).



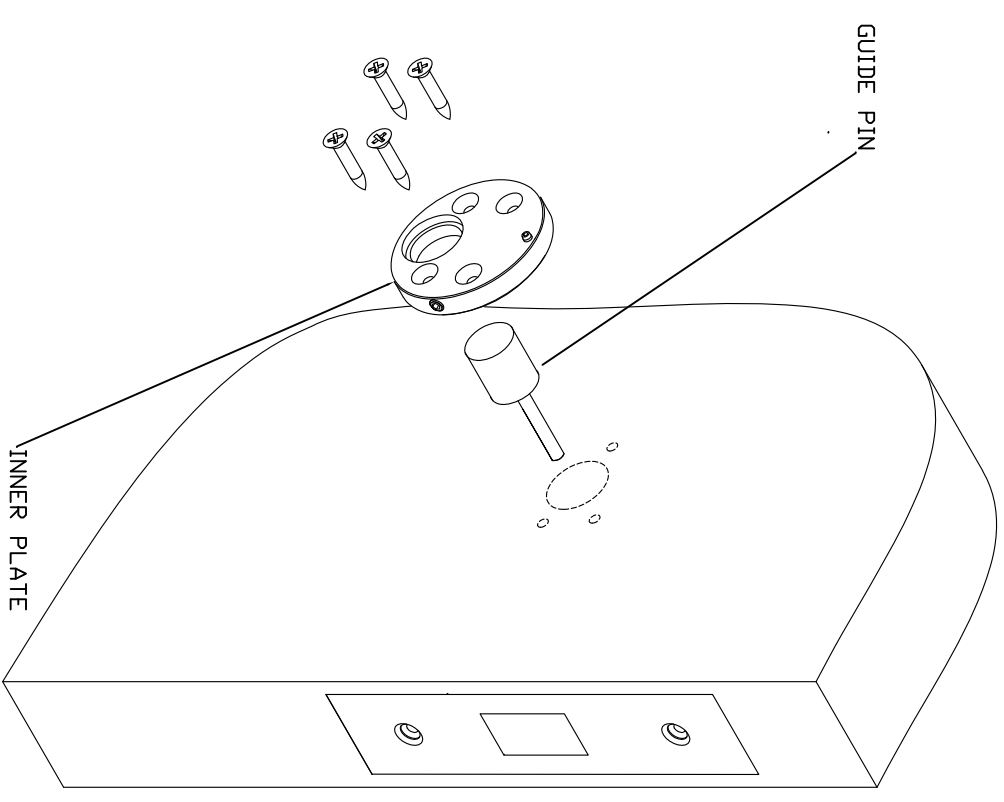
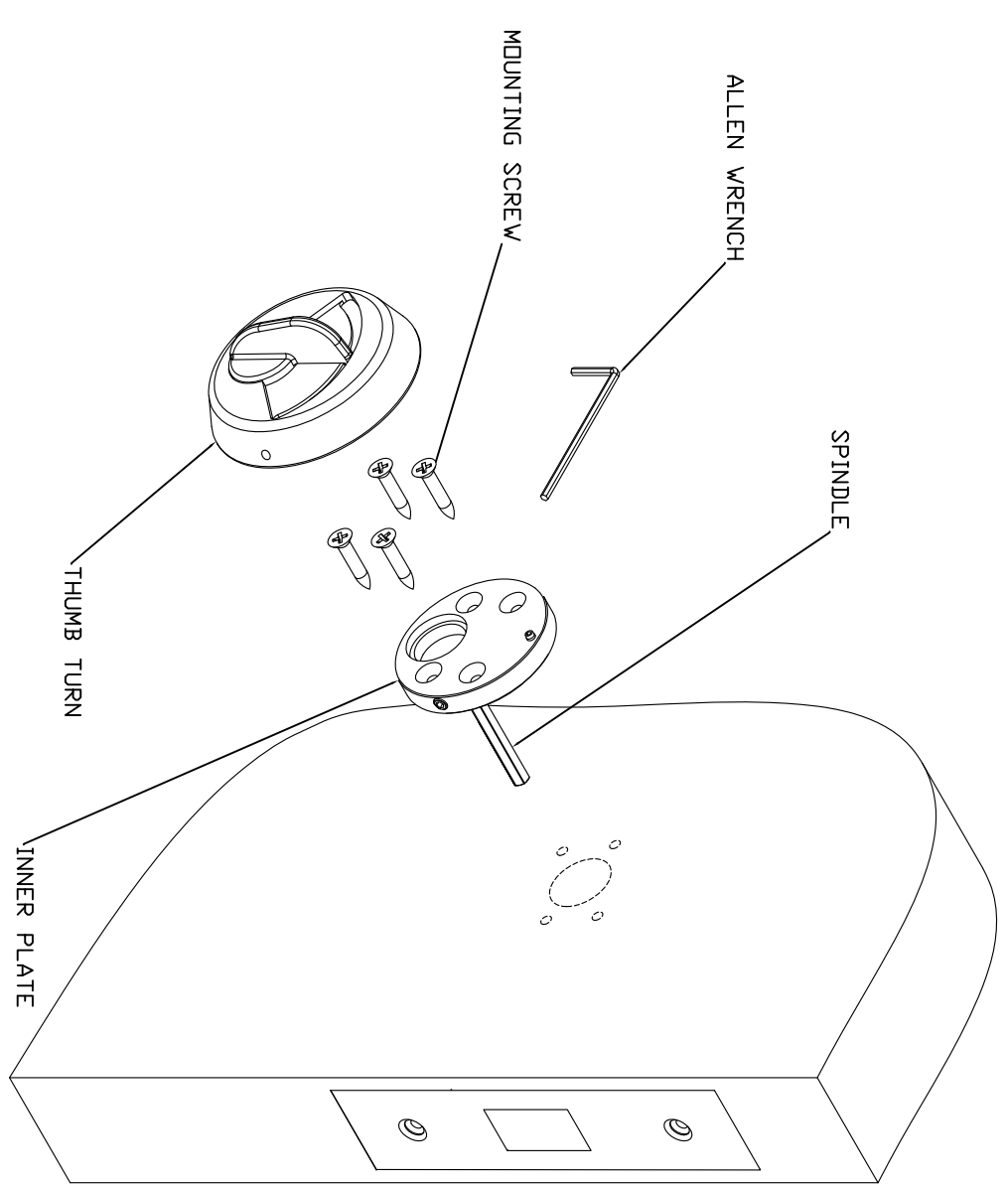
REV

DESCRIPTION

DATE

EXPLODED VIEW

USING GUIDE PIN TO ALIGN INNER PLATE



HOSPITAL THUMB TURN INSTRUCTIONS

1. PREPARE DOOR PER TEMPLATE.
2. USE THE GUIDE PIN TO HELP ALIGN THE INNER PLATE. MATCH DRILL (OR MARK LOCATION AND DRILL) THE 4 HOLES TO MOUNT THE INNER PLATE. PILOT HOLE SIZE FOR #6 SCREW IN A WOOD DOOR IS  $\frac{3}{4}$ ".
3. MOUNT THE INNER PLATE WITH THE 4 SCREWS.
4. INSTALL THE SPINDLE AND THUMB TURN (SEE EXPLODED VIEW).
5. OPERATE THE LOCK TO ENSURE PROPER INSTALLATION AND ALIGNMENT.
6. TIGHTEN THE THUMB TURN ONTO THE INNER PLATE- SEE FIG 1 & 2. INSERT THE ALLEN WRENCH THROUGH EACH HOLE (2 IN EACH INNER PLATE) TO ENGAGE THE SET SCREW AND SECURE THE THUMB TURN ASSEMBLY. ROTATE COUNTERCLOCKWISE TO TIGHTEN IN THE ASSEMBLY AND ROTATE CLOCKWISE TO LOOSEN. SEE FIG 1 & 2.
7. CHECK LOCK FOR CORRECT OPERATION BEFORE CLOSING THE DOOR.

<p><b>TownSteel</b> 707 N. BARRANCA AVE #6 Covina, CALIF 91723</p>		<p>DRAFT UNLESS OTHERWISE SPECIFIED: 1" MAX</p>	<p>B</p>	<p>TOLERANCES UNLESS OTHERWISE SPECIFIED: XX (METRIC) = ±0.4 XXX (METRIC) = ±0.15 FRACTIONS = ±.8 ANGLES = ±1/2° MACHINED SURFACES 125/ THIRD ANGLE</p>	<p>MATERIAL: NOTED HEAT TREAT: NA</p>
<p>DATE: 10/7/11</p>	<p>DRAWN BY: SC</p>	<p>FINISH: 32D</p>	<p>TITLE: ADA THUMB TURN ASSY INSTRUCTIONS</p>	<p>PART#: ADA-TTURN</p>	<p>THIS DRAWING AND THE INFORMATION CONTAINED THEREON OR DERIVED THEREFROM ARE THE CONFIDENTIAL PROPERTY OF TOWNSTEEL, INC. IT IS NOT TO BE REPRODUCED, OR DISCLOSED TO OTHERS, AND MAY BE USED ONLY FOR THE PURPOSE OF ENABLING THE PARTY TO WHOM IT HAS BEEN LOANED TO QUOTE ON OR FILL AN ORDER FOR TOWNSTEEL, INC., OR AS MAY BE OTHERWISE AUTHORIZED BY TOWNSTEEL, INC. IN WRITING.</p>

# INSTALLATION GUIDE FOR ELECTRIFIED MORTISES - SOLENOID ONLY

## INSTRUCTIONS

1. PREPARE MORTISE POCKET IN DOOR PER TEMPLATE. ACCESS FOR THE WIRING TO BE PER INSTALLERS REQUIREMENTS. IT IS RECOMMENDED THAT AN ACCESS CHANNEL IS BORED TO PROVIDE CONTACT FROM THE ELECTRIC TRANSFER HINGE OR OTHER MEANS OF TRANSFER TO THE MORTISE POCKET.
2. CONNECT WIRES AS NECESSARY AND SLIP THE MORTISE INTO THE PREPARED POCKET IN THE DOOR. TAKE CARE TO ENSURE WIRES ARE NOT PINCHED OR DAMAGED. NOTE: IT IS RECOMMENDED THAT ALL WIRING BE DONE BY A LICENSED ELECTRICIAN FAMILIAR WITH THE SUPPORTING EQUIPMENT.
3. ALWAYS ENSURE DOOR OPERATES PROPERLY BEFORE LOCKING.

## SPECIFICATIONS:

SOLENOID (SPECIFIED BY MODEL NUMBER):

24VDC	114.7+10%-0 Ω	WIRE SIZE	24AWG	OPERATE AT	24VDC±10%
12VDC	28.8+10%-0 Ω	WIRE SIZE	24AWG	OPERATE AT	12VDC±10%

## TERMS

FAIL SECURE- OUTER TRIM IS UNLOCKED WHEN POWER IS APPLIED. WHEN POWER IS REMOVED THE OUTER TRIM REMAINS LOCKED.

FAIL SAFE- OUTER TRIM IS LOCKED WHEN POWER IS APPLIED. WHEN POWER IS REMOVED THE OUTER TRIM REMAINS UNLOCKED.

