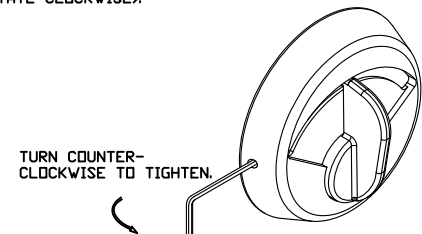
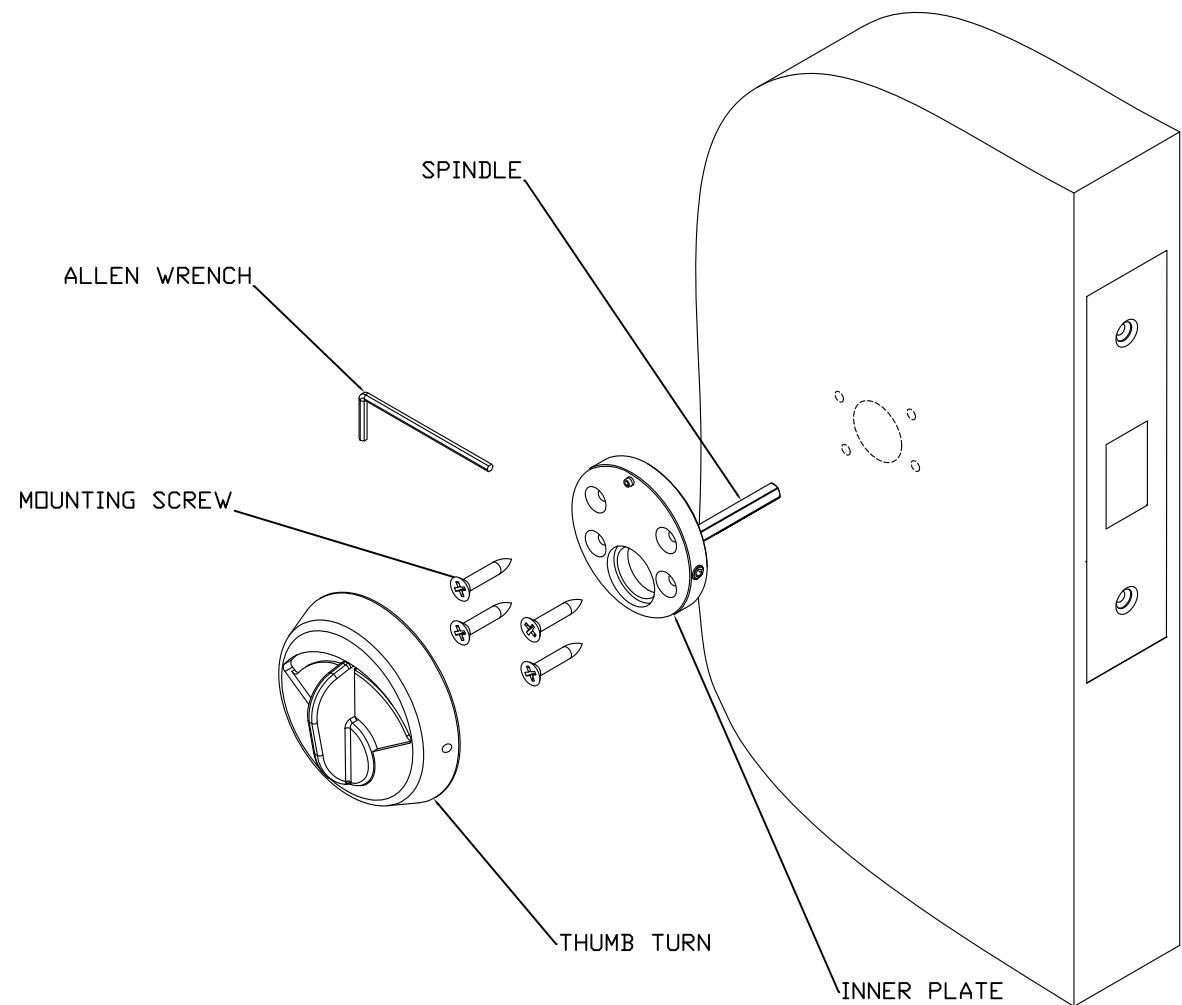


FIG 2

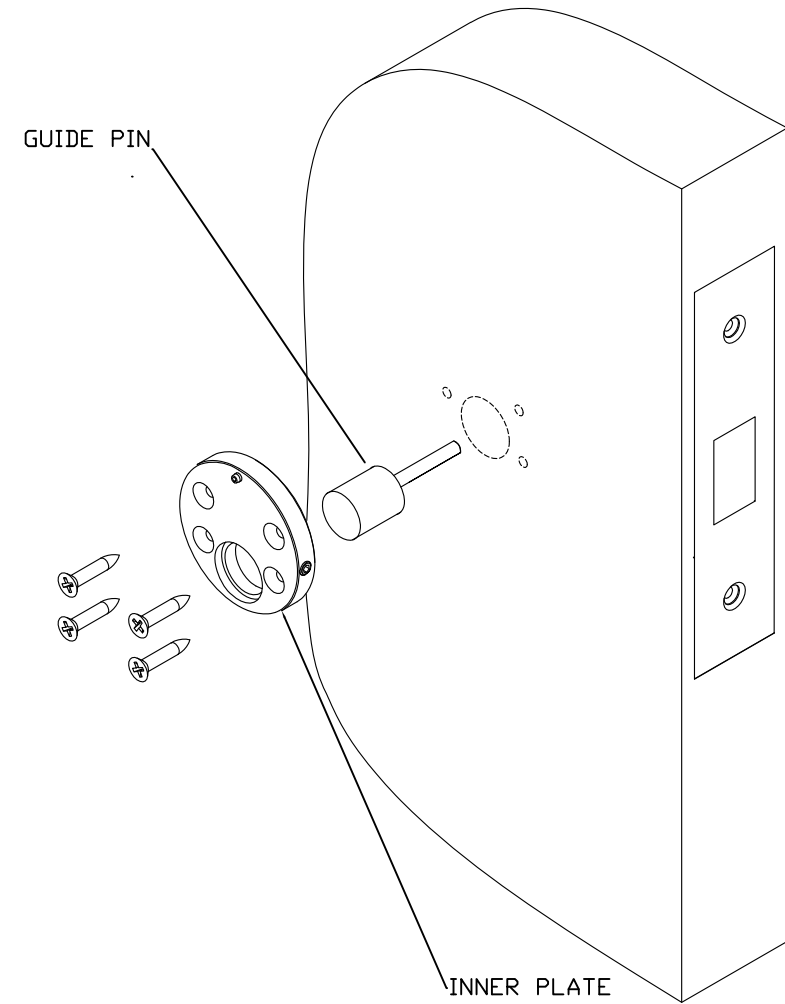
IN BOTH HOLES IN THE THUMB TURN, PLACE A 5/64TH ALLEN WRENCH (PROVIDED) THROUGH THE HOLE IN THE SET SCREW IN THE INNER PLATE AND SECURE THE THUMB TURN BY TURNING COUNTER-CLOCKWISE (TO REMOVE ROTATE CLOCKWISE).



EXPLODED VIEW



USING GUIDE PIN TO ALIGN INNER PLATE



HOSPITAL THUMB TURN INSTRUCTIONS

1. PREPARE DOOR PER TEMPLATE.
2. USE THE GUIDE PIN TO HELP ALIGN THE INNER PLATE. MATCH DRILL (OR MARK LOCATION AND DRILL) THE 4 HOLES TO MOUNT THE INNER PLATE. PILOT HOLE SIZE FOR #6 SCREW IN A WOOD DOOR IS $\frac{3}{16}$ ".
3. MOUNT THE INNER PLATE WITH THE 4 SCREWS.
4. INSTALL THE SPINDLE AND THUMB TURN (SEE EXPLODED VIEW).
5. OPERATE THE LOCK TO ENSURE PROPER INSTALLATION AND ALIGNMENT.
6. TIGHTEN THE THUMB TURN ONTO THE INNER PLATE- SEE FIG 1 & 2. INSERT THE ALLEN WRENCH THROUGH EACH HOLE (2 IN EACH INNER PLATE) TO ENGAGE THE SET SCREW AND SECURE THE THUMB TURN ASSEMBLY. ROTATE COUNTERCLOCKWISE TO TIGHTEN IN THE ASSEMBLY AND ROTATE CLOCKWISE TO LOOSEN. SEE FIG 1 & 2.
7. CHECK LOCK FOR CORRECT OPERATION BEFORE CLOSING THE DOOR.

<p>TownSteel</p> <p>707 N. BARRANCA AVE #6 COVINA, CALIF 91723</p>	DRAFT UNLESS OTHERWISE SPECIFIED: 1° MAX	<p>TOLERANCES UNLESS OTHERWISE SPECIFIED:</p> <p>X.X (METRIC) = ±0.4 X.XX (METRIC) = ±0.15 FRACTIONS = ±.8 ANGLES = ±1/2° © .12 MACHINED SURFACES 125/ THIRD ANGLE</p>	MATERIAL: NOTED
	DRAWN BY: SC		HEAT TREAT: NA
	DATE: 10/7/11		FINISH: 32D
			TITLE: ADA THUMB TURN ASSY INSTRUCTIONS
			PART#: ADA-TTURN

THIS DRAWING AND THE INFORMATION CONTAINED THEREON OR DERIVED THEREFROM ARE THE CONFIDENTIAL PROPERTY OF TOWNSTEEL, INC. IT IS NOT TO BE REPRODUCED, OR DISCLOSED TO OTHERS, AND MAY BE USED ONLY FOR THE PURPOSE OF ENABLING THE PARTY TO WHOM IT HAS BEEN LOANED TO QUOTE ON OR FILL AN ORDER FOR TOWNSTEEL, INC., OR AS MAY BE OTHERWISE AUTHORIZED BY TOWNSTEEL, INC. IN WRITING.