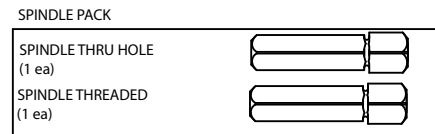
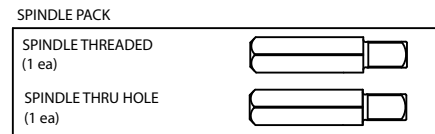
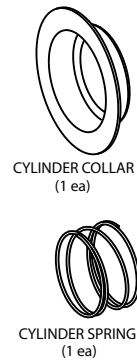
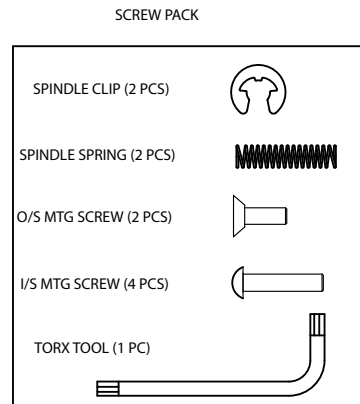
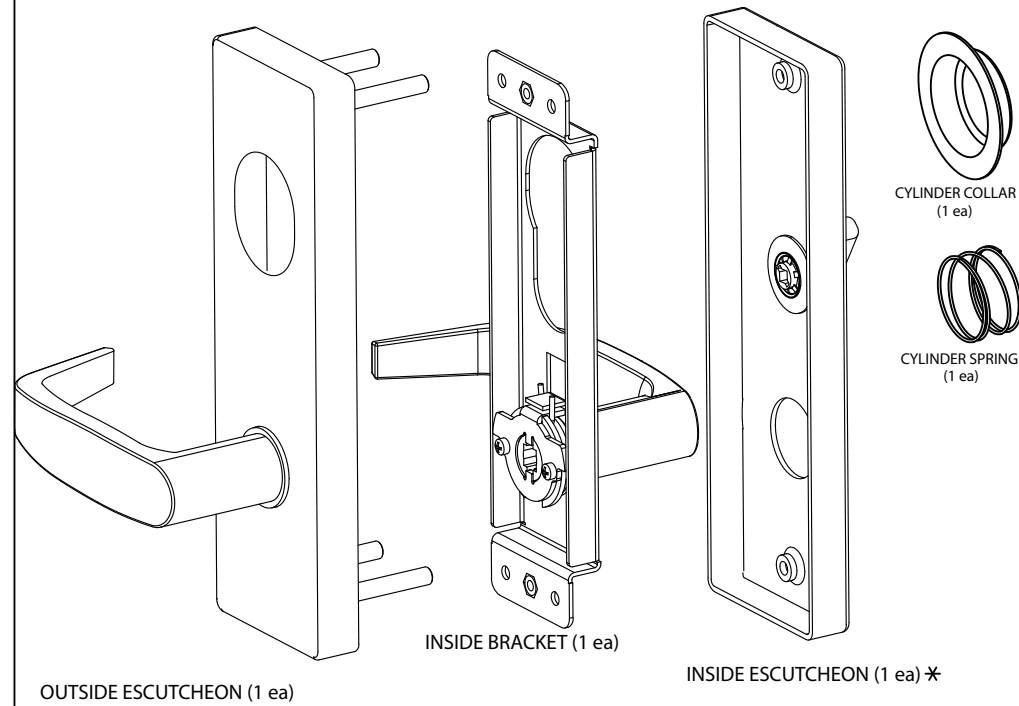
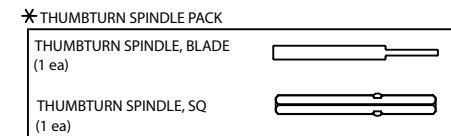


RMU REJUVENATOR™ INSTALLATION GUIDE

RMU REJUVENATOR PARTS LIST

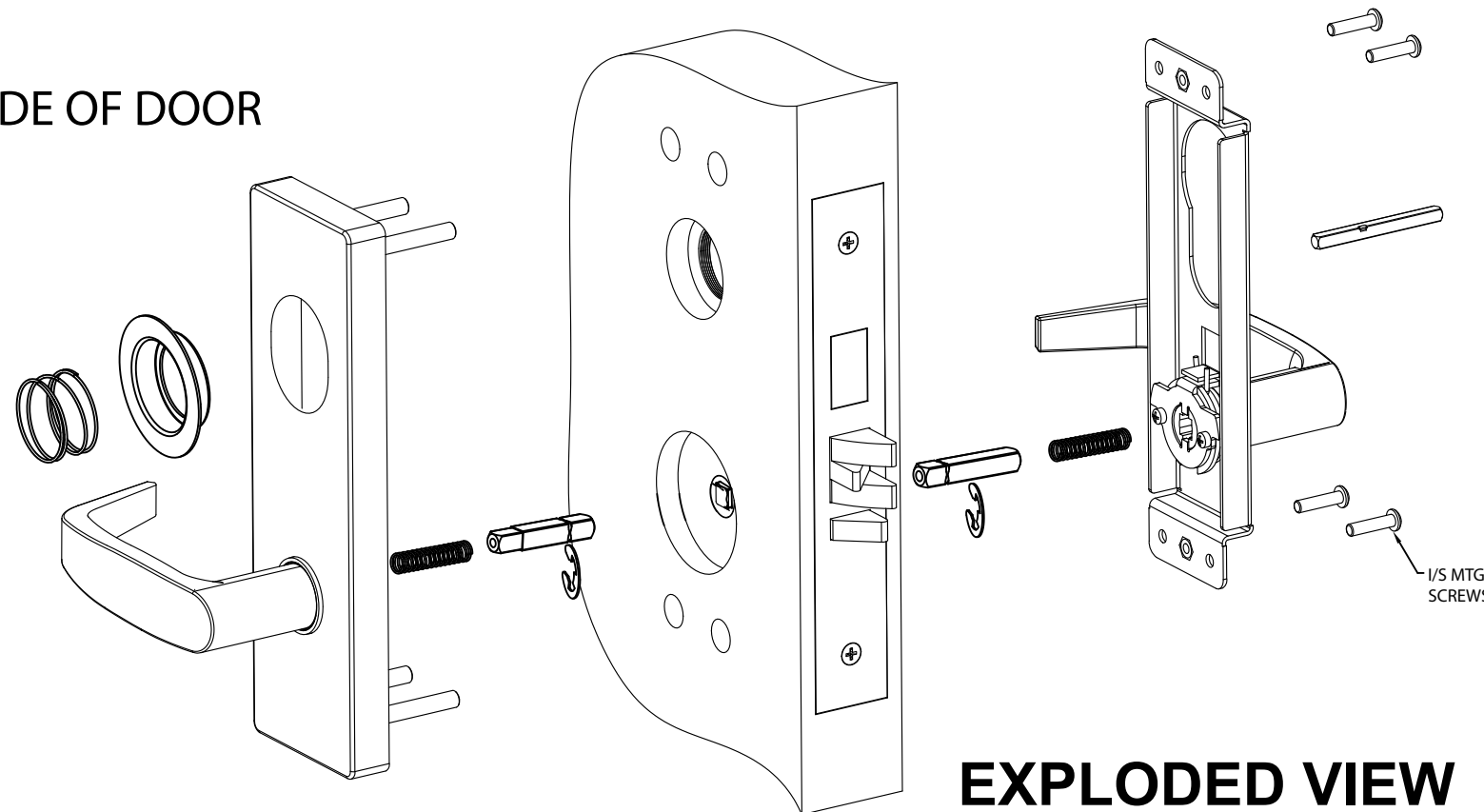


Spindles provided fit most common applications, special spindles may be ordered from the factory. Call TownSteel at 877-858-0888 or contact us through the website site at www.townsteel.com

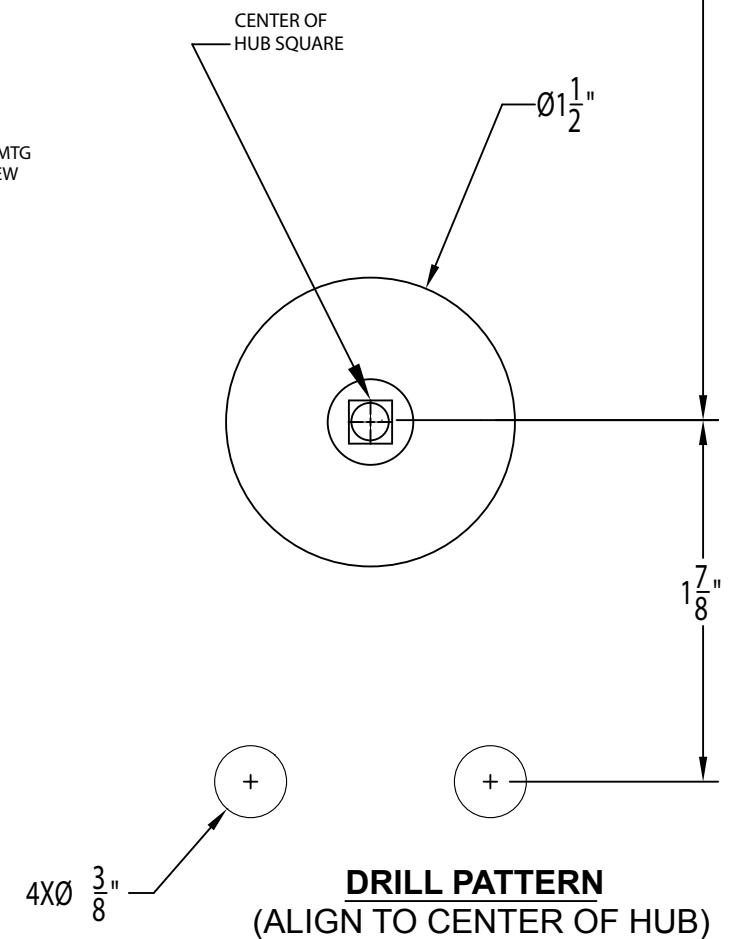
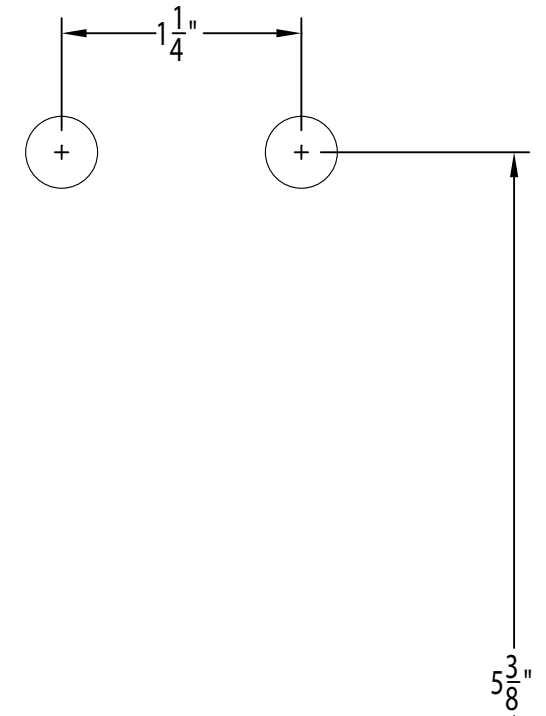


* INSIDE ESCUTCHEON MAY BE WITH OR WITHOUT THUMBTURN AND SPINDLES- AS PER ORDER

OUTSIDE OF DOOR



EXPLODED VIEW



SCALE IS 1:1 IF THIS EQUALS 1"

THE **REJUVENATOR**™
by TownSteel

RMU REJUVENATOR™ INSTALLATION GUIDE

SET THE HANDING OF THE TRIM BEFORE YOU START- SEE FIG 3

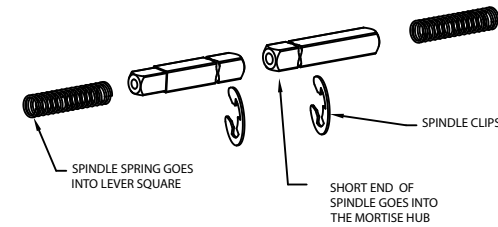
- A. If handing is not correct- remove the 2 Blocker Screws and Outer Blocker. Hold Inner Blocker in place.
- B. Pull out Lever about 1/2" and rotate to the proper handing.
- C. Replace Outer Blocker and secure with the 2 Blocker Screws.
- D. Repeat for inside and outside trim.

RMU INSTALLATION

1. Remove old lever/knob trim from the door.
2. Drill holes per DRILL PATTERN use center of the mortise hub for orientation.
3. Select Spindles required: Extra spindles have been included, select the proper spindle that fits into the mortise hub.
Spindles provided fit most common applications, special spindles may be ordered from the factory. Call TownSteel at 877-858-0888 or contact us through the website site at www.townsteel.com
4. Insert Spindle Springs into the Lever Assemblies (SEE FIG 1).
5. See FIG 1- select required hardware to install Spindles into the mortise hubs.
6. Install Outside Escutcheon on the outside (make sure Spindles engage lever and mortise hub)- see Exploded View.
7. Install Inside Bracket on inside (make sure Spindles engage lever and mortise hub)-see Exploded View.
8. Use the 4 I/S Mounting Screws to secure the Inside Bracket.
9. Place Inside Escutcheon over the Inside Bracket and secure with the 2 O/S Mounting Screws (use Torx Tool). If there is a Thumbturn select the proper Thumbturn Spindle and install before placing the Escutcheon over the Bracket.
10. Screw cylinder into mortise- use Cylinder Collar and Cylinder Spring as shown in FIG 2. Remove mortise faceplate and lock down cylinder. **Check for correct cylinder function before shutting or locking the door.**
11. **Check for correct lock operation before shutting or locking the door.**

FIG 1

SPINDLE INSTALLATION



(PUT SPRING INTO SQUARE HOLE ON LEVER)
SPINDLE SPRING AND END OF SPINDLE TO BE INSERTED INTO THE SQUARE OPENING ON THE LEVER. SHORT END OF THE SPINDLE TO BE INSERTED IN THE SQUARE OPENING (HUB) ON THE MORTISE.

FIG 2

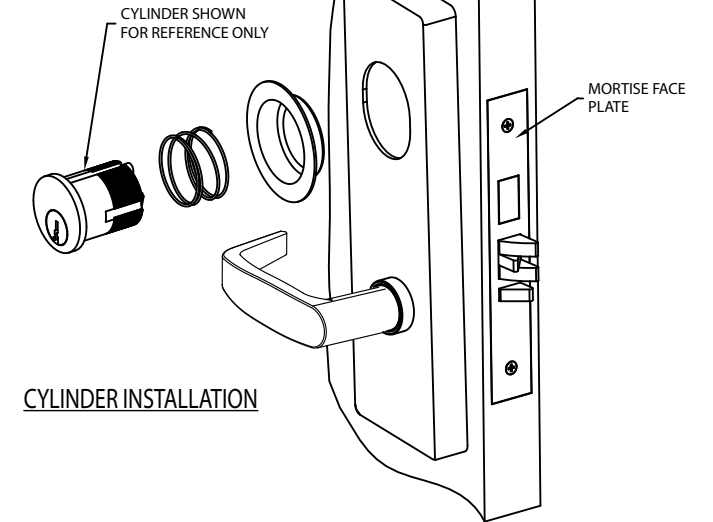


FIG 3

HANDING OF TRIM

